

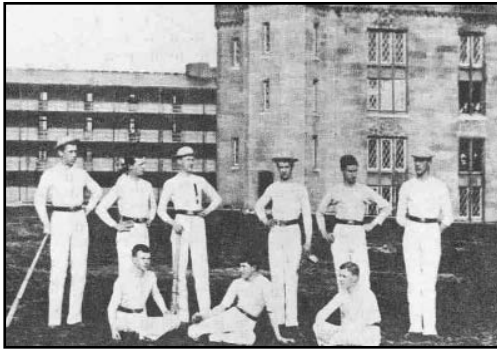
History & Records

Percy Sensabaugh, All Southern Conference 1964, 65

The VMI Baseball Story

As a new day dawns with the opening of Gray-Minor Stadium for the 2007 season, the VMI baseball story continues on in its grand tradition, with a history dating back to the early days of the Institute, over 140 years.

As the Institute continued its rebuilding efforts following its burning in the Summer of 1864, cadets turned to a new sport in the Fall of 1866. An account by Hugh Walker Fry in the 1914 Bomb details the beginnings of the first documented team sport at VMI, introduced by Samuel Taylor:



The 1885 VMI Baseball Team.

I remember that fall that Sam had returned to the Institute from Richmond, where he had been spending his vacation. The day after his arrival he asked me to accompany him to the Parade Ground. Once there he instructed me to stand off from him about fifty feet. I did so. Sam twirled his arm around two or three times and let fly an object at me. Instinctively I was in the act of dodging, but Sam cried, "Catch it, you clohopper!" So I caught it. Not knowing what the missile was, I asked Sam, "What in tarnation is this thing?" Sam replied, "You stupe, it's a baseball." By that time a crowd of cadets gathered around, and we formed a circle. For some time we were carried away with the sport of passing the ball from one to the other.

Sam Taylor had gotten a book of Spalding's Rules, and he had been playing ball in Richmond that summer. Garland Longstreet, another cadet from New Orleans, had played ball that summer too. It was not long before we organized the first baseball team at the Virginia Military Institute. That year we played twenty-three match games: won twenty, lost one, and tied two. (p. 149)

Crosstown rival Washington College (now Washington & Lee University) provided the opponent for several of those first contests, though the team did travel to Lynchburg in 1867 to play the Hill City Club, where they fell by one run. The team's first game against the University of Virginia came in 1889, a rivalry that still continues as the teams are scheduled to play each other twice during the upcoming season.

The schedule became broader as the years went by, as annual games against in-state opponents Randolph-Macon, Hampden-Sydney, Richmond College and VPI became the standard. The rivalry with Washington & Lee was also kept up until the spring of 1904, when an "over-enthusiastic response of spectators" caused the two schools to cease athletic relations.

In the early 1900's, three players stood out on the diamond so much so that they were inducted into the VMI Sports Hall of Fame some 60-plus years later. William Couper '04 holds the distinction as being both the earliest Baseball Hall of Famer, as he was also the first recipient of a VMI monogram. A first baseman and captain of the '04 team, Couper was inducted as part of the inaugural class of 1972, along with four other baseball players. Robert Y. Conrad '05 earned induction in 1974, as his play in right field and as a right tackle on the football team, earned him the honor, though it was awarded posthumously, as he was killed in combat during the Battle of the Marne in World War I. John L. Pitts '16 was an outstanding pitcher who received the Williamson Graham Cup for overall athletic excellence and was inducted into the VMI Sports HOF in 1975.



Frank M. Page, Jr. '23 hurled two no-hitters in 1922, including one against South Carolina in the first baseball game ever played at Alumni Field.

Until the 1921-22 season, the squad played home games on the Parade Ground, just as the football team did. In that season, both teams relocated to Alumni Field, a site which the football team still uses today, while the baseball team shifted operations to Patchin Field in the early 1960's.

In that historic first game at Alumni Field in April of 1922, the Keydets hosted the University of South Carolina. VMI Hall of Fame inductee Frank M. Page, Jr. '23 had a day to remember, as he hurled the first of his two no-hitters that year. In the game, shortstop Joseph M. Hatchett hit a majestic home run to centerfield on the first pitch thrown to a VMI batter at the field. Later in the inning, Edward Ryder hit another long round-tripper to the same spot, helping Page earn the 8-0 victory, the first of six consecutive wins for Page as he wound up the season with an 8-2 mark. Included in that total were a pair of two-hitters, a one-hitter, and another no-hitter, this time against VPI in the final home game of the season. Those

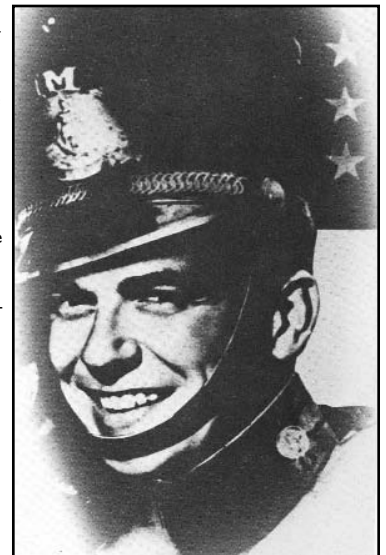
outings accompanied a 16-strikeout performance in a 4-2 win against Roanoke College, which still didn't match an 18-strikeout game he posted in 1920.

The team went 11-2 in that season, and followed that up by going 13-4 in 1923, including two shutouts of Virginia by Page. Those teams have been regarded by some to be among the greatest in VMI history.

At the turn of the decade, two more future VMI Hall of Famers donned the Red, White and Yellow in the persons of Gilly Laughorn '31 and Lefty Williams '31. Laughorn was a slugger who led the team in home runs and earned honorable mention All-American status as a first classman, while Williams was regarded as a standout pitcher who posted two-hitters of both Cornell and VPI as a third classman. Both players were offered contracts from major league clubs, as Laughorn went on to play for three seasons in the Chicago White Sox organization. Laughorn and Williams led the teams to solid campaigns of 10-6 (1929), 11-4 (1930), and 12-6 (1931).

1938 would become a season long remembered in VMI baseball lore. The team posted seven wins, a five-win improvement from the year before, and was regarded as one of the program's finest sides with some outstanding individual talent. Charles "Billy" Robertson '38 was a noteworthy hurler who averaged over ten strikeouts per contest, while his catcher was the incomparable Paul Shu. Shu earned All-State and All-Conference recognition in football, led the basketball team in scoring, won the state javelin title in addition to his exploits on the diamond. But it was an event away from the field that brought the program a great deal of attention, though perhaps indirectly. In 1938, the movie *Brother Rat* was released, with future President Ronald Reagan playing Dan Crawford and Eddie Albert portraying Bing Edwards, a pair of VMI baseball players who bend the rules just weeks before graduation and must scramble to stay in school and secure their degree. It is this picture that many casual acquaintances of VMI have when referencing the Keydet baseball program.

As the Institute resumed its normal operations following World War II, a pair of players stood out for their performances on the field in Claude "Red" Patton '50 and Oliver "Red" Williford '51. Patton, who was inducted into the HOF in 1975, was a unanimous All-State selection in 1950, while Williford was named All-State in four consecutive seasons, while he also won the Cincinnati Medal and the Silver Star for gallantry in action during his distinguished military career.



Ronald Reagan in his role as a cadet in the 1938 movie *Brother Rat*. (Courtesy Warner Brothers)

In the mid 1950's, the team turned in three consecutive 12-win seasons, marking the program's best run until Charlie McGinnis' days at the helm of the program in the early 1960's. After going just 15-14 in his first two seasons on post, McGinnis' nine accrued 40 wins over the next three seasons (1963-65), including a 15-9 mark in 1965 that stood as the program's last winning season until the 2006 campaign, when Marlin Ikenberry's troops posted a 30-25 record.

When putting together any list of the top pitchers in the program's history, certainly near the top along with Page, Williams, & Robertson would have to be the name of Percy Sensabaugh '64. As a third classman, Sensabaugh ranked second in the country with 106 strikeouts, a record that still stands as the program's top mark. That, along with his 0.67 ERA, may represent the finest statistical season on record, though his second class year (1.04 ERA, 71 K, 69 IP, 5 CG) certainly ranks a close second. Twice during the 1964 campaign, Sensabaugh struck out at least 20 batters, doing so against West Virginia on April 11 before sitting down 21 in an 11-inning contest against The Citadel later that year. However, his playing career was cut tragically short due to an arm injury sustained while throwing the shot put, dashing any hopes of a professional career.

However, Sensabaugh was not the only star player of those mid-1960's teams. The 1963 team saw a pair of newcomers that went on to earn All-American status, as Joe Bush and Donnie White each helped the team to new batting average and stolen-base records. Bush, who later earned induction into the HOF on his football credentials, was a centerfielder with a stick for that team, while White, a sure-handed shortstop with wheels, earned induction in 1975. White, also an accomplished football halfback, led the team in hitting for three consecutive seasons, including a high of .391 as a third classman, while his 26 stolen bases in 1963 was the second-highest mark in the nation that season. White's relationship with the baseball program has now spanned into its fifth decade, as he has served as player, assistant coach, head coach, and now as the Institute's athletic director.

Just four years later, the team would go on an unlikely run under the direction of Chuck Roys. After finishing the regular season with a 7-7 mark, the 1969 Keydets, under the direction of Chuck Roys, forced a one-game playoff against William & Mary to determine the Southern Conference's Norther Division Champions. Despite falling in three of their previous

four meetings with the Tribe that year, the Keydets claimed a thrilling 13-inning decision that lasted deep into the Colonial Heights night to defeat W&M 5-3 and earn a spot in the SoCon Championship Series against Furman the next day. But there was no magic left in the Keydet bats, as the team fell 7-2 and 5-4 to the Paladins, leaving their first SoCon Championship appearance empty-handed. That team was led by a standout fourth classman pitcher by the name of Vern Beitzel, who later went on to serve as head coach for four seasons. He was joined by J.C. Hanks and Timothy White, each of whom helped shoulder the offensive load. In fact, White hit over .330 for three consecutive years, while helping to almost single-handedly end VPI's 19-year winning streak over the Keydets in VMI's come-from-behind, 8-6 victory.

The coming seasons would be a struggle for the program, as they failed to win more than six games in a season until the 1982 team, when first-year head man Donnie White claimed Southern Conference Coach of the Year honors for engineering a dramatic turnaround. Under his direction, the team steadily improved its win totals in the SoCon over the next six seasons while players like Phil Hubbard '83, Greg Weddle '86 and Criss Finwood '88 each became standouts who would later earn induction into the HOF. Hubbard, who batted .424 as a junior, still ranks as one of the top sluggers in VMI history, as his .350 career batting average is the third-highest total of all time. Meanwhile, Weddle's exploits at the plate still have him as the career leader in slugging percentage (.633) and home runs (37), while his .328 batting average and 146 RBI also rank in the top five.

During those seasons, the team posted back-to-back .500 seasons for the first time since the 1962 & 1963 campaigns. In 1987, White led the Keydets to a 16-16-1 record, and more importantly, an 8-4 SoCon mark. The team finished second in the North Division that season, earning a berth into the Conference Tournament. There, after dropping their opening game to Western Carolina, the Keydets slugged their way to back-to-back wins against Davidson and Appalachian State, though they needed extra innings to dispatch the Mountaineers. The Keydets then faced off against Western Carolina in the Championship Finals, where they fell 9-4. That run saw the end of White's VMI coaching career, as Paul Maini took over the reins and saw great success his first year, leading the team to a 20-20 mark, while Maini earned SoCon Coach of the Year honors that season.

Finwood, as so many of the program's fine players have done, would return to Lexington to head up the program just a few short years after his playing days had wrapped up. During those playing days, Finwood had helped lead VMI to a pair of Northern Division Championships (1987, 1988), while he was voted All-Southern Conference three times in his career. Just three years after his graduation, Finwood took over the program after a disastrous 2-35-1 campaign, and immediately began to right the ship. In his three years, Finwood won 52 games, the fifth-most in school history, while his eighth-seeded 1993 team went on one of the most magical rides in VMI athletic history, defeating three consecutive favored opponents to advance to the SoCon Tournament Finals, where they eventually fell to second-seeded Western Carolina.

That '93 team also featured several individuals that would continue the VMI baseball legacy over the following years. Along with Finwood, the team also included assistant coach Tom Slater '90, who would serve for three seasons as VMI's head coach, engineering a 16-14 record in the Southern Conference in 2003, before eventually moving on to take over as the head coach at Auburn prior to the 2005 season. Playing on that team were a pair of catchers that would go on to serve as assistant coaches for the Keydets in Chris Chernisky '94 and Marlin Ikenberry '95. Chernisky took over the Niagara program prior to the 2005 season, while Ikenberry is in his fourth season at the helm of the Keydet program.



The 1993 VMI baseball team marched through the Southern Conference Tournament all the way to the Finals before falling to Western Carolina.

First-Year Player Draft by the Texas Rangers, the highest selection of any Keydet in the program's history. And after four-plus seasons playing in the Rangers' minor league system, Glynn made his major league debut on May 16, 1999 against the Baltimore Orioles. Just over a week later, Glynn started his first major league contest, doing so in Tampa Bay on May 25, 1999. In that game, Glynn pitched 4.1 innings in a Rangers' 7-2 victory. In all, Glynn pitched in the majors in five different seasons, winning nine contests and striking out 116 batters, while he earned VMI Sports HOF induction in 2005, the most recent baseball inductee.

Glynn's final season playing for the Keydets marked the first campaign for one of VMI's most

successful coaches, Scott Gines '83. Gines owns the second-longest tenure of any VMI head baseball coach, as he collected 104 wins over six seasons. He still remains the program's all-time leader in coaching victories, as he twice saw his team qualify for the SoCon Tournament.

Gines' final season came in 1999, when the team posted a new school-record win total with a 22-27 campaign during which they also went 13-16 in the League. However, an 0-2 finish in the SoCon tournament dashed the dreams of yet another miracle tournament run.



Ryan Glynn '96 is the only Keydet to ever play in the major leagues, doing so for the Texas Rangers, Toronto Blue Jays and the Oakland Athletics.

The 2000 season would see one of the greatest offensive statistical seasons in the program's history, as Chris Catanzaro '01 hit .392, doing so with 76 hits, 24 of which were doubles, along with 56 runs and 46 RBI. Those numbers helped him to claim the career records which still stand today of a .356 batting average, 71 doubles and 155 RBI, while his second-place totals of 258 hits and 410 total bases were only eclipsed in 2006 by the culmination of the stellar career of Kelly Sweppenhiser '06.

Taking over in 2001 was Slater, who returned once again to the VMI program after serving for six seasons as an assistant coach at Auburn. While serving under legendary AU baseball coach Hal Baird, Slater recruited several future major leagues, including Tim Hudson, Chris Bootcheck and Gabe Gross. Despite only winning 25 games in his first two seasons at the helm, Slater laid the groundwork for some of the finest seasons in VMI baseball history in the coming years.

It got started in 2003, when Slater's bunch went 25-27, setting yet another new record for wins in a season, while his 16-14 SoCon mark earned him Coach of the Year honors from the League. It didn't hurt that the seventh-seeded team also won a pair of games in the SoCon tournament, defeating both third-seeded Citadel and fifth-seeded Furman by 2-1 scores before being ousted by fourth-seeded UNC Greensboro. The loss was a bittersweet ending to the 75-year relationship between VMI and the Southern Conference, as the Institute joined the Big South Conference in the Fall of 2003.

And with the new Conference affiliation came a new coach. Ikenberry took the reins after serving for three seasons as an assistant under Slater. After a disappointing 2004 season that saw the team go 23-32 in its inaugural Big South campaign, Ikenberry's boys made sure the rest of the league knew the Keydets were a force to be reckoned with in 2005, posting 27 wins and an 11-13 conference record, earning their first berth into the Big South Championship.

For the fourth time in five seasons, the 2006 squad again surpassed the school record for wins in a season. But the team's 30 wins was only half the story, as the team lost only 25 contests, marking the program's first winning season since McGinnis' 1965 team. The team also scored a pair of historic firsts, including a series win at Auburn to open up the season, the first time the Keydets had ever claimed a series victory against an SEC team. Then on the season's final weekend, VMI took two of three against #16 Winthrop, marking the first series win against a ranked team in program history.

That spring, the team bid farewell to undoubtedly one of the top bats to ever don red, white and yellow, as Kelly Sweppenhiser was drafted by the Toronto Blue Jays, and, later that summer, became only the second Keydet to reach AAA, doing so with the Syracuse SkyChiefs in September 2006. Sweppenhiser graduated with numerous records and honors, as his 263 hits, 172 runs, 411 total bases, .457 on-base percentage helped him to become the VMI's first Louisville Slugger Freshman All-American and Lone Dick Howser Award Watch Listee.

While the past has been impressive of the VMI baseball program, the future looks even brighter. Gray-Minor Stadium opens this February, named after a pair of former VMI catchers in Sen. Elmon Gray '46 and Gil Minor '63, and will feature seating for 1,400 fans, new dugouts, fencing and covered batting cages, a restrooms and concessions plaza, a state-of-the-art press box, as well as the ability to host the program's first night games, scheduled for March 27, 2007. On that night, Gray-Minor Stadium will be dedicated as the VCU Rams come to town for a 7 p.m. start. The facility will give the program one of the premier facilities in the state of Virginia, and will help to enhance the ability to both recruit top-notch athletes and practice throughout the year, while also bringing in some of the region's top teams for games against the Keydets.

As the program embarks on its next era, the VMI baseball story continues what has already been a dynamic journey.

-Adapted from Col. Tom Davis' outstanding work in *The Corps Roots the Loudest*. A sincere thank you goes out to Col. Davis for his countless hours of research and study to provide such a detailed and accurate study of VMI Athletics history.

Record Versus Opponents

Opponent	Record	Last Win	Last Meeting	Streak
Air Force	5-5	2/10/01 (7-2)	2/11/01 (L, 1-6)	L1
Akron	1-3	1956 (8-7)	3/9/97 (L, 3-12)	L3
Alabama-Birmingham	0-2	-----	2/16/97 (L, 3-16)	L2
Albany	2-1	3/4/06 (8-3)	3/5/06 (L, 13-14)	L1
Appalachian State	30-66	5/4/03 (11-1)	5/4/03 (W, 11-1)	W3
Armstrong Atlantic	1-1	3/14/84 (2-0)	3/14/84 (L, 3-11)	L1
Army	2-0	3/3/02 (4-2)	3/3/02 (W, 4-2)	W2
Auburn	2-11	2/5/06 (10-8)	2/5/06 (W, 10-8)	W2
Bethany	1-0	1972 (2-0)	1972 (W, 2-0)	W1
Binghamton	2-1	3/14/04 (6-2)	3/14/04 (W, 6-2)	W2
Birmingham-Southern	1-8	4/22/06 (13-1)	4/24/06 (L, 3-7)	L2
Bluefield	3-0	4/17/96 (6-5)	4/17/96 (W, 6-5)	W3
Bridgewater	3-5	4/28/82 (12-7)	3/11/93 (L, 3-5)	L5
Brown	10-7	3/27/06 (7-6)	3/27/06 (W, 7-6)	W3
Bucknell	12-9	2/18/01 (10-9)	2/18/01 (10-9)	W1
C.W. Post	0-1	-----	3/12/92 (L, 4-12)	L1
California (Pa.)	2-0	3/10/84 (8-0)	3/18/84 (W, 8-0)	W2
Camp Lejeune Marines	0-2	-----	1951 (L, 1-11)	L2
Campbell	0-1	-----	3/14/96 (L, 3-6)	L1
Castleton State	2-0	1965 (4-0)	1965 (W, 4-0)	W1
Central Michigan	0-2	-----	3/15/85 (L, 10-15)	L2
College of Charleston	6-10	5/12/03 (5-3)	5/12/03 (W, 5-3)	W2
Charleston Southern	4-5	3/19/06 (10-7)	3/19/06 (W, 10-7)	W1
Cherry Point Marines	0-1	-----	1951 (L, 3-9)	L1
The Citadel	23-75	5/22/03 (2-1)	5/22/03 (W, 2-1)	W1
Clarkson	1-0	3/29/89 (9-3)	3/29/89 (W, 9-3)	W1
Coastal Carolina	3-6	5/6/06 (8-2)	5/8/06 (L, 0-2)	L2
Colby	2-0	1965 (6-2)	1965 (W, 6-2)	W2
Colgate	1-0	1961 (6-4)	1961 (6-4)	W1
Columbus State	0-3	-----	3/13/90 (L, 4-9)	L3
Connecticut	0-2	-----	3/13/76 (L, 1-6)	L2
Coppin State	13-0	2/19/06 (10-8)	2/19/06 (W, 10-8)	W2
Cornell	1-2	3/27/57 (5-3)	3/28/57 (L, 1-9)	L1
Davidson	38-43	3/9/03 (9-7)	3/9/03 (W, 9-7)	W3
Davis & Elkins	1-3	3/11/94 (4-0)	3/11/94 (W, 4-0)	W1
Duke	2-6	2/14/94 (2-1)	3/1/98 (L, 2-14)	L2
East Carolina	1-23	1969 (8-6)	4/16/81 (L, 3-6)	L17
East Tennessee State	39-44	3/15/03 (3-1)	3/16/03 (L, 0-7)	L1
Elizabethtown	0-1	-----	3/9/96 (L, 0-1)	L1
Elon	0-1	-----	3/11/03 (L, 4-5)	L1
Emory & Henry	1-0	1968 (9-2)	1968 (W, 9-2)	W1
Fairfield	1-0	3/7/05 (20-2)	3/7/05 (W, 20-2)	W1
Ferrum	1-2	3/18/86 (8-5)	4/20/89 (L, 0-9)	L2
Flagler	0-2	-----	3/13/82 (L, 1-2)	L2
Florida State	0-14	-----	2/6/05 (L, 0-15)	L14
Florida Tech	0-6-1	-----	3/13/87 (L, 6-7)	L3
Furman	25-56	5/23/03 (2-1)	5/23/03 (W, 2-1)	W3
George Mason	3-9	3/3/90 (10-2)	2/26/02 (L, 4-10)	L6
George Washington	16-25	3/17/98 (9-3)	3/18/98 (L, 4-8)	L1
Georgetown	3-0	5/17/05 (16-7)	5/17/05 (W, 16-7)	W3
Georgia	0-2	-----	1964 (L, 5-11)	L2
Georgia Southern	8-33	3/5/00 (7-5)	5/21/03 (L, 4-6)	L10
Hampden-Sydney	2-6	1956 (16-13)	1959 (L, 4-14)	L3
Hartford	4-2	3/12/06 (7-4)	3/12/06 (W, 7-4)	W1
High Point	5-4	4/9/06 (9-2)	4/9/06 (W, 9-2)	W1
Hofstra	1-2	2/12/05 (9-8)	2/13/05 (L, 4-21)	L2
Holy Cross	1-1	3/5/92 (21-0)	3/5/92 (21-0)	W1
Howard	9-1	2/24/02 (17-0)	2/24/02 (W, 17-0)	W5
Ithaca	0-1	-----	1953 (L, 5-6)	L1
IUPUI	1-1	3/20/99 (14-3)	3/20/99 (W, 14-3)	W1
Jacksonville	0-1	-----	3/10/82 (L, 2-9)	L1
James Madison	5-40	4/6/89 (8-7)	5/17/06 (L, 1-2)	L12
Juniata	2-0	3/10/95 (15-1)	3/10/95 (W, 15-1)	W2
Lafayette	9-2	2/26/06 (8-7)	2/26/06 (W, 8-7)	W6
Lehigh	0-1	-----	3/15/84 (L, 5-13)	L1
LeMoyne	1-0	3/27/97 (16-10)	3/27/97 (W, 16-10)	W1
Liberty	7-22	5/1/06 (11-9)	4/2/06 (L, 7-9)	L3
Lock Haven	4-1	3/25/86 (6-4)	3/25/86 (W, 6-4)	W4
Long Island	1-3	1953 (8-7)	1971 (L, 5-70)	L2
Longwood	7-4	3/8/06 (10-3)	3/8/06 (W, 10-3)	W5
Lynchburg	10-7	4/20/87 (25-9)	4/20/88 (L, 3-11)	L1
Maine	0-3	-----	3/10/88 (L, 1-6)	L3
Marietta	3-0	1965 (6-5)	1965 (W, 6-5)	W1
Marist	1-0	3/18/03 (8-4)	3/18/03 (W, 8-4)	W1
Marshall	33-42	4/25/00 (4-3)	4/26/00 (L, 12-13)	L1
Mary Washington	3-1	2/29/92 (11-6)	3/31/93 (L, 1-5)	L1
Maryland	0-5	-----	4/22/54 (7-13)	L5

Opponent	Record	Last Win	Last Meeting	Streak
Maryland-Baltimore County	1-0	3/26/98 (15-5)	3/26/98 (W, 15-5)	W1
Massachusetts	0-1	-----	3/17/80 (L, 1-15)	L1
Massachusetts-Dartmouth	1-2	3/21/76 (3-2)	3/21/76 (W, 3-2)	W1
Mercer	3-3-1	2/12/06 (5-4)	2/12/06 (W, 5-4)	W1
Mercyhurst	1-0	3/30/83 (11-5)	3/30/83 (W, 11-5)	W1
Michigan	0-1	-----	1951 (L, 3-22)	L1
Michigan State	0-1	-----	1956 (L, 3-6)	L1
Mount St. Mary's	5-0	3/7/99 (6-3)	3/7/99 (W, 6-3)	W5
Navy	2-1	3/6/05 (18-5)	3/16/05 (W, 18-5)	W2
Niagara	1-0	3/15/06 (7-3)	3/15/06 (W, 7-3)	W1
Norfolk State	9-0	3/22/06 (3-2)	3/22/06 (W, 3-2)	W9
North Carolina A&T	4-1	5/13/06 (5-0)	5/13/06 (W, 5-0)	W2
North Carolina State	0-3	-----	3/12/03 (L, 4-9)	L3
North Carolina Wesleyan	1-1	3/22/78 (17-13)	4/15/81 (L, 1-16)	L1
Oglethorpe	1-0	1963 (4-1)	1963 (W, 4-1)	W1
Ohio	0-1	-----	3/24/98 (L, 1-5)	L1
Old Dominion	7-29	4/10/79 (5-4)	5/11/05 (L, 2-9)	L19
Oneonta State	4-1	4/5/90 (7-5)	4/5/90 (W, 7-5)	W4
Pittsburgh	1-1	4/13/57 (11-9)	4/13/57 (W, 11-9)	W1
Presbyterian	4-1	1964 (19-4)	1964 (W, 19-4)	W3
Princeton	0-2	-----	1965 (3-6)	L2
Quantico Marines	1-2	1958 (8-4)	1958 (W, 8-4)	W1
Radford	12-13-1	4/15/06 (11-4)	4/15/06 (L, 7-12)	L1
Randolph-Macon	0-1	-----	5/10/57 (3-7)	L1
Rhode Island	1-0	1964 (3-2)	1964 (W, 3-2)	W1
Richmond	21-73	4/14/06 (15-9)	4/14/06 (W, 15-9)	W4
Roanoke	1-1	1951 (6-1)	1951 (W, 6-1)	W1
Rollins	4-7	3/12/88 (5-1)	3/12/88 (W, 5-1)	W2
Sacred Heart	1-0	3/12/86 (9-2)	3/12/86 (W, 9-2)	W1
St. Andrews	3-0	1965 (3-2)	1965 (W, 3-2)	W3
St. Francis (N.Y.)	1-0	1971 (7-5)	1971 (W, 7-5)	W1
Saint Rose	1-0	3/7/96 (12-4)	3/7/96 (W, 12-4)	W1
Salem	2-0	1955 (6-3)	1955 (W, 6-3)	W2
Samford	1-6	2/9/03 (4-3)	2/9/03 (W, 4-3)	W1
Shenandoah	4-0	2/24/93 (11-1)	2/24/93 (W, 11-1)	W4
South Carolina	0-5	-----	3/4/98 (L, 5-8)	L5
Southern Connecticut St.	0-2	-----	1972 (L, 6-15)	L2
Stetson	1-2	2/15/04 (19-13)	2/15/04 (L, 7-8)	L1
Tennessee	0-1	-----	2/12/95 (L, 4-11)	L1
Tennessee-Chattanooga	0-8	-----	4/4/82 (L, 4-5)	L8
Troy	2-4	2/8/97 (4-3)	2/15/98 (L, 6-18)	L4
Tulane	0-2	-----	3/14/85 (L, 3-9)	L2
UNC Asheville	3-6	3/19/05 (8-7)	4/30/06 (L, 5-6)	L4
UNC Greensboro	7-18	4/6/03 (7-5)	5/24/03 (L, 1-10)	L1
Utica	1-0	3/19/89 (7-6)	3/19/89 (W, 7-6)	W1
Vanderbilt	0-3	-----	2/19/05 (L, 2-5)	L3
Villanova	1-0	3/10/88 (16-4)	3/10/88 (W, 16-4)	W1
Virginia	14-48	4/13/95 (6-4)	4/18/06 (L, 0-5)	L5
Virginia Commonwealth	6-24	3/26/85 (6-4)	5/10/06 (L, 6-8)	L16
Virginia Tech	14-64	4/27/05 (6-2)	4/5/06 (L, 8-9)	L1
Virginia Wesleyan	1-1	3/11/92 (13-4)	3/14/94 (L, 4-14)	L1
Wake Forest	0-7	-----	3/17/94 (L, 8-9)	L7
Washington (Md.)	1-0	4/3/54 (25-5)	4/3/54 (W, 25-5)	W1
Washington & Lee	24-4	4/25/95 (6-1)	4/25/95 (W, 6-1)	W12
West Chester	3-2	3/25/95 (9-3)	3/25/95 (W, 9-3)	W1
West Georgia	1-2	1963 (4-3)	3/14/90 (2-13)	L2
West Virginia	6-23	1960 (6-3)	1968 (2-3)	L13
West Virginia Tech	1-0	1955 (14-13)	1955 (W, 14-13)	W1
Western Carolina	15-55	5/5/02 (7-4)	4/20/03 (L, 9-14)	L3
William & Mary	42-58	4/5/05 (8-6)	4/20/05 (L, 6-12)	L1
Winthrop	3-7	5/21/06 (7-3)	5/21/06 (7-3)	W2
Wofford	8-9	4/27/03 (10-0)	4/27/03 (W, 10-0)	W1
Yale	0-2	-----	3/12/83 (9-10)	L2
Youngstown State	1-2	3/18/96 (7-6)	3/18/96 (W, 7-6)	W1

Series vs. Opponents includes all results from 1951-2006.

Bold Italic - 2007 Opponent

The Keydets have never played Florida, Maryland-Eastern Shore, Rider & Savannah State.

Keydets' Most Common Opponent: William & Mary, 100 meetings

Most Keydet Wins vs. Opponent: 42, William & Mary

Most Keydet Losses vs. Opponent: 75, The Citadel

Longest Current Win Streak vs. Opponent: 13, Coppin State

Longest Current Losing Streak vs. Opponent: 19, Old Dominion

Longest Current Annual Meeting: Richmond (4-8), Eight seasons

Auburn (2-11)

3/15/90	Auburn, Ala.	L, 1-11
2/17/96	Auburn, Ala.	L, 0-14
2/17/96	Auburn, Ala.	L, 0-6
2/18/96	Auburn, Ala.	L, 3-14
4/8/97	Auburn, Ala.	L, 2-14
4/9/97	Auburn, Ala.	L, 3-17
4/7/98	Auburn, Ala.	L, 7-19
3/11/05	Auburn, Ala.	L, 4-5
3/12/05	Auburn, Ala.	L, 0-12
3/13/05	Auburn, Ala.	L, 3-4
2/3/06	Auburn, Ala.	L, 0-7
2/4/06	Auburn, Ala.	W, 8-5
2/5/06	Auburn, Ala.	W, 10-8

Bucknell (12-9)

1964	Unknown	W, 4-0
1964	Unknown	W, 3-1
1970	Unknown	W, 4-3
3/30/88	Lexington, Va.	W, 6-4
3/27/89	Lexington, Va.	W, 3-2
3/22/90	Lexington, Va.	W, 8-7
3/1/91	Lexington, Va.	L, 8-12 (8)
2/28/92	Lexington, Va.	L, 4-15
3/5/93	Lexington, Va.	W, 5-4
2/24/95	Lexington, Va.	W, 8-7
2/21/98	Lexington, Va.	L, 4-15
2/21/98	Lexington, Va.	W, 9-8
2/22/98	Lexington, Va.	L, 2-3
5/11/99	Lewisburg, Pa.	L, 3-4
5/12/99	Lewisburg, Pa.	L, 3-5
5/12/99	Lewisburg, Pa.	W, 6-1
4/4/00	Lewisburg, Pa.	L, 3-11
4/5/00	Lewisburg, Pa.	W, 8-4
2/17/01	Lexington, Va.	L, 10-13
2/01	Lexington, Va.	L, 6-9
2/18/01	Lexington, Va.	W, 10-9

Charleston Southern (4-5)

4/30/04	Lexington, Va.	L, 1-4
5/1/04	Lexington, Va.	L, 6-7
5/2/04	Lexington, Va.	L, 6-7
4/15/05	Charleston, S.C.	W, 4-1
4/16/05	Charleston, S.C.	W, 7-2
4/16/05	Charleston, S.C.	L, 0-2
3/17/06	Lexington, Va.	W, 16-1
3/18/06	Lexington, Va.	L, 2-3 (10)
3/19/06	Lexington, Va.	W, 10-7

Coastal Carolina (3-6)

4/9/04	Lexington, Va.	L, 5-8
4/10/04	Lexington, Va.	L, 7-9
4/10/04	Lexington, Va.	W, 4-3
3/25/05	Conway, S.C.	L, 3-4
3/26/05	Conway, S.C.	W, 3-2
3/26/05	Conway, S.C.	L, 1-3
5/6/06	Lexington, Va.	W, 8-2
5/8/06	Lexington, Va.	L, 4-6 (10)
5/8/06	Lexington, Va.	L, 0-2

Coppin State (13-0)

2/15/02	Lexington, Va.	W, 10-0
2/16/02	Lexington, Va.	W, 6-2
4/2/02	Baltimore, Md.	W, 28-0
4/12/03	Lexington, Va.	W, 16-6
4/12/03	Lexington, Va.	W, 15-8
2/20/04	Lexington, Va.	W, 17-2
2/21/04	Lexington, Va.	W, 15-5
2/22/04	Lexington, Va.	W, 16-3
2/26/05	Lexington, Va.	W, 7-6
2/26/05	Lexington, Va.	W, 5-4
2/27/05	Lexington, Va.	W, 16-6
2/17/06	Lexington, Va.	W, 21-4
2/19/06	Lexington, Va.	W, 10-8

High Point (5-4)

5/8/04	High Point, N.C.	L, 4-14
5/9/04	High Point, N.C.	L, 2-11
5/10/04	High Point, N.C.	W, 10-2
5/13/05	Lexington, Va.	W, 10-7
5/14/05	Lexington, Va.	W, 9-2
5/15/05	Lexington, Va.	W, 5-4
4/7/06	High Point, N.C.	L, 1-5
4/8/06	High Point, N.C.	L, 5-6
4/9/06	High Point, N.C.	W, 9-2

Liberty (7-22)

4/30/76	Lexington, Va.	L, 6-15
4/9/77	Lexington, Va.	W, 8-7
4/9/77	Lexington, Va.	W, 12-1
5/1/78	Lynchburg, Va.	L, 1-5
5/1/78	Lynchburg, Va.	L, 5-10
5/1/79	Lexington, Va.	L, 0-9
3/10/89	Lynchburg, Va.	W, 5-3
4/10/89	Lynchburg, Va.	L, 5-6
4/17/90	Lynchburg, Va.	L, 8-12
4/4/91	Lynchburg, Va.	L, 2-8
4/11/91	Lexington, Va.	L, 4-14
3/24/92	Lynchburg, Va.	L, 11-12 (10)
3/31/92	Lexington, Va.	W, 7-6 (10)
4/4/94	Lexington, Va.	L, 7-13
4/21/94	Lynchburg, Va.	L, 2-9
3/28/95	Lynchburg, Va.	W, 8-6
2/27/97	Lexington, Va.	W, 9-4
2/24/98	Lynchburg, Va.	L, 14-15
3/6/00	Lynchburg, Va.	L, 2-9
5/2/00	Lexington, Va.	L, 7-15
5/22/04	Lynchburg, Va.	L, 4-8
5/22/04	Lynchburg, Va.	L, 4-10
5/23/04	Lynchburg, Va.	L, 6-7
4/30/05	Lexington, Va.	L, 5-9
5/1/05	Lexington, Va.	L, 3-12
5/1/05	Lexington, Va.	W, 11-9
3/31/06	Lynchburg, Va.	L, 5-8
4/1/06	Lynchburg, Va.	L, 8-16
4/2/06	Lynchburg, Va.	L, 7-9

Niagara (1-0)

3/15/06	Lexington, Va.	W, 7-3
---------	----------------	--------

Norfolk State (9-0)

3/14/01	Norfolk, Va.	W, 11-2
4/25/02	Lexington, Va.	W, 7-5
2/21/03	Norfolk, Va.	W, 5-0
3/5/04	Lexington, Va.	W, 9-4
3/6/04	Lexington, Va.	W, 7-6
3/7/04	Lexington, Va.	W, 9-8
3/16/05	Lexington, Va.	W, 8-3
3/22/05	Norfolk, Va.	W, 7-4
3/22/06	Lexington, Va.	W, 3-2 (10)

Old Dominion (7-29)

1963	Unknown	L, 1-6
4/15/64	Lexington, Va.	L, 1-4
5/6/66	Lexington, Va.	W, 6-5 (13)
5/2/67	Lexington, Va.	L, 5-7
4/19/68	Lexington, Va.	W, 10-9
4/19/68	Lexington, Va.	W, 6-4
1969	Lexington, Va.	L, 1-2
1970	Unknown	L, 0-1
1970	Unknown	W, 2-1
4/30/71	Lexington, Va.	L, 3-9
4/30/71	Lexington, Va.	W, 3-1
4/17/76	Unknown	L, 2-4
4/18/77	Lexington, Va.	W, 7-6
3/24/78	Norfolk, Va.	L, 0-7
3/24/78	Norfolk, Va.	L, 2-10
4/14/78	Lexington, Va.	L, 9-13
4/10/79	Lexington, Va.	W, 5-4
4/10/79	Lexington, Va.	L, 1-10

4/16/80	Norfolk, Va.	L, 3-15
5/1/81	Lexington, Va.	L, 4-27
5/1/81	Lexington, Va.	L, 0-18
4/10/82	Lexington, Va.	L, 5-6
4/10/82	Lexington, Va.	L, 5-13
4/18/84	Norfolk, Va.	L, 2-13
5/2/86	Norfolk, Va.	L, 7-15
3/14/89	Norfolk, Va.	L, 4-9
3/10/92	Norfolk, Va.	L, 3-12 (9)
3/10/92	Norfolk, Va.	L, 0-15
4/7/93	Lexington, Va.	L, 3-6
3/15/94	Norfolk, Va.	L, 5-17
2/9/96	Charleston, S.C.	L, 7-13
3/11/97	Lexington, Va.	L, 5-13
3/12/97	Lexington, Va.	L, 7-19
3/13/02	Norfolk, Va.	L, 7-8
3/23/04	Norfolk, Va.	L, 2-4
5/11/05	Norfolk, Va.	L, 2-9

Radford (12-13-1)

4/2/87	Lexington, Va. (W&L)	W, 8-1
4/2/87	Lexington, Va. (W&L)	W, 10-3
3/23/88	Radford, Va.	W, 11-4
4/3/89	Radford, Va.	L, 4-26
4/12/89	Lexington, Va.	L, 7-14
3/6/91	Lexington, Va.	T, 11-11 (8)
4/10/91	Radford, Va.	L, 8-9
3/26/92	Radford, Va.	L, 2-5
4/1/92	Lexington, Va.	W, 7-6
4/19/93	Lexington, Va.	W, 8-4
3/22/94	Lexington, Va.	W, 10-1
4/25/94	Radford, Va.	L, 4-12
2/27/01	Lexington, Va.	L, 3-12
4/3/02	Radford, Va.	L, 1-2
3/4/03	Lexington, Va.	L, 1-2*
4/2/03	Radford, Va.	W, 11-6
4/2/04	Lexington, Va.	L, 4-15
4/3/04	Lexington, Va.	L, 9-13
4/4/04	Lexington, Va.	L, 4-9
5/20/05	Radford, Va.	W, 6-0
5/21/05	Radford, Va.	W, 5-4
5/22/05	Radford, Va.	L, 5-6
5/26/05	Conway, S.C.%	L, 7-8
4/14/06	Lexington, Va.	W, 14-6
4/15/06	Lexington, Va.	W, 11-4
4/15/06	Lexington, Va.	L, 7-12

*-Game Later Forfeited

Richmond (21-73)

4/17/51	Lexington, Va.	L, 1-13
5/11/51	Richmond, Va.	L, 3-5
1952	Richmond, Va.	L, 5-11
1952	Lexington, Va.	L, 4-5
1953	Unknown	W, 3-2
1953	Unknown	L, 2-4
4/30/54	Unknown	L, 5-8
5/6/54	Unknown	W, 11-9
1955	Richmond, Va.	L, 0-8
1955	Lexington, Va.	L, 14-16
1956	Unknown	L, 3-7
1956	Unknown	W, 8-1
5/1/57	Lexington, Va.	L, 1-2
5/7/57	Richmond, Va.	L, 1-21
1958	Lexington, Va.	L, 3-9
1958	Richmond, Va.	L, 1-10
1959	Richmond, Va.	L, 3-6
1960	Lexington, Va.	L, 2-15
1960	Richmond, Va.	L, 8-10
1961	Unknown	L, 0-5
1961	Unknown	L, 2-4
1962	Lexington, Va.	L, 4-5
1962	Richmond, Va.	L, 0-13
1963	Unknown	L, 3-4
5/14/63	Unknown	W, 4-2
1964	Richmond, Va.	W, 9-4
5/13/64	Lexington, Va.	L, 0-4
1965	Richmond, Va.	L, 6-9
5/12/65	Lexington, Va.	W, 3-2
5/4/66	Richmond, Va.	L, 2-3
5/4/66	Richmond, Va.	W, 2-1
4/19/67	Richmond, Va.	L, 3-7
5/10/67	Lexington, Va.	W, 6-2
4/6/68	Richmond, Va.	W, 5-4
5/7/68	Lexington, Va.	L, 1-4
5/2/69	Unknown	W, 2-0
5/2/69	Unknown	W, 2-0
1970	Unknown	W, 2-0
1970	Unknown	W, 2-1
4/20/71	Lexington, Va.	L, 0-6
4/20/71	Lexington, Va.	L, 5-7
4/29/71	Richmond, Va.	L, 0-6
4/29/71	Richmond, Va.	L, 3-9
4/29/72	Richmond, Va.	L, 4-7
4/29/72	Richmond, Va.	L, 3-4
5/2/72	Lexington, Va.	L, 5-13
5/2/72	Lexington, Va.	L, 3-7
4/16/73	Richmond, Va.	L, 6-7
4/21/73	Lexington, Va.	L, 2-14
4/4/74	Richmond, Va.	L, 0-2
4/8/74	Richmond, Va.	L, 4-5
4/3/75	Richmond, Va.	L, 2-5
4/24/75	Lexington, Va.	L, 2-7
4/7/76	Lexington, Va.	L, 4-17
4/21/76	Richmond, Va.	L, 3-9
4/15/77	Richmond, Va.	L, 5-6
4/15/77	Richmond, Va.	L, 1-2
4/12/78	Lexington, Va.	L, 0-8
4/18/78	Richmond, Va.	L, 5-13
4/6/79	Richmond, Va.	L, 3-5
4/6/79	Richmond, Va.	L, 1-2
3/16/80	Lexington, Va.	L, 10-13
3/25/81	Lexington, Va.	L, 4-7
3/25/81	Lexington, Va.	L, 0-14
4/12/84	Richmond, Va.	W, 8-1
5/5/85	Lexington, Va.	L, 3-11
5/5/85	Lexington, Va.	W, 7-0
3/3/86	Richmond, Va.	L, 0-3
4/6/88	Lexington, Va.	W, 7-6
4/21/88	Richmond, Va.	L, 3-8
3/16/89	Richmond, Va.	W, 5-3
3/22/89	Lexington, Va.	L, 6-10
4/4/90	Richmond, Va.	L, 2-5
4/19/90	Lexington, Va.	L, 0-5
3/20/91	Richmond, Va.	L, 8-17
4/17/91	Lexington, Va.	L, 4-8
3/25/92	Lexington, Va.	L, 2-16
4/15/92	Richmond, Va.	L, 1-14
3/24/93	Richmond, Va.	L, 2-8
4/14/93	Lexington, Va.	L, 2-5
3/30/94	Richmond, Va.	L, 2-6
4/5/95	Richmond, Va.	L, 4-7
3/3/99	Richmond, Va.	L, 7-14 (6)
4/30/00	Lexington, Va.	L, 7-17
2/20/01	Richmond, Va.	L, 6-12
4/24/01	Lexington, Va.	L, 4-17
2/19/02	Richmond, Va.	L, 1-9
3/5/02	Lexington, Va.	L, 2-10
3/5/03	Richmond, Va.	L, 8-9
3/3/04	Richmond, Va.	L, 3-6
3/17/04	Lexington, Va.	W, 3-1
2/23/05	Richmond, Va.	W, 17-7
2/28/06	Richmond, Va.	W, 6-0
4/12/06	Lexington, Va.	W, 15-9

UNC Asheville (3-6)

4/16/04	Asheville, N.C.	L, 3-11
4/17/04	Asheville, N.C.	L, 5-6
4/18/04	Asheville, N.C.	W, 7-6
3/18/05	Lexington, Va.	W, 23-0
3/19/05	Lexington, Va.	W, 8-7

Series Versus 2006 Opponents

3/20/05	Lexington, Va.	L, 9-13
4/28/06	Asheville, N.C.	L, 0-9
4/29/06	Asheville, N.C.	L, 4-10
4/30/06	Asheville, N.C.	L, 5-6

Virginia (14-48)

4/18/51	Charlottesville, Va.	L, 2-12
5/18/51	Lexington, Va.	L, 2-7
1952	Charlottesville, Va.	L, 5-12
1952	Lexington, Va.	L, 2-9
1953	Unknown	L, 1-6
5/12/54	Unknown	L, 3-7
5/21/54	Unknown	W, 7-5
1955	Unknown	W, 6-5
1955	Unknown	L, 1-2
1956	Unknown	W, 8-5
1956	Unknown	L, 2-4
4/2/57	Unknown	L, 0-2
4/27/57	Unknown	L, 4-10
1958	Unknown	W, 13-5
1960	Unknown	W, 17-6
1961	Unknown	L, 3-8
1962	Unknown	W, 7-1
1963	Unknown	L, 1-12
4/29/65	Unknown	W, 3-2
5/17/66	Charlottesville, Va.	L, 6-12
4/12/67	Lexington, Va.	W, 2-0
4/7/69	Charlottesville, Va.	L, 1-6
1970	Unknown	L, 1-5
4/26/71	Charlottesville, Va.	L, 2-9
4/25/72	Lexington, Va.	L, 4-9
1973	Unknown	L, 1-11
4/11/74	Lexington, Va.	L, 4-6 (12)
4/7/75	Charlottesville, Va.	L, 1-11
4/8/76	Unknown	L, 6-8
3/31/77	Charlottesville, Va.	L, 1-16
3/31/78	Lexington, Va.	L, 1-6
1979	Charlottesville, Va.	W, 2-1 (10)
4/10/80	Lexington, Va.	L, 0-7
4/10/80	Lexington, Va.	L, 2-5
5/4/81	Charlottesville, Va.	L, 3-13
5/4/81	Charlottesville, Va.	L, 2-8
4/29/82	Lexington, Va.	W, 8-1
4/29/82	Lexington, Va.	L, 1-4
3/24/83	Charlottesville, Va.	L, 3-11
4/3/84	Lexington, Va.	L, 4-11
3/6/85	Lexington, Va.	L, 1-5
4/30/85	Charlottesville, Va.	L, 5-8
4/9/86	Lexington, Va.	L, 9-12
4/22/86	Madison, Va.	L, 0-17
3/24/87	Charlottesville, Va.	L, 0-8
4/5/88	Lexington, Va.	L, 5-11
4/26/88	Charlottesville, Va.	W, 5-3
3/28/89	Charlottesville, Va.	L, 13-14 (10)
4/17/89	Lexington, Va.	L, 8-14
3/6/90	Charlottesville, Va.	W, 5-4
3/7/91	Charlottesville, Va.	L, 5-16
2/22/92	Lexington, Va.	L, 5-14
4/13/92	Charlottesville, Va.	L, 1-12
2/23/93	Charlottesville, Va.	L, 3-6
4/14/94	Lexington, Va.	W, 12-3
2/28/95	Charlottesville, Va.	L, 1-5
4/13/95	Lexington, Va.	W, 6-4
4/22/96	Charlottesville, Va.	L, 4-9
3/25/97	Lexington, Va.	L, 3-13
2/25/98	Charlottesville, Va.	L, 7-13 (8)
3/30/05	Charlottesville, Va.	L, 1-2
4/18/06	Charlottesville, Va.	L, 0-5

VCU (6-24)

1953	Unknown	W, 19-1
4/26/54	Unknown	W, 20-3
1955	Unknown	W, 5-4
1955	Unknown	W, 7-2
1957	Unknown	L, 5-6

4/19/73	Richmond, Va.	W, 11-2
4/18/79	Richmond, Va.	L, 2-5
4/18/79	Richmond, Va.	L, 3-4
4/28/81	Lexington, Va.	L, 3-17
4/28/81	Lexington, Va.	L, 10-14
3/31/81	Richmond, Va.&	L, 8-9 (8)
3/31/81	Richmond, Va.&	L, 3-9
3/23/83	Lexington, Va.	L, 3-7
3/26/85	Lexington, Va.	W, 6-4
3/4/86	Richmond, Va.	L, 6-7
3/4/89	Richmond, Va.	L, 3-4 (10)
3/2/91	Lexington, Va.	L, 3-11
4/2/92	Lexington, Va.	L, 2-9
4/7/92	Richmond, Va.	L, 2-9
4/20/93	Lexington, Va.	L, 11-14
2/25/94	Lexington, Va.	L, 7-9
4/20/94	Richmond, Va.	L, 1-6
2/21/95	Richmond, Va.	L, 6-7
4/4/95	Lexington, Va.	L, 11-13
3/13/01	Richmond, Va.	L, 0-7
5/2/01	Lexington, Va.	L, 5-13
4/24/02	Richmond, Va.	L, 0-5
4/22/03	Richmond, Va.	L, 0-1
4/20/04	Richmond, Va.	L, 4-5
5/10/06	Richmond, Va.	L, 6-8

&-Played at Parker Field, Richmond

Virginia Tech (14-64)

4/25/51	Blacksburg, Va.	L, 0-9
5/16/51	Lexington, Va.	L, 1-16
1952	Lexington, Va.	L, 2-3
1952	Blacksburg, Va.	L, 1-2
1953	Unknown	W, 3-1
4/28/54	Unknown	L, 2-5
5/17/54	Unknown	W, 5-3
1955	Unknown	W, 9-8
1955	Unknown	L, 3-9
1956	Unknown	L, 2-3
1956	Unknown	L, 5-11
4/10/57	Unknown	W, 8-1
5/15/57	Unknown	L, 2-4
1959	Unknown	W, 3-2
1959	Unknown	L, 9-12
1960	Unknown	L, 0-8
1960	Unknown	L, 4-10
1961	Unknown	W, 3-2
1962	Unknown	W, 8-7
1962	Unknown	W, 4-0
1963	Unknown	L, 4-5
1963	Unknown	L, 3-4
4/21/64	Lexington, Va.	W, 4-2
5/11/64	Blacksburg, Va.	L, 6-8
4/20/65	Lexington, Va.	W, 2-1
5/5/65	Blacksburg, Va.	L, 7-6
4/20/66	Lexington, Va.	L, 0-4
5/10/66	Blacksburg, Va.	L, 5-6 (10)
5/4/67	Lexington, Va.	W, 5-4 (11)
5/18/67	Blacksburg, Va.	L, 0-4
5/10/68	Blacksburg, Va.	L, 2-14
5/16/68	Lexington, Va.	L, 2-4
4/11/69	Blacksburg, Va.	L, 3-6
4/25/69	Lexington, Va.	W, 8-6
1970	Unknown	L, 0-2
1970	Unknown	L, 0-3
4/11/71	Lexington, Va.	L, 2-13
4/3/72	Blacksburg, Va.	L, 0-4
5/7/72	Lexington, Va.	L, 0-2
1973	Lexington, Va.	L, 2-7
4/2/74	Blacksburg, Va.	L, 1-8
4/26/74	Lexington, Va.	L, 1-8
3/27/75	Blacksburg, Va.	L, 5-10
4/6/75	Lexington, Va.	L, 2-12
4/3/76	Unknown	L, 12-19
4/25/76	Unknown	L, 4-17
3/24/77	Covington, Va.	L, 7-12

4/12/77	Lexington, Va.	L, 4-8
5/5/78	Blacksburg, Va.	L, 0-4
5/5/78	Blacksburg, Va.	L, 1-12
4/7/79	Lexington, Va.	L, 0-9
4/26/80	Blacksburg, Va.	L, 2-8
4/8/81	Lexington, Va.	L, 0-14
4/22/81	Blacksburg, Va.	L, 1-13
4/7/82	Lexington, Va.	L, 6-11
4/7/82	Lexington, Va.	L, 4-12
5/2/83	Blacksburg, Va.	L, 9-10
5/2/83	Blacksburg, Va.	L, 4-5
5/1/84	Lexington, Va.	L, 4-6
5/1/84	Lexington, Va.	L, 4-13
4/17/85	Blacksburg, Va.	L, 3-13
5/3/85	Lexington, Va.	L, 3-16
4/30/86	Blacksburg, Va.	L, 4-27
5/4/86	Lexington, Va.	L, 6-9
4/30/87	Blacksburg, Va.	W, 13-12
4/11/89	Blacksburg, Va.	L, 8-20
3/7/90	Blacksburg, Va.	L, 2-9
4/16/91	Lexington, Va.	L, 3-12
4/23/91	Blacksburg, Va.	L, 1-16
3/2/92	Blacksburg, Va.	L, 5-16
4/22/93	Lexington, Va.	L, 0-6
4/18/95	Lexington, Va.	L, 1-5
4/4/01	Blacksburg, Va.	L, 3-7
5/1/02	Blacksburg, Va.	L, 5-7
4/15/03	Blacksburg, Va.	L, 4-6
4/28/04	Blacksburg, Va.	L, 0-8
4/27/05	Blacksburg, Va.	W, 6-2
4/5/06	Blacksburg, Va.	L, 8-9

William & Mary (42-58)

5/4/51	Lexington, Va.	L, 10-29
5/12/51	Williamsburg, Va.	L, 3-5
1952	Williamsburg, Va.	L, 1-3
1952	Lexington, Va.	W, 9-8
1953	Unknown	W, 8-6
5/1/54	Unknown	W, 25-3
5/5/54	Unknown	W, 19-2
1955	Unknown	L, 13-14
1955	Unknown	W, 9-8
1956	Unknown	L, 3-6
1956	Unknown	W, 4-2
5/2/57	Unknown	W, 3-1
5/8/57	Unknown	W, 7-0
1958	Unknown	W, 9-1
1958	Unknown	W, 11-0
1959	Unknown	W, 2-1
1959	Unknown	L, 2-4
1960	Unknown	W, 10-4
1960	Unknown	W, 6-3
1961	Unknown	W, 5-1
1962	Unknown	L, 5-7
1962	Unknown	L, 1-4
1963	Unknown	W, 6-3
1963	Unknown	W, 6-5
4/17/64	Lexington, Va.	W, 8-3
4/24/64	Williamsburg, Va.	W, 6-4
1965	Williamsburg, Va.	W, 3-1
4/16/65	Lexington, Va.	W, 6-1
4/8/66	Lexington, Va.	L, 3-7
5/3/66	Williamsburg, Va.	L, 0-4
3/24/67	Williamsburg, Va.	L, 3-8
4/9/67	Lexington, Va.	W, 4-2
4/15/68	Lexington, Va.	L, 4-5
4/15/68	Lexington, Va.	L, 0-3
3/22/69	Williamsburg, Va.	L, 6-7
3/22/69	Williamsburg, Va.	L, 1-3
4/12/69	Lexington, Va.	W, 7-4
4/12/69	Lexington, Va.	L, 3-8
5/15/69	Colonial Heights, Va.*	W, 5-3 (13)
1970	Unknown	L, 0-2
1970	Unknown	L, 6-7
1970	Unknown	L, 1-4

1970	Unknown	W, 3-1
4/10/71	Lexington, Va.	L, 1-6
4/10/71	Lexington, Va.	W, 1-0
4/24/71	Williamsburg, Va.	L, 1-2
4/24/71	Williamsburg, Va.	L, 3-9
4/10/72	Williamsburg, Va.	L, 1-12
4/10/72	Williamsburg, Va.	L, 4-5
4/17/72	Lexington, Va.	W, 2-1
4/17/72	Lexington, Va.	L, 2-3
4/30/73	Lexington, Va.	L, 0-3
4/30/73	Lexington, Va.	L, 0-6
4/9/74	Lexington, Va.	W, 5-4
4/18/74	Lexington, Va.	W, 4-3
4/16/75	Williamsburg, Va.	W, 5-4
4/16/75	Williamsburg, Va.	L, 2-8
3/29/76	Unknown	L, 3-4
4/27/76	Unknown	L, 2-11
3/27/77	Williamsburg, Va.	L, 0-3
3/27/77	Williamsburg, Va.	L, 2-14
3/21/79	Lexington, Va.	W, 6-4
4/17/80	Williamsburg, Va.	W, 7-5
4/25/81	Lexington, Va.	L, 4-5
4/25/81	Lexington, Va.	L, 1-6
4/12/83	Lexington, Va.	W, 10-3
4/12/83	Lexington, Va.	L, 4-8
4/19/84	Williamsburg, Va.	L, 3-7
4/19/84	Williamsburg, Va.	L, 1-2
4/9/85	Lexington, Va.	W, 15-6
4/9/85	Lexington, Va.	L, 5-8 (10)
4/15/86	Lexington, Va.	W, 2-1 (10)
4/15/86	Lexington, Va.	L, 10-13
4/7/87	Williamsburg, Va.	L, 2-3
4/7/87	Williamsburg, Va.	W, 6-4
2/27/91	Williamsburg, Va.	L, 0-4
4/13/93	Lexington, Va.	W, 5-1
4/13/93	Lexington, Va.	L, 5-6 (11)
3/16/94	Williamsburg, Va.	L, 3-4 (10)
3/7/95	Lexington, Va.	L, 2-4
3/16/95	Williamsburg, Va.	W, 8-7
3/27/96	Williamsburg, Va.	L, 9-10
3/27/96	Williamsburg, Va.	W, 2-1
4/3/96	Lexington, Va.	W, 8-4
4/3/96	Lexington, Va.	W, 8-3
4/3/97	Lexington, Va.	L, 5-17
4/15/97	Williamsburg, Va.	L, 5-6
3/25/98	Lexington, Va.	L, 6-14
4/13/99	Williamsburg, Va.	L, 3-9
4/20/99	Lexington, Va.	L, 5-12
4/11/00	Lexington, Va.	L, 12-14
4/28/00	Williamsburg, Va.	L, 3-5
4/28/00	Williamsburg, Va.	L, 2-9
4/18/01	Williamsburg, Va.	L, 1-12 (7)
4/17/02	Williamsburg, Va.	L, 1-9
3/26/03	Lexington, Va.	L, 2-13
4/21/04	Lexington, Va.	W, 6-5
5/19/04	Williamsburg, Va.	L, 8-13
4/5/05	Lexington, Va.	W, 8-6
4/20/05	Williamsburg, Va.	L, 6-12

Winthrop (3-7)

4/23/04	Lexington, Va.	L, 3-14
4/24/04	Lexington, Va.	W, 5-1
4/25/04	Lexington, Va.	L, 1-2
4/23/05	Rock Hill, S.C.	L, 0-3
4/23/05	Rock Hill, S.C.	L, 1-6
4/24/05	Rock Hill, S.C.	L, 2-5
5/25/05	Conway, S.C.%	L, 1-11
5/19/06	Lexington, Va.	L, 5-10
5/20/06	Lexington, Va.	W, 10-4
5/21/06	Lexington, Va.	W, 7-3

§-Southern Conference Tournament

%-Big South Conference Tournament

*-Southern Conference Northern Division Playoff

Postseason Results

SoCon Division Playoff

1969- Colonial Heights, Va.

VMI 5, William & Mary 3 (13 innings)

SoCon Championship Finals

1969- Fort Eustis, Va.

Furman 7, VMI 2

Furman 5, VMI 4

SoCon Tournament

1984- Cullowhee, N.C.

#1S Western Carolina 10, #2N VMI 7

#2S The Citadel 12, #2N VMI 7

1987- Asheville, N.C.

#1S Western Carolina 16, #2N VMI 4

#2N VMI 15, #2S Davidson 7

#2N VMI 10, #1N Appalachian State 9 (10)

#1S Western Carolina 9, #2N VMI 4

1988- Asheville, N.C.

#2S The Citadel, 9, #1N VMI 8

#2N Appalachian State 11, #1N VMI 4

1989- Asheville, N.C.

#5 The Citadel 17, #4 VMI 11

#6 Furman 7, #4 VMI 5

1990- Charleston, S.C.

#5 Appalachian State 9, #4 VMI 2

#6 Furman 10, #4 VMI 9 (10)

1991- Charleston, S.C.

#2 Western Carolina 18, #7 VMI 2

#4 Furman 8, #7 VMI 3

1992- Charleston, S.C.

#1 Western Carolina 3, #8 VMI 2

#8 VMI 5, #2 Furman 3

#3 East Tennessee State 20, #8 VMI 3

1993- Charleston, S.C.

#8 VMI 8, #1 Georgia Southern 0

#8 VMI 15, #5 Davidson 5

#8 VMI 8, #2 Western Carolina 4

#2 Western Carolina 12, #8 VMI 5

#2 Western Carolina 5, #8 VMI 1

1994- Charleston, S.C.

#7 VMI 6, #2 Georgia Southern 4

#7 VMI 6, #3 Marshall 4

#5 The Citadel 4, #7 VMI 3

#1 Western Carolina 7, #7 VMI 1

1995- Charleston, S.C.

#2 Georgia Southern 4, #7 VMI 3

#7 VMI 13, #6 Appalachian State 4

#5 East Tennessee State 8, #7 VMI 4

1996- Charleston, S.C.

#7 VMI 7, #2 Western Carolina 3

#7 VMI 4, #6 East Tennessee State 2

#1 Georgia Southern 11, #7 VMI 2

#4 The Citadel 8, #7 VMI 5

1997- Charleston, S.C.

#1 Western Carolina 4, #8 VMI 3

#5 East Tennessee State 7, #8 VMI 3 (10)

1999- Charleston, S.C.

#2 College of Charleston 15, #7 VMI 4

#3 Western Carolina 8, #7 VMI 4

2003- Charleston, S.C.

#2 Georgia Southern 6, #7 VMI 4

#7 VMI 2, #3 The Citadel 1

#7 VMI 2, #5 Furman 1

#4 UNC Greensboro 10, #7 VMI 1

Big South Tournament

2005- Conway, S.C.

#2 Winthrop 11, #5 VMI 1

#6 Radford 8, #5 VMI 7

Conference Tournament Miscellany

Record as a....

#4 Seed:0-4
#5 Seed:0-2
#7 Seed:7-12
#8 Seed:4-6

Southern Conference Divisional Seeding:

#1 North Seed:0-2
#2 North Seed:2-4

Record Against....

Appalachian State:2-2
The Citadel:1-5
College of Charleston:0-1
Davidson:2-0
East Tennessee State:1-3
Furman:2-3
Georgia Southern:2-3
Marshall:1-0
Radford:0-1
UNC Greensboro:0-1
Western Carolina:2-10
Winthrop:0-1

Record When Playing At....

Asheville, N.C.:2-6
Charleston, S.C.:11-20
Conway, S.C.:0-2
Cullowhee, N.C.:0-2

Most Coaching Wins

Chris Finwood:6-6
Scott Gines:3-8
Donny White:2-4
Tom Slater:2-2
Paul Maini:0-8
Marlin Ikenberry:0-2

Best Coaching Win Pct. (Min. 6 games)

Chris Finwood:500
Scott Gines:273
Donny White:333
Paul Maini:000

Complete Games:

Richard Sparks, vs. Davidson, 4/25/87
Marc Phillips, vs. Furman, 4/24/92
John Payne, vs. Georgia South. (SHO), 4/29/93
John Payne, vs. Georgia Southern, 4/28/94
Jay Adams, vs. Appalachian State, 4/28/95
W.G. Smith, vs. Western Carolina, 4/25/96
Danny Hughes, vs. East Tennessee St., 4/27/96
Phil Hendrix, vs. The Citadel, 5/22/03
Jeremy Harper, vs. Furman, 5/23/03

Four-Hit Games:

5, Rob Holmes, vs. The Citadel, 4/28/84
5, Louie Napoleon, vs. Davidson, 4/30/93
4, Gary Sibayan, vs. Davidson, 4/25/87
4, Marshall Simpson, vs. Furman, 4/27/90
4, David Groseclose, vs. Davidson, 4/30/93



The eighth-seeded 1993 squad posted the most wins in a single tournament by upsetting top-seeded Georgia Southern, second-seeded Western Carolina and fifth-seeded Davidson on their way to the Championship Finals.

Postseason Single-Game Records

Individual

Hitting

Hits- 5, Rob Holmes, vs. The Citadel, 4/28/84 & Louie Napoleon, vs. Davidson, 4/30/93

Runs- 5, David Groseclose, vs. Davidson, 4/30/93

RBI- 7, Ryan Glynn, vs. Appalachian State, 4/20/95

At Bats- 6, Several Times

Walks- 3, Several Times

Doubles- 2, Several Times

Triples- 1, Several Times

Home Runs- 2, John Parrott, vs. Davidson, 4/25/87; John Parrott, vs. The Citadel, 4/27/89; Bert Saunders, vs. Western Carolina, 4/28/84

Total Bases- 10, Rob Holmes, vs. The Citadel, 4/28/84

Stolen Bases- 3, David Groseclose, vs. Georgia Southern, 4/28/94

Pitching

Innings Pitched- 9.0, (Nine Times) Most Recent Jeremy Harper, vs. Furman, 5/23/03

Strikeouts- 9, Jay Adams, vs. Appalachian State, 4/28/95; W.G. Smith, vs. Western Carolina, 4/25/96; Phil Hendrix, vs. The Citadel, 5/22/03

Fewest Hits (Min. 9 IP)- 6, Marc Phillips, vs. Furman, 4/24/92; Jeremy Harper, vs. Furman, 5/23/03

Fewest Earned Runs (Min. 9 IP)- 0, John Payne, vs. Georgia Southern, 4/29/93

Fewest Runs (Min. 9 IP)- 0, John Payne, vs. Georgia Southern, 4/29/93

Team

Hitting

Hits- 20, vs. Davidson, 4/30/93

Runs- 15, vs. Davidson, 4/25/87 & vs. Davidson, 4/30/93

RBI- 15, vs. Davidson, 4/25/87

At Bats- 46, vs. The Citadel, 4/28/84 & vs. The Citadel, 4/27/89 & vs. Davidson, 4/30/93

Walks- 10, vs. Appalachian State, 4/26/90

Doubles- 4, (Several Times), Most Recent vs. Western Carolina, 4/24/97

Triples- 1, (Several Times), Most Recent vs. Georgia Southern, 5/21/03

Home Runs- 4, vs. Davidson, 4/25/87

Total Bases- 32, vs. Davidson, 4/25/87

Stolen Bases- 4, vs. Furman, 4/24/92 & vs. Davidson, 4/30/93

Pitching

Strikeouts- 9, (Four times) Most Recent vs. The Citadel, 5/22/03

Fewest Hits- 5, vs. Georgia Southern, 5/21/03

Fewest Earned Runs- 0, vs. Georgia Southern, 4/29/93

Fewest Runs- 0, vs. Georgia Southern, 4/29/93

Fewest Walks- 0, vs. The Citadel, 4/29/88

Single-Postseason Records

Individual

Hitting

Hits- 10, David Groseclose, 5 games, 1993 (SoCon)

Runs- 9, David Groseclose, 5 games, 1993 (SoCon)

RBI- 9, Ryan Glynn, 3 games, 1995, (SoCon)

Walks- 5, Warren Williams, 5 games, 1993 (SoCon)

Doubles- 3, Gary Sibayan, 4 games, 1987 (SoCon) & Warren Williams, 2 games, 1991 (SoCon)

Triples- 2, Franco Martin, 3 games, 1995 (SoCon)

Home Runs- 3, John Parrott & Richard Stone, 4 games, 1987 (SoCon)

Total Bases- 18, Richard Stone, 4 games, 1987 (SoCon)

Stolen Bases- 5, David Groseclose, 4 games, 1994 (SoCon)

Pitching

Innings Pitched- 16.0, John Payne, 1993 (SoCon)

Wins- 1, Several Times, Most Recent Jeremy Harper, 2003 (SoCon)

Games Started- 2, John Payne, 1993 (SoCon)

Saves- 1, Marc Phillips, 1994 (SoCon)

Relief Appearances- 3, Billy Goodrich, 1993 (SoCon) & Marc Phillips, 1994 (SoCon)

Strikeouts- 9, Jay Adams, 1995 (SoCon) & W.G. Smith, 1996 (SoCon) & Phil Hendrix, 2003 (SoCon)

Team

Hitting

Hits- 54, 5 games, 1993 (SoCon)

Runs- 37, 5 games, 1993 (SoCon)

RBI- 31, 5 games, 1993 (SoCon)

Walks- 20, 5 games, 1993 (SoCon)

Doubles- 10, 4 games, 1987 (SoCon)

Triples- 2, 3 games, 1995 (SoCon) & 4 games, 2003 (SoCon)

Home Runs- 9, 4 games, 1987 (SoCon)

Total Bases- 87, 4 games, 1987 (SoCon)

Stolen Bases- 8, 5 games, 1993 (SoCon)

Pitching

Wins- 3, 1993 (SoCon)

Saves- 1, 1994 (SoCon)

Strikeouts- 30, 4 games, 2003 (SoCon)

Complete Games- 2, 1996 (SoCon) & 2003 (SoCon)

Career-Postseason Records

Hitting

Hits- 25, David Groseclose, 1992-95

Runs- 19, David Groseclose, 1992-95

RBI- 13, Ryan Glynn, 1993-95

Walks- 11, David Groseclose, 1992-95

Doubles- 6, Warren Williams, 1990-93

Triples- 2, Franco Martin, 1994-97

Home Runs- 5, John Parrott, 1987, 1989

Total Bases- 29, David Groseclose, 1992-95

Stolen Bases- 9, David Groseclose, 1992-95

At Bats- 61, Louie Napoleon, 1993-96

Games Played- 16, Louie Napoleon, 1993-96

Pitching

Innings Pitched- 32.1, John Payne, 1991-94

Wins- 2, John Payne, 1991-94

Games Started- 4, John Payne, 1991-94

Complete Games- 2, John Payne, 1991-94

Saves- 1, Marc Phillips, 1994 (SoCon)

Appearances- 9, Billy Goodrich, 1992-95

Relief Appearances- 9, Billy Goodrich, 1992-95

Strikeouts- 15, Jay Adams, 1995-97

Team Single-Game Records

<p><u>Hitting</u></p> <p>Most at bats 56; East Tennessee State; Feb 25, 1995</p> <p>Most runs scored 28, at Coppin State; Apr 2, 2002</p> <p>Most hits 22, Several Times (Most Recent vs. Coppin State, Feb 17, 2006)</p> <p>Most runs batted in 24, at Coppin State; Apr 2, 2002 24, Mount St. Mary's; Mar 5, 1999</p> <p>Most doubles 9, vs. East Tennessee State; May 5, 2001</p> <p>Most triples 2, Several Times (Most Recent vs. Georgetown, May 17, 2005)</p> <p>Most home runs 5, UNC Asheville; Mar 18, 2005</p> <p>Most walks 13, at Troy State, Feb 15, 1998 13, Juniata, Mar 10, 1995</p> <p>Most times hit by pitch 9, at Liberty; Apr 01, 2006</p>	<p>Most times struck out 16, vs. The Citadel, Apr 25, 1998 16, at Richmond, Mar 30, 1994</p> <p>Most stolen bases 12, Juniata, Mar 10, 1995</p> <p>Most times caught stealing 3, Several Times (Most Recent at High Point; Apr 08, 2006)</p> <p>Most steal attempts 13, Juniata, Mar 10, 1995</p> <p><u>Pitching</u></p> <p>Most innings pitched 15.0, East Tennessee State; Feb 25, 1995</p> <p>Most hits allowed 27, vs. Akron, Mar 7, 1997</p> <p>Most runs allowed 25, vs. Furman, Mar 18, 2000 25, at Western Carolina, Mar 28, 1998</p> <p>Most earned runs allowed 21, UNC Greensboro, Mar 25, 2000</p> <p>Most walks allowed 16, at Western Carolina, Mar 28, 1998</p>	<p>Most strikeouts 15, vs. Appalachian State, Apr 11, 1998 15, at Furman; Mar 4, 1995 15, North Carolina A&T, Mar 25, 1994</p> <p>Most home runs allowed 7, at Troy State, Feb 15, 1998</p> <p>Most wild pitches 8; vs. Georgia Southern; Apr 10, 1999 8, vs. Old Dominion, Mar 12, 1997</p> <p>Most balks 2; at Richmond; Feb 19, 2002</p> <p><u>Defensive</u></p> <p>Most putouts 45, East Tennessee State; Feb 25, 1995</p> <p>Most assists 22, vs. Norfolk State, Mar 7, 2004</p> <p>Most errors 9; at Appalachian State; Mar 27, 1999 9, vs. East Tennessee State; May 5, 2001</p> <p>Most stolen bases against 9, at UNC Greensboro, Mar 9, 2001</p> <p>Most caught stealing by 3; Radford; Apr 15, 2006 3; Lafayette; Feb 25, 2006</p>
--	--	---

Individual Single-Game Records

<p><u>Hitting</u></p> <p>Most at bats 7, Several Times, (Most Recent by Chris Brooks, vs. Appalachian State, Apr 11, 1998)</p> <p>Most runs scored 5, Several Times (Most Recent by Chad Rice, vs. Coppin State; Feb 17, 2006)</p> <p>Most hits 6, Bobby Ross, 1950 6, Warren Williams, vs. Holy Cross, Mar. 5, 1992</p> <p>Most runs batted in 7, Several Times (Most Recent by Robert Crumpler, vs. Fairfield; Mar 07, 2005)</p> <p>Most doubles 3, Chris Catanzaro, vs. The Citadel, Mar 31, 2000</p> <p>Most triples 2, Ed Pearson, at Davidson, Apr 15, 1998</p> <p>Most home runs 3, Nate Shepperson, vs. Appalachian State, Mar 30, 1996 3, Burt Saunders, vs. Virginia Tech, Apr 7, 1982</p> <p>Most walks 4, Several Times (Most Recent by Ryan Colvin, at Norfolk State, Mar 14, 2001)</p>	<p>Most times hit by pitch 3, Robert Crumpler, at Liberty; Apr 01, 2006 3, B.T. Good, vs. Hartford; Mar 11, 2006</p> <p>Most times struck out 4, Several Times (Most Recent by Robert Crumpler, at Vanderbilt, Feb 19, 2005)</p> <p>Most sacrifice hits 3, Patrick Abelon, at Davidson, Apr 5, 1997</p> <p>Most stolen bases 5; Shane Geisslinger, vs. Richmond; Apr 12, 2006</p> <p>Most steal attempts 5; Shane Geisslinger, vs. Richmond; Apr 12, 2006</p> <p><u>Pitching</u></p> <p>Most innings pitched 9.0, Several Times (Most Recent by Trey Barham, vs. Charleston Southern, Mar 17, 2006)</p> <p>Most hits allowed 17, Danny Hughes, at Georgia Southern, Mar 2, 1996</p> <p>Most runs allowed 15, Josh Spradlin, vs. Bucknell, Feb 21, 1998</p> <p>Most earned runs allowed 14, Grayson Craun, at Auburn, Apr 8, 1997</p>	<p>Most walks allowed 9, Matt Poulos, vs. Furman, Mar 19, 2000 9, Goodrich, Appalachian State, Apr 8, 1995</p> <p>Most strikeouts Extra Innings 21, Percy Sensabaugh, vs. The Citadel, 1964 (11 innings) Nine Inning Game 20, Percy Sensabaugh, vs. West Virginia, Apr. 11, 1964 Aluminum Bat Era 15, Grayson Craun, vs. Appalachian State, Apr 11, 1998</p> <p>Most home runs allowed 5, Wes Barrow, Western Carolina; Apr 24, 1999</p> <p>Most wild pitches 5, Phil Nawrocki, vs. Old Dominion, Mar 12, 1997</p> <p><u>Defensive</u></p> <p>Most putouts 23, Jon Wade, Norfolk State, Mar 7, 2004</p> <p>Most assists 8, Several Times (Most Recent by Shane Geisslinger, vs. Charleston Southern; Mar 19, 2006)</p> <p>Most errors 4, Eric Walker, at Western Carolina, Mar 28, 1998</p>
---	--	--

Coaching History

Year	Coach	Overall	Conference
1950	Frank Summers	4-14	2-7
1951	Frank Summers	1-20	0-12
1952	Vince Ragunas	1-13	1-8
1953	Chuck Noe	7-7	4-4
1954	Chuck Noe	12-6	6-4
1955	Chuck Noe	12-8	6-7
1956	Jack Null	12-10	7-7
1957	Jack Null	8-13	4-6
1958	Jack Null	4-12	2-8
1959	Weenie Miller	5-11	5-10
1960	Weenie Miller	6-8	5-8
1961	Charlie McGinnis	7-7	6-6
1962	Charlie McGinnis	8-7	7-7
1963	Charlie McGinnis	14-11	7-7
1964	Charlie McGinnis	11-12-1	5-9
1965	Charlie McGinnis	15-9	8-6
1966	Fred Kelly	10-13	6-10
1967	Fred Kelly	9-11	7-9
1968	Chuck Roys	7-8	3-5
1969	Chuck Roys	10-12	8-7
1970	Tom Sawyer	6-13	4-9
1971	Tom Sawyer	5-24	1-15
1972	Phil Tucker	6-19	3-13
1973	Phil Tucker	3-14	0-11
1974	Donny White	6-14	5-9
1975	Jerry Roane	2-18	1-13
1976	Jerry Roane	6-23	2-12
1977	Vern Beitzel	5-19	2-12
1978	Vern Beitzel	2-27	0-14
1979	Vern Beitzel	6-25	0-15
1980	Vern Beitzel	4-22	0-12
1981	Jim Rowsey	3-37	0-16
1982	Donny White	11-29	6-10
1983	Donny White	11-25	5-9
1984	Donny White	16-18	6-7
1985	Donny White	16-24	8-10
1986	Donny White	15-25	7-11
1987	Donny White	16-16-1	8-4
1988	Paul Maini	20-20	11-7
1989	Paul Maini	16-23	8-7
1990	Paul Maini	12-26	6-8
1991	Paul Maini	2-35-1	1-15
1992	Chris Finwood	11-39	4-15
1993	Chris Finwood	20-29	5-15
1994	Chris Finwood	21-29	10-13
1995	Scott Gines	19-28	10-14
1996	Scott Gines	17-29	7-16
1997	Scott Gines	13-35	6-13
1998	Scott Gines	14-35	7-17
1999	Scott Gines	22-27	13-16
2000	Scott Gines	19-30	11-19
2001	Tom Slater	15-32	8-19
2002	Tom Slater	10-41	1-27
2003	Tom Slater	25-27	16-14
2004	Marlin Ikenberry	23-32	4-20
2005	Marlin Ikenberry	27-28	11-13
2006	Marlin Ikenberry	30-25	9-15

Coaching Records

Coach (Years Coached)	Overall	Win %	Conf.	Win %
Frank Summers (50-51)	5-34	.128	2-19	.095
Vince Ragunas (52)	1-13	.071	1-8	.111
Chuck Noe (53-55)	31-21	.596	16-15	.516
Jack Null (56-58)	24-35	.407	13-21	.382
Weenie Miller (59-60)	11-19	.367	10-18	.357
Charlie McGinnis (61-65)	55-46-1	.529	33-35	.485
Fred Kelly (66-67)	19-24	.442	13-19	.406
Chuck Roys (68-69)	17-20	.459	11-12	.478
Tom Sawyer (70-71)	11-37	.229	5-24	.172
Phil Tucker (72-73)	9-33	.214	3-24	.111
Donny White (74,82-87)	91-151-1	.377	45-60	.429
Jerry Roane (75-76)	8-41	.163	3-25	.107
Vern Beitzel (77-80)	17-93	.155	2-53	.036
Jim Rowsey (81)	3-37	.075	0-16	.000
Paul Maini (88-91)	50-104-1	.326	26-37	.413
Chris Finwood (92-94)	52-97	.349	19-43	.306
Scott Gines (95-00)	104-184	.361	54-95	.362
Tom Slater (01-03)	50-100	.333	25-60	.294
Marlin Ikenberry (04-06)	80-85	.485	24-48	.333

VMI Coaching Leaderboard

By Wins		By Win Percentage		By Seasons Coached	
1. Scott Gines	104	1. Charlie McGinnis	.529	1. Donny White	7
2. Donny White	91	2. Marlin Ikenberry	.485	2. Scott Gines	6
3. Marlin Ikenberry	80	3. Donny White	.377	3. Charlie McGinnis	5
4. Charlie McGinnis	55	4. Scott Gines	.361	4. Vern Beitzel	4
5. Chris Finwood	52	5. Chris Finwood	.349	Paul Maini	4



The Keydets' winningest skipper by percentage was Charlie McGinnis (right), shown here with Gil Minor (center) and Tom Snyder (left) in 1963 at what is currently Brewbaker Field in Lexington.

Batting Average (Minimum 2.2 AB/Game)

1. Greg Weddle	1986	.446
2. Phil Hubbard	1982	.424
3. Phil Hubbard	1980	.416
4. Rod Brewer	1973	.408
5. Chris Finwood	1988	.399
6. Russell Puckett	1976	.398
7. Marshall Simpson	1990	.393
8. Chris Catanzaro	2000	.392
9. Eric Walker	1999	.376
10. Rob Holmes	1982	.375

Slugging Percentage (Minimum 2.2 AB/G)

1. Greg Weddle	1986	.865
2. Greg Weddle	1985	.720
3. Nate Shepperson	1996	.711
4. Andy Beasley	1990	.709
5. Ben Walker	1985	.685
6. Ryan Glynn	1995	.657
7. Scott Snow	1977	.651
8. Mike Lamore	1985	.651
9. Scott Thompkins	1999	.641
10. Kelly Sweppenhiser	2005	.640

On-Base Percentage (Minimum 2.2 AB/G)

1. Mike Lamore	1985	.518
2. Greg Weddle	1986	.509
3. Kelly Sweppenhiser	2005	.494
4. Kevin Thrift	1975	.488
5. Criss Finwood	1988	.481
6. Kelly Sweppenhiser	2006	.479
7. Chris Catanzaro	2000	.476
8. Ben Walker	1985	.474
9. Ben Bradford	1999	.471
10. Phil Hubbard	1982	.468

Hits

1. Chris Catanzaro	2000	76
2. Kelly Sweppenhiser	2005	74
3. Kelly Sweppenhiser	2006	72
4. Eric Walker	1999	70
Klint Reed	2006	70
6. Matt Smith	2005	68
7. Greg Weddle	1986	66
Matt Smith	2004	66
Jacoby Fields	2006	66
10. Robert Crumpler	2005	65

Doubles

1. Chris Catanzaro	2000	24
2. Klint Reed	2006	21
3. Louie Napoleon	1996	18
Jason Annis	2002	18
Kelly Sweppenhiser	2005	18
6. Chris Catanzaro	2001	17
7. Ryan Glynn	1995	16
Chris Catanzaro	1998	16
Jason Annis	2001	16
10. Five Tied With		15

Triples

1. Louie Napoleon	1994	7
2. Matt Smith	2004	5
3. Louie Napoleon	1993	4
Ryan Glynn	1995	4
Ed Pearson	1998	4
Stephen Johnson	2000	4
Elliott Erbe	2005	4
8. Several Tied With		3

Home Runs

1. Greg Weddle	1985	16
2. Greg Weddle	1986	14
Ryan Glynn	1995	14
Nate Shepperson	1996	14
5. Bert Saunders	1985	13
Andy Beasley	1990	13
7. Gary Sibayan	1988	12
John Parrott	1989	12
Scott Thompkins	1997	12
Kelly Sweppenhiser	2005	12

Runs Batted In

1. Greg Weddle	1986	62
2. Ryan Glynn	1995	58
3. Scott Thompkins	1999	55
4. Elliott Erbe	2004	49
5. Michael Goldman	2000	47
6. Chris Catanzaro	2000	46
7. Franco Martin	1997	45
8. Andy Beasley	1988	43
Ryan Glynn	1994	43
Robert Crumpler	2005	43

Total Bases

1. Greg Weddle	1986	128
Kelly Sweppenhiser	2005	128
3. Chris Catanzaro	2000	122
4. Nate Shepperson	1996	118
5. Ryan Glynn	1995	117
6. Stephen Johnson	2000	109
7. Greg Weddle	1985	108
Kelly Sweppenhiser	2006	108
9. Scott Thompkins	1999	107
10. Elliott Erbe	2004	106

Runs

1. Kelly Sweppenhiser	2006	58
2. Chris Catanzaro	2000	56
Stephen Johnson	2000	56
Chad Rice	2006	56
5. Gary Sibayan	1988	53
6. David Groseclose	1995	51
Kelly Sweppenhiser	2005	51
8. Scott Thompkins	1997	48
9. Matt Smith	2004	45
Klint Reed	2006	45

Walks

1. Franco Martin	1994	44
2. Scott Thompkins	1997	41
3. Kelly Sweppenhiser	2005	40
4. Ryan Colvin	2000	38
5. Mike Lamore	1985	37
6. Franco Martin	1997	36
Kelly Sweppenhiser	2006	36
8. Andy Beasley	1988	33
9. Criss Finwood	1985	32
Ryan Colvin	2001	32
Matt Smith	2005	32

Stolen Bases

1. David Groseclose	1995	33
2. David Groseclose	1994	31
3. Gary Sibayan	1986	29
4. Gary Sibayan	1988	27
5. Donny White	1963	26
6. Gary Sibayan	1987	24
7. B.T. Good	2006	21
David Groseclose	1993	21
9. Louie Napoleon	1994	19
10. B.T. Good	2005	17
Shane Geisslinger	2006	17

Hit By Pitch

1. B.T. Good	2006	23
2. Robert Crumpler	2006	18
Kelly Sweppenhiser	2006	18
4. B.T. Good	2005	17
5. Andy Barden	2003	13
Kelly Sweppenhiser	2005	13
7. Michael Goldman	1999	12
B.T. Good	2004	12
9. Jacoby Fields	2005	11
Chad Rice	2006	11

At Bats

1. Matt Smith	2005	223
2. Klint Reed	2006	211
Chad Rice	2006	211
4. Kelly Sweppenhiser	2006	206
5. Elliott Erbe	2005	205
6. Robert Crumpler	2005	204
7. Jacoby Fields	2006	202
8. Elliott Erbe	2004	201
Matt Smith	2004	201
10. Kelly Sweppenhiser	2005	200

Games Played

1. Jacoby Fields	2004	55
Elliott Erbe	2005	55
B.T. Good	2005	55
Kelly Sweppenhiser	2005	55
Jacoby Fields	2006	55
B.T. Good	2006	55
Kelly Sweppenhiser	2006	55
8. Elliott Erbe	2004	54
Matt Smith	2004	54
Matt Smith	2005	54

Season Records-Pitching

Earned Run Average (Minimum 1.0 IP/G)

1. Percy Sensabaugh	1964	0.67
2. Steve Otwell	1970	0.89
3. Percy Sensabaugh	1965	1.04
4. Wilber Smith	1970	1.53
5. Jeff Gausepohl	1965	1.67
6. Bryan Augsburger	1983	1.87
7. John Pate	1971	1.91
8. John Taylor	1965	2.02
9. Dave Reid	1968	2.05
10. Billy Goodrich	1995	2.05

Most Strikeouts Per 9 Innings (Min. 1.0 IP/G)

1. Percy Sensabaugh	1964	14.17
2. George Armbruster	1988	12.60
3. Ian Ostlund	1998	10.80
4. Josh Spradlin	1998	10.17
5. Jerry Fresia	1969	9.82
6. Wilber Smith	1970	9.77
7. Jerry Fresia	1968	9.51
8. Grayson Craun	1998	9.49
9. Dave Reid	1968	9.41
10. Trey Barham	2006	9.35

Fielding Percentage

1. Billy Terry	1993	.993
2. Nate Shepperson	1994	.993
3. Chris Catanzaro	2000	.992
4. Robert Crumpler	2006	.992
5. Jon Wade	2003	.992
6. Chris Catanzaro	1999	.990
7. Kevin Thrift	1976	.989
8. Matt Griffin	1979	.989
9. Marlin Ikenberry	1993	.988
10. Stephen Parsons	2005	.988

Wins

1. Ian Ostlund	2000	11
2. Phil Hendrix	2003	7
Trey Barham	2006	7
Travis Smink	2006	7
5. Bryan Augsburger	1983	6
Duke Acors	2003	6
Jeff DeMara	2005	6
Jimmy Thoms	2005	6
9. Several Tied With		5

Fewest Walks Per 9 Innings (Min. 1.0 IP/G)

1. Ian Ostlund	2000	1.21
2. Jimmy Thoms	2005	1.81
3. Richard Sparks	1988	1.82
4. Merlin Ikenberry	1993	1.97
5. Dennis Lewin	1975	2.02
6. John Payne	1994	2.23
7. Phil Hendrix	2002	2.25
8. Phil Hendrix	2001	2.40
9. Mike Doczi	1989	2.41
10. Jimmy Thoms	2004	2.60

Chances

1. Robert Crumpler	2005	542
2. Robert Crumpler	2006	495
3. Jon Wade	2003	475
4. Billy Terry	1993	432
5. Chris Catanzaro	2001	429
6. Nate Shepperson	1996	427
7. Elliott Erbe	2002	397
8. Jon Wade	2004	394
9. Chris Catanzaro	1999	393
10. Chris Catanzaro	2000	391

Innings Pitched

1. Phil Hendrix	2003	97.2
2. Trey Barham	2006	94.1
3. John Payne	1993	93.0
4. J.J. Hollenbeck	2005	91.2
5. Duke Acors	2004	90.0
6. Danny Hughes	1996	89.1
7. Duke Acors	2003	88.0
8. Mark Airaghi	1982	87.2
9. Ryan Glynn	1995	86.2
W.G. Smith	1996	86.2

Games Started

1. Duke Acors	2004	17
2. Josh Owens	2001	16
Trey Barham	2006	16
4. Wes Barrow	1999	15
Chris Riley	1999	15
Duke Acors	2002	15
Phil Hendrix	2003	15
Duke Acors	2005	15
9. Duke Acors	2003	14
10. Six Tied With		13

Putouts

1. Robert Crumpler	2005	506
2. Robert Crumpler	2006	459
3. Jon Wade	2003	449
4. Billy Terry	1993	403
5. Nate Shepperson	1996	388
6. Chris Catanzaro	2001	380
7. Jon Wade	2004	375
8. Chris Catanzaro	1999	371
9. Chris Catanzaro	2000	360
10. Chris Catanzaro	1998	357

Saves

1. Ian Ostlund	1999	7
2. Merlin Ikenberry	1993	6
Phil Hendrix	2001	6
Jeff DeMara	2003	6
Jeff DeMara	2005	6
6. Ian Ostlund	2000	4
Jacoby Fields	2006	4
8. Richard Sparks	1989	3
Ryan Glynn	1993	3
Jay Adams	1997	3
J.J. Hollenbeck	2003	3

Complete Games

1. Mike Vela	1979	8
Mark Airaghi	1982	8
3. Glenn Ferguson	1986	7
W.G. Smith	1996	7
5. John Pate	1972	6
Mark Airaghi	1980	6
Mark Airaghi	1981	6
Bryan Augsburger	1984	6
Barry Johnson	1990	6
10. Several Tied With		5

Assists

1. Chad Rice	2006	186
2. Matt Smith	2004	163
3. Matt Smith	2005	159
4. David Groseclose	1992	154
5. David Groseclose	1993	149
6. Matt Smith	2003	145
7. Chris Cofer	1996	142
Jason Annis	2001	142
Shane Geisslinger	2006	142
10. David Groseclose	1994	141

Strikeouts

1. Percy Sensabaugh	1964	106
2. Trey Barham	2006	98
3. Ryan Glynn	1995	86
4. Phil Hendrix	2003	77
5. W.G. Smith	1996	75
6. Duke Acors	2003	74
7. Percy Sensabaugh	1965	71
8. Jeremy Harper	2003	70
Duke Acors	2004	70
10. Jay Adams	1995	69

Appearances

1. Jeff DeMara	2005	33
2. Phil Hendrix	2001	29
Jeff DeMara	2004	29
4. Merlin Ikenberry	1993	27
5. John Sloan	2001	25
Billy Goodrich	1992	24
7. Billy Goodrich	1994	23
Ian Ostlund	1999	23
Ian Ostlund	2000	23
Jimmy Thoms	2002	23

Double Plays Turned

1. Robert Crumpler	2005	52
2. Chris Cofer	1996	47
3. Nate Shepperson	1996	45
4. Robert Crumpler	2006	40
5. Matt Smith	2005	37
6. Chris Catanzaro	1999	36
Chad Rice	2006	36
8. Brian Adams	1992	35
9. David Groseclose	1995	33
10. David Groseclose	1992	31

Batting Average

1.	1999	.315
2.	2000	.307
3.	1987	.301
4.	1988	.296
5.	2006	.294
6.	1963	.294
7.	1986	.294
8.	1985	.292
9.	1983	.291
10.	1982	.291

Slugging Percentage

1.	1985	.491
2.	1988	.481
3.	1999	.475
4.	2000	.470
5.	1987	.465
6.	1989	.450
7.	1983	.450
8.	1986	.444
9.	1982	.435
10.	1960	.429

On-Base Percentage

1.	2000	.400
2.	1999	.397
3.	2006	.394
4.	1987	.387
5.	1985	.385
6.	1988	.379
7.	2005	.379
8.	1998	.375
9.	1989	.373
10.	1986	.372

Hits

1.	2006	.549
2.	2005	.541
3.	2004	.505
4.	2000	.504
5.	1999	.495
6.	1998	.461
	2003	.461
8.	2001	.452
9.	1997	.423
10.	2002	.420

Doubles

1.	2000	.111
2.	1998	.106
3.	2006	.105
4.	1999	.097
	2002	.097
6.	2004	.096
7.	2005	.094
8.	2001	.092
9.	1995	.085
10.	2003	.082

Triples

1.	2000	.17
2.	1994	.16
3.	1993	.14
4.	1992	.13
	1995	.13
6.	1983	.12
	1985	.12
8.	Six Tied With	.11

Home Runs

1.	1985	.56
2.	1988	.50
3.	1997	.48
4.	1999	.45
5.	1989	.44
6.	2000	.41
7.	2005	.39
8.	1987	.38
9.	1986	.37
10.	1996	.36
	2003	.36
	2004	.36

Runs Batted In

1.	2006	.324
2.	1999	.315
3.	2005	.311
4.	2000	.310
5.	2004	.278
6.	1998	.257
7.	1997	.252
8.	1988	.246
9.	2001	.244
10.	1995	.241

Total Bases

1.	2000	.772
2.	2005	.766
3.	1999	.747
4.	2006	.742
5.	2004	.731
6.	1998	.681
7.	2003	.669
8.	1997	.654
9.	1985	.647
10.	1988	.641

Runs

1.	2006	.376
2.	2000	.352
3.	2005	.343
4.	1999	.341
5.	2004	.330
6.	1998	.304
7.	1997	.302
8.	1988	.273
9.	1986	.271
10.	1995	.270

Walks

1.	2000	.231
2.	2005	.214
3.	2006	.210
4.	1997	.204
5.	2004	.195
6.	1985	.192
7.	1998	.186
8.	1995	.181
	1999	.181
10.	2003	.178

Stolen Bases

1.	1995	.98
2.	1992	.92
3.	2006	.86
4.	1994	.84
5.	2005	.80
6.	2004	.77
7.	1993	.69
8.	1963	.64
9.	1986	.63
10.	1987	.61

Hit By Pitch

1.	2006	.119
2.	2005	.71
3.	2004	.68
4.	2003	.61
5.	1997	.58
	1999	.51
7.	2001	.48
8.	1995	.45
9.	1998	.39
	2000	.39

At Bats

1.	2006	.1868
2.	2005	.1865
3.	2004	.1862
4.	2003	.1706
5.	2000	.1643
6.	2002	.1608
7.	1997	.1601
8.	1998	.1594
9.	2001	.1590
10.	1994	.1578

Games Played

1.	2004	.55
	2005	.55
	2006	.55
4.	2003	.52
5.	2002	.51
6.	1992	.50
	1994	.50
8.	1993	.49
	1998	.49
	1999	.49
	2000	.49

Season Records-Pitching

Earned Run Average

1.	1965	.1.96
2.	1966	.2.31
3.	1970	.2.31
4.	1961	.2.83
5.	1969	.2.98
6.	1962	.3.02
7.	1963	.3.38
8.	1964	.3.42
9.	1967	.3.54
10.	1968	.3.72

Earned Run Average (Aluminum Bat Era)

1.	1974	.3.83
2.	2006	.4.80
3.	1993	.4.94
4.	2005	.4.98
5.	2003	.5.14
6.	1995	.5.30
7.	1984	.5.46
8.	2004	.5.61
9.	1983	.5.66
10.	1987	.5.99

Wins

1.	2006	.30
2.	2005	.27
3.	2003	.24
4.	2004	.23
5.	1999	.22
6.	1994	.21
7.	1988	.20
	1993	.20
9.	1995	.19
	2000	.19

Innings Pitched

1.	2006	.482.0
2.	2005	.477.1
3.	2004	.476.1
4.	2003	.442.2
5.	1994	.401.1
6.	2000	.401.0
7.	2002	.400.1
8.	1997	.399.0
9.	1992	.398.0
10.	1993	.397.1
	1995	.397.1

Saves

1.	1993	.12
	2006	.12
3.	1999	.8
	2003	.8
	2005	.8
6.	1989	.6
	2001	.6
8.	Five Tied With	.5

Strikeouts

1.	1998	.356
2.	2003	.348
3.	2004	.335
4.	1995	.323
	2005	.323
	2006	.323
7.	1997	.300
8.	1994	.277
9.	2002	.276
10.	2000	.272

Most Strikeouts Per 9 Innings

1.	1998	.8.48
2.	1967	.8.42
3.	1964	.8.25
4.	1968	.7.68
5.	1995	.7.32
6.	1987	.7.08
7.	2003	.7.08
8.	1961	.7.00
9.	1965	.6.94
10.	1969	.6.79

Fewest Walks Per 9 Innings

1.	1977	.2.81
2.	1976	.3.22
3.	1958	.3.28
4.	1975	.3.56
5.	1978	.3.66
6.	1974	.3.89
7.	1981	.3.95
8.	1959	.4.03
9.	1979	.4.11
10.	1990	.4.53

Complete Games

1.	1971	.20
2.	1981	.18
3.	1979	.17
	1982	.17
	1986	.17
6.	1978	.16
7.	1972	.14
	1996	.14
9.	1983	.13
10.	Five Tied With	.11

Shutouts

1.	2002	.4
2.	1983	.3
	1984	.3
	2005	.3
5.	1965	.2
	1971	.2
	1972	.2
	1994	.2
	1998	.2
	2003	.2
	2006	.2

Fielding Percentage

1.	1993	.973
2.	2005	.963
3.	2006	.963
4.	2004	.959
5.	2003	.954
6.	1988	.952
7.	1995	.952
8.	1989	.949
9.	1994	.948
10.	1992	.945

Chances

1.	2006	.2160
2.	2005	.2159
3.	2004	.1998
4.	2003	.1930
5.	1994	.1859
6.	1992	.1848
7.	1997	.1838
8.	1995	.1827
9.	1993	.1801
10.	2001	.1788

Putouts

1.	2006	.1446
2.	2005	.1432
3.	2004	.1408
4.	2003	.1328
5.	1994	.1204
6.	2000	.1203
7.	2002	.1201
8.	1997	.1197
9.	1992	.1194
10.	1995	.1192
	1993	.1192

Assists

1.	2005	.647
2.	2006	.633
3.	1993	.560
4.	1994	.558
5.	1992	.553
6.	1995	.547
7.	1996	.516
8.	2001	.515
9.	2003	.513
10.	1997	.512

Double Plays Turned

1.	2005	.58
2.	1996	.54
3.	2006	.47
4.	1995	.43
	1999	.43
6.	1992	.41
7.	2004	.40
8.	2001	.39
9.	2000	.35
10.	1997	.33

Batting Average (Minimum 400 AB)

1. Chris Catanzaro (1998-01)	.356
2. Mike Lamore (1982-85)	.350
3. Phil Hubbard (1980-83)	.350
4. Kelly Sweppenhiser (2003-06)	.348
5. Greg Weddle (1983-86)	.328
6. Rob Holmes (1981-84)	.326
7. Robert Crumpler (2004-Present)	.321
8. Michael Goldman (1997-00)	.321
9. Ben Walker (1983-85,87)	.320
10. Eric Walker (1997-00)	.314

Slugging Percentage (Minimum 400 AB)

1. Greg Weddle (1983-86)	.633
2. Chris Catanzaro (1998-01)	.566
3. Andy Beasley (1987-90)	.565
4. Ben Walker (1983-85,87)	.554
5. Michael Goldman (1997-00)	.547
6. Bert Saunders (1982-85)	.545
7. Kelly Sweppenhiser (2003-06)	.544
8. Ryan Glynn (1993-95)	.543
9. John Parrott (1985-87,89)	.535
10. Rob Holmes (1981-84)	.531

On-Base Percentage (Minimum 400 AB)

1. Kelly Sweppenhiser (2003-06)	.457
2. Mike Lamore (1982-85)	.446
3. Chris Catanzaro (1998-01)	.439
4. Michael Goldman (1997-00)	.431
5. Franco Martin (1994-97)	.423
6. Andy Beasley (1987-90)	.421
7. Ben Walker (1983-85,87)	.412
8. Robert Crumpler (2004-Present)	.410
9. Phil Hubbard (1980-83)	.404
10. Rob Holmes (1981-84)	.404

Hits

1. Kelly Sweppenhiser (2003-06)	263
2. Chris Catanzaro (1998-01)	258
3. Louie Napoleon (1993-96)	218
Matt Smith (2002-05)	218
5. David Groseclose (1992-95)	206
6. Elliott Erbe (2002-05)	198
7. Scott Thompkins (1996-99)	189
8. Nate Shepperson (1994-97)	180
9. B.T. Good (2003-06)	177
10. Mike Lamore (1982-85)	175

Doubles

1. Chris Catanzaro (1998-01)	71
2. Jason Annis (2000-03)	50
3. Kelly Sweppenhiser (2003-06)	49
4. Louie Napoleon (1993-96)	47
5. Scott Thompkins (1996-99)	42
6. Michael Goldman (1997-00)	39
Elliott Erbe (2002-05)	39
8. Matt Smith (2002-05)	37
9. David Groseclose (1992-95)	36
Nate Shepperson (1994-97)	36
B.T. Good (2003-06)	36

Triples

1. Louie Napoleon (1993-96)	14
2. Ryan Glynn (1993-95)	9
3. Ed Pearson (1997-00)	8
Elliott Erbe (2002-05)	8
5. Terry Batts (1989-92)	7
David Groseclose (1992-95)	7
Stephen Johnson (1999-00)	7
8. Phil Hubbard (1980-83)	6
Bert Saunders (1982-85)	6
Ren O'Ferrall (1986-89)	6
Brian Adams (1990-93)	6

Home Runs

1. Greg Weddle (1983-86)	37
2. John Parrott (1985-87,89)	34
3. Scott Thompkins (1996-99)	32
4. Andy Beasley (1987-90)	31
Ryan Glynn (1993-95)	31
Kelly Sweppenhiser (2003-06)	31
7. Bert Saunders (1982-85)	30
8. Elliott Erbe (2002-05)	26
9. Franco Martin (1994-97)	25
Nate Shepperson (1994-97)	25
Michael Goldman (1997-00)	25
Chris Catanzaro (1998-01)	25

Runs Batted In

1. Chris Catanzaro (1998-01)	155
2. Scott Thompkins (1996-99)	149
Kelly Sweppenhiser (2003-06)	149
4. Greg Weddle (1983-86)	146
5. Elliott Erbe (2002-05)	137
6. Franco Martin (1994-97)	135
7. Ryan Glynn (1993-95)	126
8. Michael Goldman (1997-00)	125
9. Andy Beasley (1987-90)	115
10. Mike Lamore (1982-85)	111

Total Bases

1. Kelly Sweppenhiser (2003-06)	411
2. Chris Catanzaro (1998-01)	410
3. Scott Thompkins (1996-99)	331
Elliott Erbe (2002-05)	331
5. Louie Napoleon (1993-96)	326
6. Greg Weddle (1983-86)	324
7. Nate Shepperson (1994-97)	297
8. Michael Goldman (1997-00)	290
John Parrott (1985-87,89)	290
10. Franco Martin (1994-97)	287

Runs

1. Kelly Sweppenhiser (2003-06)	172
2. Chris Catanzaro (1998-01)	171
3. Gary Sibayan (1986-89)	166
4. David Groseclose (1992-95)	154
5. Scott Thompkins (1996-99)	149
6. Criss Finwood (1985-88)	136
7. B.T. Good (2003-06)	125
8. Franco Martin (1994-97)	123
9. Matt Smith (2002-05)	121
10. Elliott Erbe (2002-05)	119

Walks

1. Franco Martin (1994-97)	137
2. Kelly Sweppenhiser (2003-06)	122
3. Criss Finwood (1985-88)	96
4. Matt Smith (2002-05)	95
5. Chris Catanzaro (1998-01)	93
6. Andy Beasley (1987-90)	92
7. Scott Thompkins (1996-99)	90
8. Ryan Colvin (1998-01)	87
9. David Groseclose (1992-95)	86
10. Mike Lamore (1982-85)	84

Stolen Bases

1. David Groseclose (1992-95)	100
2. Gary Sibayan (1986-89)	92
3. B.T. Good (2003-06)	56
Donny White (1963-65)	56
5. Louie Napoleon (1993-96)	51
6. Ben Walker (1983-85,87)	42
7. Matt Smith (2002-05)	38
8. Ed Pearson (1997-00)	35
Terry Batts (1989-92)	35
10. Brian Adams (1990-93)	33

Hit By Pitch

1. B.T. Good (2003-06)	54
2. Kelly Sweppenhiser (2003-06)	41
3. Andy Barden (2000-03)	33
4. Jacoby Fields (2004-Present)	29
5. Robert Crumpler (2004-Present)	27
6. Michael Goldman (1997-00)	25
7. Scott Thompkins (1996-99)	23
8. Marlin Ikenberry (1992-95)	22
Franco Martin (1994-97)	22
10. Chad Rice (2004-Present)	21

At Bats

1. Kelly Sweppenhiser (2003-06)	756
2. Matt Smith (2002-05)	753
3. Louie Napoleon (1993-96)	739
4. David Groseclose (1992-95)	725
Chris Catanzaro (1998-01)	725
6. Elliott Erbe (2002-05)	707
7. Scott Thompkins (1996-99)	642
8. Brian Adams (1990-93)	623
9. Franco Martin (1994-97)	615
B.T. Good (2003-06)	615

Games Played

1. Elliott Erbe (2002-05)	208
2. Matt Smith (2002-05)	207
3. Kelly Sweppenhiser (2003-06)	203
4. David Groseclose (1992-95)	195
5. Louie Napoleon (1993-96)	191
6. Chris Catanzaro (1998-01)	190
7. Franco Martin (1994-97)	187
8. Scott Thompkins (1996-99)	186
9. B.T. Good (2003-06)	181
10. John Payne (1991-94)	180

Career Records-Pitching

Earned Run Average (Minimum 140 IP)

1. John Pate (1971-73)	2.95
2. Vern Beitzel (1969-72)	3.45
3. Bryan Augsburger (1982-85)	3.91
4. Jeff DeMara (2002-05)	3.93
5. J.J. Hollenbeck (2003-06)	4.79
6. Barry Johnson (1987-90)	4.92
7. John Payne (1991-94)	5.51
8. Phil Hendrix (2000-03)	5.58
9. W.G. Smith (1994-97)	5.69
10. Duke Acors (2002-05)	5.70

Wins

1. Ian Ostlund (1998-00)	16
2. Bryan Augsburger (1982-85)	13
Mike Doczi (1987-89,91)	13
Phil Hendrix (2000-03)	13
Josh Owens (2001-05)	13
Duke Acors (2002-05)	13
7. Glenn Ferguson (1984-87)	12
Todd Tilley (1986-89)	12
Jay Adams (1994-95,97-98)	12
Jeff DeMara (2002-05)	12
J.J. Hollenbeck (2003-06)	12

Innings Pitched

1. Duke Acors (2002-05)	319.0
2. Phil Hendrix (2000-03)	306.2
3. J.J. Hollenbeck (2003-06)	272.2
4. John Payne (1991-94)	259.2
5. Jimmy Thoms (2002-05)	257.0
6. Mark Airaghi (1980-83)	254.0
7. Todd Tilley (1986-89)	247.1
8. W.G. Smith (1994-97)	245.0
9. Marc Phillips (1991-94)	243.1
10. Mike Vela (1976-79)	233.2

Saves

1. Jeff DeMara (2002-05)	13
2. Ian Ostlund (1998-00)	11
3. Merlin Ikenberry (1992-95)	9
4. Phil Hendrix (2000-03)	7
5. Richard Sparks (1986-89)	6
Ryan Glynn (1993-95)	6
7. J.J. Hollenbeck (2003-06)	5
8. Jacoby Fields (2004-Present)	4
9. Five Tied With	3

Strikeouts

1. Duke Acors (2002-05)	245
2. Phil Hendrix (2000-03)	216
3. W.G. Smith (1994-97)	204
4. J.J. Hollenbeck (2003-06)	198
5. Jay Adams (1994-95,97-98)	193
6. Bryan Augsburger (1982-85)	187
7. Jeremy Harper (2000-03)	186
8. Percy Sensabaugh (1964-65)	177
Ryan Glynn (1993-95)	177
10. Ian Ostlund (1998-00)	161

Most Strikeouts Per 9 Innings (Min. 140 IP)

1. Ryan Glynn (1993-95)	8.78
2. Ian Ostlund (1998-00)	8.78
3. Bryan Augsburger (1982-85)	7.70
4. Josh Spradlin (1997-00)	7.54
5. Jay Adams (1994-95, 97-98)	7.54
6. W.G. Smith (1994-97)	7.49
7. Jeremy Harper (2000-03)	7.43
8. Billy Goodrich (1992-95)	7.19
9. Duke Acors (2002-05)	6.91
10. Jeff DeMara (2002-05)	6.86

Fewest Walks Per 9 Innings (Min. 140 IP)

1. Jimmy Thoms (2002-05)	2.56
2. Jeff DeMara (2002-05)	2.71
3. John Payne (1991-94)	2.88
4. Ian Ostlund (1998-00)	2.95
5. J.J. Hollenbeck (2003-06)	3.00
6. Phil Hendrix (2000-03)	3.29
7. Mike Doczi (1987-89,91)	3.56
8. Mark Airaghi (1980-83)	3.65
9. John Pate (1971-73)	3.94
10. Wes Barrow (1996-99)	3.95

Games Started

1. Duke Acors (2002-05)	61
2. Phil Hendrix (2000-03)	42
3. Todd Tilley (1986-89)	38
John Payne (1991-94)	38
5. Marc Phillips (1991-94)	37
6. Jeremy Harper (2000-03)	36
7. Mark Airaghi (1980-83)	34
Jimmy Thoms (2002-05)	34
9. Bryan Augsburger (1982-85)	33
Mike Vela (1976-79)	33

Complete Games

1. Mark Airaghi (1980-83)	24
2. Mike Vela (1976-79)	21
3. Bryan Augsburger (1982-85)	17
4. Vern Beitzel (1969-72)	16
5. John Payne (1991-94)	13
6. Todd Tilley (1986-89)	12
7. W.G. Smith (1994-97)	11
John Pate (1971-73)	11
9. Craig Jones (1977-80)	10
10. Glenn Ferguson (1984-87)	9

Appearances

1. Jeff DeMara (2002-05)	104
2. Billy Goodrich (1992-95)	83
3. Phil Hendrix (2000-03)	78
4. Merlin Ikenberry (1992-95)	77
Josh Owens (2001-05)	77
Jimmy Thoms (2002-05)	77
7. J.J. Hollenbeck (2003-06)	70
8. Brannon Howle (1996-99)	65
9. Josh Spradlin (1997-00)	64
10. Duke Acors (2002-05)	63

Fielding Percentage

1. Robert Crumpler (2004-Present)	.989
2. Jon Wade (2002-04)	.988
3. Chris Catanzaro (1998-01)	.986
4. Nate Shepperson (1994-97)	.984
5. Marlin Ikenberry (1992-95)	.981
6. Billy Terry (1990-93)	.981
7. Scott Thompkins (1996-99)	.980
8. Marshall Simpson (1987-90)	.978
9. Michael Goldman (1997-00)	.977
10. Andy Beasley (1987-90)	.975

Chances

1. Chris Catanzaro (1998-01)	1590
2. Nate Shepperson (1994-97)	1349
3. Robert Crumpler (2004-Present)	1071
4. Marshall Simpson (1987-90)	969
5. David Groseclose (1992-95)	964
6. Matt Smith (2002-05)	956
7. Jon Wade (2002-04)	927
8. Brian Adams (1990-93)	892
9. Scott Thompkins (1996-99)	855
10. Andy Barden (2000-03)	768

Putouts

1. Chris Catanzaro (1998-01)	1468
2. Nate Shepperson (1994-97)	1232
3. Robert Crumpler (2004-Present)	995
4. Marshall Simpson (1987-90)	892
5. Jon Wade (2002-04)	877
6. Scott Thompkins (1996-99)	747
7. Marlin Ikenberry (1992-95)	653
8. Andy Barden (2000-03)	633
9. Elliott Erbe (2002-05)	622
10. Andy Beasley (1987-90)	573

Assists

1. Matt Smith (2002-05)	581
2. David Groseclose (1992-95)	571
3. Brian Adams (1990-93)	445
4. Franco Martin (1994-97)	379
5. Jason Annis (2000-03)	361
6. Kelly Sweppenhiser (2003-06)	347
7. Chad Rice (2004-Present)	321
8. Jon Schott (1998-01)	278
9. Chris Cofer (1993-96)	276
10. Ben Bradford (1996-99)	263

Double Plays Turned

1. David Groseclose (1992-95)	114
2. Nate Shepperson (1994-97)	113
3. Robert Crumpler (2004-Present)	92
4. Brian Adams (1990-93)	90
5. Chris Cofer (1993-96)	82
6. Matt Smith (2002-05)	79
7. Chris Catanzaro (1998-01)	60
8. Chad Rice (2004-Present)	58
Shane Geisslinger (2005-Present)	58
10. Jon Wade (2002-04)	54

Louisville Slugger Freshman All-American

2003 Kelly Sweppenhiser, 3B
2006 Travis Smink, P

SoCon Freshman of the Year

1982 Mike Lamore, (Co-)
2003 Kelly Sweppenhiser, 3B

GTE/CoSIDA

Academic All-America

1984 Mike Lamore, 3rd Team
1996 Nate Shepperson, 3rd Team

Dick Howser Watch List

2006 Kelly Sweppenhiser

All Southern Conference

First Team

1959 Bill Drake, 2B
1960 Joe Gedro, OF
1961 Weldon Eddins, SS
1962 Gil Minor, C
1963 Donny White, SS
1964 Donny White, SS
..... Percy Sensabaugh, P
1965 Percy Sensabaugh, P
1969 Vern Beitzel, P
..... J.C. Hanks, 2B
..... Tim White, 3B
1977 Kelly Lombard, C
1980 Phil Hubbard, C
1982 Phil Hubbard, C
1983 Bryan Augsburger, P
1985* Greg Weddle, 1B
..... Chris Finwood, SS
1986* Greg Weddle, 1B
..... Gary Sibayan, 2B
1987* Gary Sibayan, 2B
..... Chris Finwood, SS
..... Ben Walker, DH
1988* Andy Beasley, C
..... Gary Sibayan, 2B
..... Chris Finwood, SS
1989 John Parrott, OF
1990 Andy Beasley, C
..... Marshall Simpson, 1B
1995 David Groseclose, SS
..... Ryan Glynn, OF
1999 Eric Walker, 3B
..... Scott Thompkins, DH
2000 Ian Ostlund, RP
..... Eric Walker, 3B

*-All-SoCon North Division

Second Team

1960 Weldon Eddins, SS
1962 Weldon Eddins, SS
..... Joe Gedro, P
1963 Joe Bush, OF
1964 Dee Hartman, OF
1965 Donny White, SS
1968 Tom Catlett, OF
..... Tim White, 3B
1984 Bryan Augsburger, P
..... Kelly Raber, 2B
..... Bert Saunders, OF
..... Greg Weddle, 1B
1989 Andy Beasley, C
..... Ren O'Ferrall, OF
1990 Barry Johnson, P
..... Brian Adams, 2B
1992 Ray Flowers, 1B
1993 Brian Adams, 2B

..... David Groseclose, SS
1994 Ryan Glynn, OF
..... David Groseclose, SS
..... Louie Napoleon, 2B
..... John Payne, DH
1995 Chris Cofer, 2B
2000 Michael Goldman, C
..... Stephen Johnson, DH

All Big South Conference

First Team

2005 Matt Smith, SS
..... Kelly Sweppenhiser, 3B
2006 Kelly Sweppenhiser, 3B

Second Team

2006 Trey Barham, P

SoCon All Tournament

1993 David Groseclose, SS
..... Louie Napoleon, 3B
1994 Louie Napoleon, OF
1995 Ryan Glynn, DH
1996 Nate Shepperson, 1B
2003 Jon Wade, 1B

SoCon Coach of the Year

1982 Donny White (Co-)
1988 Paul Maini
2003 Tom Slater

Big South Scholar-Athlete

2006 Kelly Sweppenhiser, 3B

Big South All-Academic

2004 Kelly Sweppenhiser, 3B
2005 Kelly Sweppenhiser, 3B
2006 Kelly Sweppenhiser, 3B

SoCon Player of the Week

1989 Andy Beasley (Mar. 12)
1994 Louie Napoleon (Mar. 2)
1996 Nate Shepperson (Week 7)
1999 Ed Pearson (Apr. 19)
2001 Chris Catanzaro (Apr. 23)

SoCon Pitcher of the Week

1994 Marc Phillips (Mar. 9)
..... Jay Adams (Mar. 29)
1997 Jay Adams (Apr. 7)
1998 Josh Spradlin (Mar. 9)

Big South Player of the Week

2005 Robert Crumpler (May 23)
2006 Clint Reed (Feb. 14, Co-)
..... Kelly Sweppenhiser (Feb. 21)
..... Robert Crumpler (Mar. 20)
..... Jacoby Fields (May 22, Co-)

Big South Pitcher of the Week

2004 J.J. Hollenbeck (Apr. 26)
2005 J.J. Hollenbeck (Mar. 28)
2006 Trey Barham (Mar. 20)

College Baseball Foundation

National Honor Roll

2006 Kelly Sweppenhiser (Feb. 21)
..... Travis Smink (Feb. 28)
..... Trey Barham (Mar. 21)

VaSID All-State

1984 Bryan Augsburger
1990 Marshall Simpson
..... Andy Beasley
1995 Ryan Glynn
..... David Groseclose (HM)
1996 Nate Shepperson
2000 Ian Ostlund
2006 Kelly Sweppenhiser

VMI Sports Hall of Fame

The following former baseball players have been inducted into the VMI Sports Hall of Fame:

Paul Caldwell '26 1972*
William Couper '04 1972*
Joseph Hatchet '25 1972*
Frank M. Page, Jr. '23 1972*
Charles Roberson '38 1972*
Robert Y. Conrad '05 1974
Claude "Red" Patton '50 1975
John L. Pitts '16 1975
Donny White '65 1975
Gilly Laughorn '31 1976
Cliff Heathcote '57 1977
Percy Sensabaugh '66 1977
Harold Williams '31 1978
Jack Tim White '69 1979
Weldon Eddins '62 1982
Phil Hubbard '83 1993
Greg Weddle '86 1997
Chris Finwood '88 2003
Ryan Glynn '95 2005

*-Indicates charter member of the Hall of Fame

Drafted Keydets

Player	Year	Round	Club
Rob Holmes	1980	47th	Minnesota Twins*
Andy Beasley	1989	17th	Oakland Athletics
Andy Beasley	1990	4th (112th overall)	St. Louis Cardinals
Mark Craft	1990	10th	Oakland A's
Jay Adams	1993	52nd	Cleveland Indians*
Marc Phillips	1994	32nd	Kansas City Royals
Ryan Glynn	1995	4th (94th overall)	Texas Rangers
David Groseclose	1995	22nd	Colorado Rockies
Nate Shepperson	1996	53rd	Pittsburgh Pirates
Jeremy Harper	2003	14th	Toronto Blue Jays
Andy Barden	2003	19th	Atlanta Braves
Phil Hendrix	2003	35th	Milwaukee Brewers
Duke Acors	2005	32nd	Pittsburgh Pirates
Kelly Sweppenhiser	2006	44th	Toronto Blue Jays
Tanner Biagini	2006	48th	Los Angeles Dodgers*

*-Drafted out of HS

When Was The Last Time VMI.....

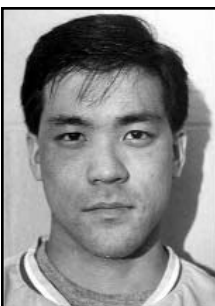
Scored 20 or more runs in a game	.21, vs. Coppin State, Feb. 17, 2006
Had 20 or more hits in a game	.22, vs. Coppin State, Feb. 17, 2006
Allowed 20 or more runs in a game	.21, vs. Hofstra, Feb. 13, 2005
Allowed 20 or more hits in a game	.21, at Auburn, Feb. 5, 2006
Shutout an opponent	vs. North Carolina A&T (5-0) May 13, 2006
Was shutout	vs. Coastal Carolina, May 8, 2006
Pitched back-to-back complete games	vs. Longwood, April 8 & 9, 2005
Hit back-to-back home runs	vs. Birmingham-Southern, April 2, 2005
Swept a series	vs. Brown, March 26-27, 2006
Swept back-to-back series	vs. Coppin State & vs. Lafayette, Feb. 17-19, 25-26, 2006
Swept a Conference series at home	vs. High Point (Big South), May 13-15, 2005
Swept a Conference series on the road	at Appalachian State (SoCon), May 3-4, 2003
Was swept in a Conference series at home	vs. Birm.-South. (Big South), April 1-3, 2005
Was swept in a Conference series on the road	at UNCA (Big South), April 28-30, 2006
Beat a Ranked Team	vs. #16 Winthrop, May 21, 2006
Won a Series Against a Ranked Team	vs. #16 Winthrop, May 19-21, 2006 (First Ever)

When Was The Last Time A Keydet.....

Hit a grand slam	Brandon Massenburg, vs. Lafayette, Feb. 29, 2004
Hit an inside-the-park home run	Matt Smith, vs. High Point, May 14, 2005
Hit two home runs in a game	Kelly Sweppenhiser, vs. Longwood, April 9, 2005
Hit home runs in consecutive at bats	Robert Crumpler, vs. William & Mary, April 5, 2005
Hit a walk-off home run	Kelly Sweppenhiser, vs. William & Mary, April 21, 2004
Had a walk-off hit	Kelly Sweppenhiser (1B), vs. North Carolina A&T, May 13, 2006
Had five hits in a game	B.T. Good, vs. vs. Radford, Apr. 15, 2006
Had seven RBI in a game	Robert Crumpler, vs. Fairfield, Mar. 7, 2005
Scored five runs in a game	Chad Rice, vs. Coppin State, Feb. 17, 2006
Hit for the cycle	Kelly Sweppenhiser, vs. Coppin State, Feb. 19, 2006
Stole home	Chad Rice (Double steal), vs. Norfolk State, March 22, 2006
Stole five bases in a game	Shane Geisslinger (5), vs. Richmond, April 12, 2006
Struck out 10 or more batters	Trey Barham (12), at James Madison, May 17, 2006
Pitched a complete game	J.J. Hollenbeck, vs. #16 Winthrop, May 20, 2006
Threw a shutout	J.J. Hollenbeck, vs. North Carolina A&T, May 13, 2006
Had a hitting streak of at least 15 games	Robert Crumpler, Feb. 23-March 22, 2005 (15)
Hit .400 in a season (Minimum 150 at bats)	Greg Weddle, .446, 1986

School Records

Most wins in a season	.30, 2006
Most consecutive wins	.9, Feb. 12-Mar. 4, 2006
Most consecutive home wins (single season)	.9, Feb. 26-Mar. 19, 2005
Most consecutive home wins (multiple seasons)	.12, May 1, 2005-March 4, 2006
Best record during a season	20-6, Mar. 27, 2006
Most losses in a season	.41, 2002
Most consecutive losses	.32, Mar. 21, May 1, 1981



Gary Sibayan is one of two Keydets to be named All-Conference in three different seasons and led the team with a .359 batting average in 1987.

Batting Champions

1950"Red" Patton333
1951Neal Petree305
1952Neal Petree252
1953Dave Crockett345
1954Not Available
1955Not Available
1956Bobby Ross400
1957Bobby Ross292
1958Bobby Ross305
1959Bobby Ross218
1960Joe Gedro375
1961Alex Azezapa245
1962Joe Gedro275
1963Donny White391
1964Donny White329
1965Donny White261
1966Don McMenmim284
1967Skip Harding302
1968Tom Catlett346
1969J.C. Hanks343
1970Doug Rowe234
1971Ken Wester220
1972Lou Dowdy325
1973Rod Brewer408
1974Kimo Wong300
1975Kavie Thrift308
1976Russell Puckett398
1977Kelly Lombard344
1978John Hobbs302
1979Mark Vasco316
1980Phil Hubbard416
1981Scott Gines313
1982Phil Hubbard424
1983Mike Lamore369
1984Kelly Raber343
1985Mike Lamore373
1986Greg Weddle446
1987Gary Sibayan359
1988Chris Finwood399
1989Ren O'Ferrall355
1990Marshall Simpson393
1991Ray Flowers289
1992Ray Flowers294
1993Brian Adams326
1994Louie Napoleon307
1995David Groseclose341
1996Nate Shepperson361
1997Franco Martin325
1998Chris Catanzaro346
1999Eric Walker376
2000Chris Catanzaro392
2001Chris Catanzaro335
2002Jason Annis308
2003Andy Barden318
2004Kelly Sweppenhiser367
2005Kelly Sweppenhiser370
2006Kelly Sweppenhiser350

-A-A-A-A-

ABELON, Patrick1997
 ACORS, Duke2002-05
 ADAMS, Brian1990-93
 ADAMS, Jay1994-95,97-98
 ADLEMAN, Jay1982
 AIRAGHI, Mark1980-83
 ALLEN, Ed1995-96
 AMOS, J.R.1963
 ANDREWS, Andy1976-79
 ANNIS, Jason2000-03
 ANTON, Mike2004-05
 ARMBRUSTER, George1986-89
 ATKINSON, R.1963-64
 AUGSBURGER, Bryan1982-85

-B-B-B-B-

BABER, Jon2002-05
 BACHMAN, Corey2004-06
 BARDEN, Andy2000-03
 BARGER, Steve1979-80
 BARMHAM, Trey2005-06
 BARKER, Danny1971
 BARKSDALE, Harry1972-75
 BARROW, Wes1996-99
 BASS, Stan1980,82-83
 BATTS, Terry1989-92
 BEASLEY, Andy1987-90
 BEITZEL, Vern1969-72
 BIGGS, John1970-71
 BINGLER, Travis.1995
 BIRAM, Walter1973
 BOOTH, Kevin2006
 BOWDEN, Ron1980-82
 BOWMAN, Michael2006
 BOYETTE, Ed1992-94
 BOYNTON, L.1964
 BRADFORD, Ben1996-99
 BRANNER, Wade1982-83
 BRECKENRIDGE, Jim1965-67
 BRENT, Bill1966-67
 BREWER, Rod1973
 BRIGGS, Don1977-79
 BRIGGS, Justin2000-03
 BROOKS, Chris2002-04
 BROOKS, Chris1998
 BROWN, Jere1989
 BROWN, M.W.1974
 BRYANT, Scott1982-85
 BUCHANAN, Chase2004-06
 BUCK, Glen1989,91-92
 BURGWYN, C.PE.1974
 BUNN, Chris1987-88
 BURGESS, Kenny1980-83
 BURRUS, Brian1993-94
 BURT, Mike1979-80
 BUSH, Joe1963-65
 BUSHEY, Art1968-69
 BUTLER, Larry1979

-C-C-C-C-

CAGE, Matt2001-04
 CARVER, Fred1968-70

CASHER, Ian2004-06
 CATANZARO, Chris1998-01
 CATHER, W.1963-64
 CATLETT, Tom1967-69
 CHAPMAN, Howard1966
 CHARLES, Johnny1989
 CHERNISKY, Chris1990-92
 CHICOLI, John1984-85
 CLEATON, Frank1968-70
 CLEMENTS, Michael2005
 COAKLEY, Mike2001-03
 COFER, Chris1993-96
 COLLETTI, Mike1983-86
 COLLIE, Dave1981
 COLVIN, Ryan1998-01
 CONQUES, Duane1963-65
 COOK, Rick1968-69
 CORLEY, Jerry1976
 CORRAO, Tony1997
 COULTER,1970
 COVINGTON, Tristen2003-04
 COWARDIN, Lew1968,70
 COX, Tim1980
 CRAFT, Mark1987-90
 CRANE, Stan1969,72
 CRAUN, Grayson1997-98,00
 CROCKER, Randy1967-69
 CRONE, Sandy1990-91
 CROTWELL, Henry1966
 CRUM, Kevin2006
 CRUMPLER, Robert2004-06

-D-D-D-D-

DANIELS, L.C.1974
 DARIN, Joe2000
 DARNELL, Dan1972-75
 DAVIES, Jeff1978-80
 DAVIS, Brad1997
 DAVIS, Jaime2005
 DAVIS, Paul1979-80
 DAVIS, Phil1967
 DeLEO, W.T.1963
 DeMEO, L.J.1974
 DeWATERS, Jerry1972
 DEARMAN, Andy1973
 DeMARA, Jeff2002-05
 DI DIO, Alex2005
 DIETRICH, Kris1995-96
 DIXON, David1996-98
 DOCZI, Mike1987-89,91
 DOW, Frank1982-84
 DOWDY, Louis1971-72,74
 DOWNS, David1989,91
 DUANE, Harley1965-66
 DUNLAP, Chase2005
 DURHAM, Brian1985-86

-E-E-E-E-

EARLE, R.A.1963
 EAST, Eric1997-00
 EDEN, Mike1981-82
 EDWARDS, Matt2006
 ELLIOT, John2001
 ERBE, Elliott2002-05

EVANS, Chad1991

-F-F-F-F-

FERGUSON, Glenn1984-87
 FIELDS, Jacoby2004-06
 FINWOOD, Criss1985-88
 FITCHETT, Doug1974-76
 FLOWERS, Ray1991-93
 FRAZIER, Randle1971
 FRESIA, Jerry1967-69
 FRICK, Ken1966
 FRIEND, John1979-82
 FRISHKORN, Jim1978-80
 FRISKI, Steve1968-70
 FRITZ, Dan1979-80

-G-G-G-G-

GALLEO, Darren1986-89
 GARNETT, Johnny1979
 GATES, Randy1975-77
 GAUSEPOHL, Jeff1963-65
 GEISSLINGER, Shane2005-06
 GENTILE, Tony1967-68
 GINES, Scott1980-83
 GLOVER, John1986-89
 GLYNN, Ryan1993-95
 GOLDMAN, Michael1997-00
 GOOD, B.T.2003-06
 GOODE, John2004-06
 GOODRICH, Billy1992-95
 GRAHAM, Chris1991
 GREGG, Jim1965-66
 GREGORY, Bruce1968
 GRIFFIN, Matt1977-80
 GRIFFIN, Ryan1992-93
 GROSECLOSE, David1992-95

-H-H-H-H-

HACKEMEYER, Denny1977-78
 HADRA, Jon2001-04
 HAINES, Andrew2005-06
 HAMLET, Dick1968
 HANEY, Drew1993-96
 HANKS, J.C.1968-70
 HARDING, Skip1967-68
 HARDY, Bill1975-78
 HARPER, Jeremy2000-03
 HARRELL, Wayne1970-72
 HARRISON, Romando1994-95
 HARTMAN, Dee1965-66
 HAVELIN, M.A.1974
 HAVIRD, Ley1987,89-90
 HAYDEN, Thomas2006
 HAYES, Grant1990
 HAYES, R.E.1974
 HAZELWOOD, Mark1991-94
 HEINE, Rick1985-86
 HELMS, Heith1996-97
 HENDERSON, Chris2006
 HENDRIX, Phil2000-03
 HENKEL, Bobby1976-78
 HERMON, G.R.1963
 HESS, Rick1971
 HIGHTOWER, Dick1963-65

HILLER, Steve1981-84
 HINES, B.1963-64
 HINES, Doug1973
 HINKEL, Bob1965-67
 HOBBS1978
 HOLLENBECK, J.J.2003-06
 HOLLOWAY, Donnie1990-92
 HOLMES, Rob1981-84
 HOLMES, Wilt1976
 HOLT, John1966
 HOWLE, Brannon1996-99
 HUBBARD, Phil1980-83
 HUCKABEE, Jeff1971-74
 HUDGINS, Matt2003-04
 HUGHES, Abe1999
 HUGHES, Danny1996-97
 HUNT, Wayne1994
 HUNTER, R.1964
 HUPP, W.T.1974
 HUTHWAITE, Doug1971

-I-I-I-I-

IKENBERRY, Marlin1992-95
 IKENBERRY, Merlin1992-95
 ISAACS, Garland1973,75

-J-J-J-J-

JANNUSCH, Mike1988-90
 JEFFERSON, Larry1970-72
 JOHNSON, Barry1987-90
 JOHNSON, Stephen1999-00
 JONES, Craig1977-80
 JONES, Jeff1999
 JORDAN, John1988
 JUDD, Seth1988-89

-K-K-K-K-

KASPER, Kelly1989-91
 KASS, Matt1998
 KELLY, Mike1988
 KELLY, Billy1992-93
 KENNEDY, Zach2001-04
 KENT, Allen2001-02
 KIELTY, Tim1985
 KIELY, Pat1988,90-91
 KING, Curtis1971
 KING, Orville1972
 KIRK, J.B.1974
 KITCHEN, Dale1972
 KITCHEN, James1971
 KOKOLIS, Pete1995-96
 KURTZ, Rick1990

-L-L-L-L-

LADD, Bob1967
 LAMORE, Mike1982-85
 LANDBERG, Michael1997-99
 LANIER, Phil1966-67
 LAWSON, Andrew2000-01
 LEAKE, Matt2002
 LEE, Mark1979
 LEGG, Josh2004-05
 LEGGETT1978
 LEVENSON, Jeff1981

All-Time Roster (1963-2006)

LEWIN, Dennis1972-75
 LIFFICK, Matt2001-04
 LITTLE, Charles1971-74
 LITWIN, Richard2002-06
 LOCHER, John1979
 LOMBARD, Kelly1976-79
 LONG, Jon1997-99
 LOUGHRIDGE, Billy1963-65
 LYLES, Willie1999-02
 LYNCH, Henry2002-03

-M-M-M-M-M-

MACKEY, Chris1993-94
 MAJOR, Jason2003-04,06
 MALESKI, Mike2003-04
 MALLON, Jim1973-74
 MAINI, Paul1964
 MANIS, Mike1968
 MAROHN, Chip1976-77
 MARSHALL, Howard1967
 MARTIN, Franco1994-97
 MARTIN, Peyton1994
 MARTINSON, Cody1999
 MASSENBURG, Brandon2003-05
 MASSIE, B.1974
 MAURER, Jim1963-65
 MAYS1970
 McADAMS, Ryan1990
 McALLISTER, Kenny1981-83
 McCLOSKEY, Joe1983-86
 McGINNIS, Tommy1983-86
 McKAIN, R.1964
 McMENAMIN, Don1965-67
 MICHAELS, Glenn1965-66
 MIHALIK, Tom1975-77
 MIKULA, Ned1971
 MILLIGAN, Ron1976
 MINEY, Brendan1977-80
 MINOR, Gil1963
 MINOR Jr., Gil1990-91
 MITCHELL, Ryan1997-99
 MONTANO, Dave1981
 MOORE, Scott1990
 MOORE, Dale1994-97
 MORGAN, Allen1973
 MORGAN, Hank1996-97
 MORRIS, Kyle1999
 MOTLEY, Sam1981
 MULKEY, Travis2005-06
 MUNSEY, J.M.1974
 MYERS, M.J.1974

-N-N-N-N-N-

NAPOLEON, Louie1993-96
 NAWROCKI, Phil1996-97
 NEHLS, Richard1978-79

-O-O-O-O-O-

O'BOOK, Jimmy1979
 O'FERRALL, Patrick1989-92
 O'FERRALL, Ren1986-89
 ONOFREI, Matt1996
 OSTLUND, Issac2004,06
 OSTLUND, Ian1998-00

OTWELL, Steve1970-71
 OWENS, Josh2001-05

-P-P-P-P-P-

PADGETT, Oscar1970-71
 PAGONES, Jim1970
 PALMER, Steve1985
 PARKER, R.1964
 PARKER, Read1997
 PARROTT, John1985-87,89
 PARSONS, Stephen2005
 PATE, John1971-74
 PAULETTE, Bill1967-69
 PAULETTE, Will2002-05
 PAULS, Phil1966
 PAYNE, John1991-94
 PEARSON, Ed1997-00
 PEDIGO, Hank1967-68
 PENNINGTON, Ken1967-68
 PERRIN, Mark1976-77
 PHELPS, John2006
 PHELPS, Mike1991-93
 PHILLIPS, David1982-84
 PHILLIPS, Marc1991-94
 PINGREE, Jim1983
 PLOTT, Harold1971-72
 PORTER, Brandon1994
 PORTER, Robin1965-66
 POULOS, Matt1999-00
 POWELL1978
 POWROZNIK, Travis1996-97
 PREDDY, Rob1979-82
 PROCISE, David1992-93
 PROSSER, John1965
 PUCKETT, Russell1975-77
 PULLEY, Tom1984

-R-R-R-R-R-

RABER, Kelly1982,84
 RADLE, Tom1980
 RAMSEY, Matt2001
 RAND, Ben2001-03
 REED, Don1964-66
 REED, Klint2005-06
 REEDER, K.R.1963
 REID, Bill1967
 REID, Dave1968-69
 REIDEL, Leonard1972,74
 REILLY, John1990-91
 REINARD, Bruce1976-79
 RHODES, Trey1987-90
 RICE, Chad2004-06
 RIDLEY, Thomas1972-74
 RILEY, Chris1998-01
 RILEY, Rob1998-01
 ROBB, Jack1967-68
 ROBERTS, Jeff1996-98
 ROBERTS, Michael2006
 ROBINSON, Jay1993
 RODGERS, Robert1980
 RODRIGUEZ, E.D.1974
 ROLAN, Louis1979-80
 ROSS, Donnie1973-74
 ROUNDTREE, Jim1966-67

ROWE, Doug1969-71
 ROYSTON, J.R.2001-04
 RUSSELL, Sandy1981

-S-S-S-S-S-

SADLER, Mike1969
 SAMUELSON, Keith1981
 SANDRIDGE, Brian2006
 SANFORD, John1975-76
 SANFORD, Robert1975-77
 SAUNDERS, Bert1982-85
 SAVAGE1978-79
 SCHENK, Joey1992-95
 SCHMAUS, Charlie1965-67
 SCHOTT, Jon1998-01
 SEAWELL, Sean2004
 SECRIST, Greg1985
 SELBY, Field1971-72
 SELDON, Greg1974-75
 SENSABAUGH, Percy1964-65,67
 SHARP, David1999-00
 SHEPPERSON, Nate1994-97
 SHU, Rod1968-70
 SIBAYAN, Gary1986-89
 SIMPSON, Marshall1987-90
 SJOLUND, Karl1983-86
 SLATER, Tom1987-90
 SLOAN, John1999-01
 SMILEY, Jeff1983-86
 SMINK, Travis2006
 SMITH, Dan1995-97
 SMITH, Matt2002-05
 SMITH, Thane2004-05
 SMITH, Wilber1969-70
 SMITH, Will2005-06
 SMITH, W.G.1994-97
 SNEAD, Lenny1976
 SNOW, Randy1968-71
 SNOW, Scott1974-77
 SPARKS, Richard1986-89
 SPRADLIN, Josh1997-00
 SPRIETSMA, Charles1991
 STABLES, Bruce1986
 STEGEMERTEN, Rick1970-71
 STONE, Allen1988-91
 STONE, Richard1985-87
 STRAIN, Billy1990-91
 SULLIVAN, Dave1994-96
 SULLIVAN, Shane1983-84
 SWEIGART, Marlin1963-65
 SWEPPENHISER, Kelly2003-06
 SWIENCINSKI, Brian1986-88

-T-T-T-T-T-

TAVENNER, James1988-91
 TAYLOR, John1965-66
 TERRY, Billy1990-93
 TERRY, Ruben1965-67
 THOMAS, John1968
 THOMPSON, Scott1996-99
 THOMS, Jimmy2002-05
 THRIFT, Kevin1973,75-76
 THUJO, K.Y.1974
 TILLEY, Todd1986-89

TOGNOLI, Chris1986-87
 TUJO, Chris1992-94
 TURNAGE, Brian1992-95
 TURNER1984
 TYLER, David1983-84

-U-U-U-U-U-

UPHAM, Brent2004
 UPTON, Phil1973

-V-V-V-V-V-

VAN ES, Eddie2006
 VARNEY, Gary1974-76
 VASCO, Mark1979-81
 VELA, Mike1976-79
 VLASS, Barry1973

-W-W-W-W-W-

WADE, Jon2002-04
 WALKER, Ben1983-85,87
 WALKER, Eric1997-00
 WALTON, R.S.1963
 WARD, Shawn1996
 WEDDLE, Greg1983-86
 WELLS, Greg1999
 WERTZ, Brent1988
 WESTER, Ken1969-72
 WHARTON, Kemper1981-84
 WHISENANT, H.A.1963
 WHITE, Donny1964-65
 WHITE, J.J.1963
 WHITE, Jack1967
 WHITE, Joe1975-76
 WHITE, Tim1968-69
 WHITFORD, T.W.1963
 WHITT, E.1964
 WILLIAMS, Jay1980-82
 WILLIAMS, Terrell1973-74
 WILLIAMS, Timmy1992,94
 WILLIAMS, Warren1990-93
 WILSON, Brent1985
 WILSON, Jonathan2003-04
 WIMMER, Allan2003-04
 WIMMER, Chris2005
 WONG, Michael1972-75
 WOOD, Daniel2006
 WOOD, D.T.1984-87
 WOODS, Scott1973-74
 WOOLWINE, Andy1980-82
 WORKMAN, Jim1963-65
 WYRICK, Scott1985

-Y-Y-Y-Y-Y-

YATES, Jeff1975,77-78
 YATES, John1996-99
 YODER, A.J.2006
 YOUNG, Billy1975-78
 YOUNG, Robert1965-67

1951

1-20, 0-12 SoCon

Coach: Frank Summers

M20	at Camp Lejeune Marines	L	0-16
M23	at Camp Lejeune Marines	L	1-11
M24	at Cherry Point Marines	L	3-9
A7	at Roanoke	L	1-4
A13	Michigan	L	3-22
A14	Roanoke	W	6-1
A17	*Richmond	L	1-13
A18	at Virginia	L	2-12
A21	*George Washington	L	2-14
A25	*at Virginia Tech	L	0-9
A26	at Quantico Marines	L	1-25
A27	*at George Washington	L	7-20
A28	*at Maryland	L	2-12
M2	*West Virginia	L	2-4
M2	*West Virginia	L	6-9
M4	*William & Mary	L	10-29
M7	*Maryland	L	3-7
M11	*at Richmond	L	3-5
M12	*at William & Mary	L	3-5
M16	*Virginia Tech	L	1-16
M18	Virginia	L	2-7

*-Denotes Southern Conference Game

1952

1-13, 1-8 SoCon

Coach: Vince Ragunas

Maine	L	10-11
*at Richmond	L	5-11
*at William & Mary	L	1-3
*George Washington	L	12-18
*Virginia Tech	L	2-3
at Virginia	L	5-12
*William & Mary	W	9-8
Hampden-Sydney	L	2-9
at Hampden-Sydney	L	4-21
Virginia	L	2-9
*West Virginia	L	4-8
*West Virginia	L	1-7
*Richmond	L	4-5
*at Virginia Tech	L	1-2

*-Denotes Southern Conference Game

1953

7-7, 4-4 SoCon

Coach: Chuck Noe

Long Island	L	7-10
Long Island	W	8-7
Ithaca	L	5-6
*George Washington	L	1-19
Virginia	L	1-6
*George Washington	W	11-10
*Maryland	L	3-5
Virginia Commonwealth	W	19-1
*Maryland	L	0-6
Hampden-Sydney	W	13-7
*Virginia Tech	W	3-1
*William & Mary	W	8-6
*Richmond	W	3-2
*Richmond	L	2-4

*-Denotes Southern Conference Game

1954

12-6, 6-4 SoCon

Coach: Chuck Noe

A3	Washington (Md.)	W	25-5
A6	Bridgewater	W	7-4
A9	*George Washington	W	6-4
A22	Maryland	L	7-13
A24	*West Virginia	L	3-5
A26	Virginia Commonwealth	W	20-3
A28	*Virginia Tech	L	2-5
A30	*Richmond	L	5-8
M1	*William & Mary	W	25-3
M5	*William & Mary	W	19-2
M6	*Richmond	W	11-9
M8	*Davidson	W	12-1
M10	*George Washington	L	6-9
M12	Virginia	L	3-7
M17	*Virginia Tech	W	5-3
M21	Virginia	W	7-5

M22	Lynchburg	W	10-4
M25	Lynchburg	W	9-2

*-Denotes Southern Conference Game

1955

12-8, 6-7 SoCon

Coach: Chuck Noe

*Furman	W	3-2
Virginia Commonwealth	W	5-4
Salem	W	7-5
Salem	W	6-3
*at Richmond	L	0-8
*William & Mary	L	13-14
Virginia Commonwealth	W	7-2
Virginia	W	6-5
*West Virginia	L	0-11
*West Virginia	L	4-5
West Virginia Tech	W	14-13
*William & Mary	W	9-8
*George Washington	W	8-6
*Virginia Tech	W	9-8
*Richmond	L	14-16
*Davidson	W	6-1
*Virginia Tech	L	3-9
*The Citadel	W	10-4
*The Citadel	L	3-17
Virginia	L	1-2

*-Denotes Southern Conference Game

1956

12-10, 7-7 SoCon

Coach: Jack Null

Michigan State	L	3-6
*The Citadel	L	2-7
*The Citadel	W	8-4
Akron	W	8-7
*Davidson	W	9-0
*Davidson	W	5-4
*William & Mary	L	3-6
*Richmond	L	3-7
*Virginia Tech	L	2-3
Hampden-Sydney	L	12-16
*William & Mary	W	4-2
*George Washington	L	1-11
Hampden-Sydney	W	16-13
*West Virginia	W	6-5
*West Virginia	W	7-4
*George Washington	L	2-16
Virginia	W	8-5
*Richmond	W	8-1
*Virginia Tech	L	5-11
Lynchburg	W	10-0
Lynchburg	W	7-5
Virginia	L	2-4

*-Denotes Southern Conference Game

1957

8-13, 4-6 SoCon

Coach: Jack Null

M25	Virginia Commonwealth	L	5-6
M26	Cornell	L	6-16
M27	Cornell	W	5-3
M28	Cornell	L	1-9
A2	Virginia	L	0-2
A6	*Davidson	W	3-0
A6	*Davidson	L	2-9
A10	*Virginia Tech	W	8-1
A12	*George Washington	L	5-10
A13	Pittsburgh	L	3-8
A13	Pittsburgh	W	11-9
A27	Virginia	L	4-10
M1	*Richmond	L	1-2
M2	*William & Mary	W	3-1
M4	*George Washington	L	7-11
M7	*at Richmond	L	1-21
M8	*William & Mary	W	7-0
M10	Randolph-Macon	L	3-7
M11	Marshall	W	9-3
M15	*Virginia Tech	L	2-4
M18	Lynchburg	W	11-1

*-Denotes Southern Conference Game

1958

4-12, 2-8 SoCon

Coach: Jack Null

Quantico Marines	L	3-10
Quantico Marines	W	8-4
Hampden-Sydney	L	1-9
*William & Mary	W	9-1
*Richmond	L	3-9
Virginia	W	13-5
*The Citadel	L	3-5
*The Citadel	L	2-7
Hampden-Sydney	L	2-17
*Davidson	L	7-10
*Davidson	L	4-9
*William & Mary	W	11-0
*at Richmond	L	1-10
Navy	L	2-12
*George Washington	L	0-10
*George Washington	L	1-18

*-Denotes Southern Conference Game

1959

5-11, 5-10 SoCon

Coach: Weenie Miller

*Davidson	L	1-6
*Davidson	W	6-4
*Virginia Tech	W	3-2
*Furman	L	5-7
*Furman	L	7-8
*The Citadel	L	0-11
*The Citadel	L	0-4
*West Virginia	W	4-3
*West Virginia	W	4-3
*William & Mary	W	2-1
*George Washington	L	0-18
Hampden-Sydney	L	4-14
*William & Mary	L	2-4
*at Richmond	L	3-6
*George Washington	L	3-13
*Virginia Tech	L	9-12

*-Denotes Southern Conference Game

1960

6-8, 5-8 SoCon

Coach: Weenie Miller

*George Washington	W	15-8
Virginia	W	17-6
*Richmond	L	2-15
*Virginia Tech	L	0-8
*Furman	L	4-5
*Furman	L	8-10
*William & Mary	W	10-4
*The Citadel	L	2-9
*The Citadel	W	4-3
*William & Mary	W	6-3
*at Richmond	L	8-10
*Virginia Tech	L	4-10
*West Virginia	L	1-2
*West Virginia	W	6-3

*-Denotes Southern Conference Game

1961

7-7, 6-6 SoCon

Coach: Charlie McGinnis

Colgate	W	6-4
Virginia	L	3-8
*The Citadel	W	3-1
*The Citadel	L	3-9
*Richmond	L	0-5
*William & Mary	W	5-1
*George Washington	W	11-2
*Davidson	W	4-1
*Davidson	L	1-5
*Furman	W	2-0
*Richmond	L	2-4
*Virginia Tech	W	3-2
*West Virginia	L	1-2
*West Virginia	L	2-5

*-Denotes Southern Conference Game

1962

8-7, 7-7 SoCon

Coach: Charlie McGinnis

*Davidson	W	2-0
-----------	---	-----

All-Time Results

*Davidson	W	3-1
*William & Mary	L	5-7
*Richmond	L	4-5
*Virginia Tech	W	8-7
*West Virginia	L	1-2
*West Virginia	L	5-8
*Virginia Tech	W	4-0
Virginia	W	7-1
*The Citadel	W	3-2
*The Citadel	L	0-6
*George Washington	W	7-3
*George Washington	W	3-1
*William & Mary	L	1-4
*at Richmond	L	0-13

*-Denotes Southern Conference Game

1963

14-11, 7-7 SoCon

Coach: Charlie McGinnis

	at West Georgia	W	4-3
	at West Georgia	L	1-2
	at Oglethorpe	W	4-1
	at Presbyterian	L	6-8
	at Presbyterian	W	6-3
	*at The Citadel	L	0-5
	*at The Citadel	W	7-5
	at St. Andrews	W	9-2
A4	Bridgewater	W	23-8
A8	*Davidson	W	4-3
A8	*Davidson	W	9-4
	Old Dominion	L	1-6
	St. Andrews	W	18-6 (7)
	*William & Mary	W	6-3
	Georgetown	W	5-0
	*George Washington	L	3-4
	*Virginia Tech	L	4-5
	Virginia	L	1-12
	*Virginia Tech	L	3-4
	*Richmond	L	3-4
	*William & Mary	W	6-5
	*George Washington	W	6-1
M14	*Richmond	W	4-2
M18	*at West Virginia	L	4-5
M18	*at West Virginia	L	2-7

*-Denotes Southern Conference Game

1964

11-12-1, 5-9 SoCon

Coach: Charlie McGinnis

M27	Bucknell	W	4-0
M28	Bucknell	W	3-1
M30	at Mercer	T	2-2 (11)
A1	at Georgia	L	1-12
A1	at Georgia	L	5-11
A2	at Presbyterian	W	4-0
A3	at Presbyterian	W	4-0
A3	at Presbyterian	W	19-4 (6)
A9	Rhode Island	W	3-2
A11	*West Virginia	L	2-3
A11	*West Virginia	L	2-9
A15	Old Dominion	L	1-4
A17	*William & Mary	W	8-3
A21	*Virginia Tech	W	4-2
A24	*at William & Mary	W	6-4
	*at Richmond	W	9-4
M2	*The Citadel	L	0-1 (11)
M2	*The Citadel	W	5-3
M7	*at Davidson	L	3-4
M7	*at Davidson	L	1-7
M11	*at Virginia Tech	L	6-8
M13	*Richmond	L	0-4
M17	*George Washington	L	3-8
M17	*George Washington	L	4-9

*-Denotes Southern Conference Game

1965

15-9, 8-6 SoCon

Coach: Charlie McGinnis

	\$vs. Colby	W	5-2
	\$vs. Rollins	W	5-3
	\$vs. Princeton	L	3-6
	\$vs. Colby	W	6-2
	\$at Rollins	L	2-3
	\$vs. Princeton	L	3-6

	*at The Citadel	L	1-4
	*at The Citadel	W	3-2
	at St. Andrews	W	3-2
	*at William & Mary	W	3-1
	*at Richmond	L	6-9
A14	Castleton State	W	4-0
A16	*William & Mary	W	6-1
A17	Marietta	W	6-5
A20	*Virginia Tech	W	2-1
A29	Virginia	W	3-2
M1	*Davidson	W	1-0
M1	*Davidson	W	3-0
M5	*at Virginia Tech	L	?-6
M10	*Furman	L	0-1
M10	*Furman	L	0-7
M12	*Richmond	W	3-2
M14	*at West Virginia	W	7-3 (13)
M14	*at West Virginia	L	1-3

\$-Game Played at Winter Park, Fla.-Rollins College Tournament

*-Denotes Southern Conference Game

1966

10-13, 6-10 SoCon

Coach: Fred Kelly

M25	*at Davidson	L	5-6
M25	*at Davidson	W	2-1
A6	Castleton State	W	19-7
A8	*William & Mary	L	3-7
A11	Marietta	W	6-0
A11	Marietta	W	7-2
A16	*George Washington	L	2-9
A16	*George Washington	W	1-0 (8)
A20	Virginia Tech	L	0-4
A23	*The Citadel	W	3-2
A23	*The Citadel	W	1-0
A25	*East Carolina	L	0-7
A25	*East Carolina	L	0-5
M3	*at William & Mary	L	0-4
M4	*at Richmond	L	2-3
M4	*at Richmond	W	2-1
M6	Old Dominion	W	6-5 (13)
M10	at Virginia Tech	L	5-6 (10)
M12	*at Furman	W	2-1
M12	*at Furman	L	2-4
M14	*West Virginia	L	2-5
M14	*West Virginia	L	1-4
M17	at Virginia	L	6-12

1967

9-11, 7-9 SoCon

Coach: Fred Kelly

M24	*at William & Mary	L	3-8
A8	*Davidson	W	10-0
A8	*Davidson	W	12-2
A9	*William & Mary	W	4-2
A12	Virginia	W	2-0
A15	*at East Carolina	L	0-13
A15	*at East Carolina	L	0-6
A19	*at Richmond	L	3-7
A22	*at West Virginia	L	0-3
A22	*at West Virginia	L	0-2
A29	*Furman	W	6-3
A29	*Furman	W	7-6
M2	Old Dominion	L	5-7
M4	Virginia Tech	W	5-4 (11)
M6	*at The Citadel	L	2-8
M6	*at The Citadel	W	5-0
M10	*Richmond	W	6-2
M13	*at George Washington	L	0-1
M13	*at George Washington	L	3-5
M18	at Virginia Tech	L	0-4

*-Denotes Southern Conference Game

1968

7-8, 3-5 SoCon

Coach: Chuck Roys

A5	Marshall	W	7-5
A5	Marshall	L	1-4
A6	*at Richmond	W	5-4
A10	*at West Virginia	L	1-6
A10	*at West Virginia	L	2-3
A15	*William & Mary	L	4-5
A15	*William & Mary	L	0-3

A19	Old Dominion	W	10-9
A19	Old Dominion	W	6-4
A23	Emory & Henry	W	9-2
A27	*George Washington	W	3-2
A27	*George Washington	W	7-4
M7	*Richmond	L	1-4
M10	at Virginia Tech	L	2-14
M16	Virginia Tech	L	2-4

*-Denotes Southern Conference Game

1969

10-12, 8-7 SoCon-Championship Finalists

Coach: Chuck Roys

M22	*at William & Mary	L	6-7
M22	*at William & Mary	L	1-3
M31	*at Furman	L	0-7
A1	*at Davidson	L	8-11
A7	at Virginia	L	1-6
A11	at Virginia Tech	L	3-6
A12	*William & Mary	W	7-4
A12	*William & Mary	L	3-8
A15	*at George Washington	L	1-6
A15	*at George Washington	W	4-1
A20	*The Citadel	W	6-5
A22	*George Washington	W	3-2
A22	*George Washington	W	2-1
A25	Virginia Tech	W	8-6
A27	*East Carolina	W	8-6
A27	*East Carolina	L	2-5
	Old Dominion	L	1-2
M2	*Richmond	W	2-0
M2	*Richmond	W	2-0
M15	#William & Mary	W	5-3 (13)
M16	%Furman	L	2-7
M17	%Furman	L	4-5

*-Denotes Southern Conference Game

#-SoCon Northern Division Playoff Game- Played in Colonial Heights, Va.

%-Denotes SoCon Championship Finals- Played in Fort Eustis, Va.

1970

6-13, 4-9 SoCon

Coach: Tom Sawyer

	Bucknell	W	4-3
	*Richmond	W	2-0
	*Richmond	W	2-1
	Old Dominion	L	0-1
	Old Dominion	W	2-1
	*George Washington	L	2-12
	*George Washington	L	1-3
	*William & Mary	L	0-2
	*William & Mary	L	6-7
	*William & Mary	L	1-4
	*William & Mary	W	3-1
	*The Citadel	L	2-3 (11)
A19	*at East Carolina	L	0-7
	Virginia	L	1-5
	Virginia Tech	L	0-2
	*Furman	L	1-4
	Virginia Tech	L	0-3
	*George Washington	L	1-2
	*George Washington	W	4-3

*-Denotes Southern Conference Game

1971

5-24, 1-15 SoCon

Coach: Tom Sawyer

M20	St. Francis (N.Y.)	W	7-5
M21	Long Island	L	1-7
M21	Long Island	L	5-7
M25	at Washington & Lee	W	10-2
M29	*at Furman	L	1-2
M29	*at Furman	L	2-4
M30	*at Davidson	L	0-1
M30	*at Davidson	L	0-3
A1	Virginia Tech	L	2-13
A4	*East Carolina	L	2-8
A4	*East Carolina	L	1-8
A8	Southern Connecticut State	L	0-3
A10	*William & Mary	L	1-6
A10	*William & Mary	W	1-0
A12	*The Citadel	L	2-6
A12	*The Citadel	L	0-2

A15	at Western Carolina	L	3-4 (10)
A17	at Appalachian State	W	3-0
A17	at Appalachian State	L	2-3
A18	George Washington	L	4-16
A20	*Richmond	L	0-6
A20	*Richmond	L	5-7
A24	*at William & Mary	L	1-2
A24	*at William & Mary	L	3-9
A26	at Virginia	L	2-9
A29	*at Richmond	L	0-6
A29	*at Richmond	L	3-9
A30	Old Dominion	L	3-9
A30	Old Dominion	W	3-1

*-Denotes Southern Conference Game

1972

6-19, 3-13 SoCon

Coach: Phil Tucker

M25	at James Madison	W	2-1
M28	Bethany	W	2-0
A3	at Virginia Tech	L	0-4
A5	Southern Connecticut State	L	6-15
A9	*Davidson	W	3-0
A10	*at William & Mary	L	1-12
A10	*at William & Mary	L	4-5
A15	*Furman	L	1-5
A16	*Furman	L	1-3
A17	*William & Mary	W	2-1
A17	*William & Mary	L	2-3
A19	*at The Citadel	L	2-3
A19	*at The Citadel	W	3-2
A21	*at East Carolina	L	0-14
A21	*at East Carolina	L	0-5
A23	*East Carolina	L	2-3
A25	Virginia	L	4-9
A26	Appalachian State	L	0-7
A26	Appalachian State	W	3-2
A29	*at Richmond	L	4-7
A29	*at Richmond	L	3-4
M2	*Richmond	L	5-13
M2	*Richmond	L	3-7
M7	Virginia Tech	L	0-2
M7	Washington & Lee	L	1-2

*-Denotes Southern Conference Game

1973

3-14, 0-11 SoCon

Coach: Phil Tucker

M24	James Madison	L	0-3
M24	James Madison	W	9-4
	*at Furman	L	0-3
	*at Furman	L	0-7
A7	*at The Citadel	L	1-7
	*Appalachian State	L	0-3
A16	*at Richmond	L	6-7
A19	at Virginia Commonwealth	W	11-2
A21	*Richmond	L	2-14
A23	*at Appalachian State	L	0-5
A30	*William & Mary	L	0-3
A30	*William & Mary	L	0-6
	*East Carolina	L	4-5
	*East Carolina	L	7-11
	Virginia Tech	L	2-7
	Virginia	L	1-11
	Washington & Lee	W	8-3

*-Denotes Southern Conference Game

1974

6-14, 5-9 SoCon

Coach: Donny White

M23	*at Davidson	W	3-2
M23	*at Davidson	L	1-9
M26	at James Madison	L	0-5
M26	at James Madison	L	3-5
M30	*at The Citadel	L	1-2
M30	*at The Citadel	L	2-6
A1	*at Appalachian State	L	0-3
A1	*at Appalachian State	L	7-19
A2	at Virginia Tech	L	
A4	*at Richmond	L	0-2
A8	*at Richmond	L	4-5
A9	*William & Mary	W	5-4
A11	Virginia	L	4-6 (12)
A15	*Furman	W	3-2

A15	*Furman	W	3-2
A16	Washington & Lee	W	6-3
A18	*William & Mary	W	4-3
A26	Virginia Tech	L	1-8
A27	*East Carolina	L	1-7
A27	*East Carolina	L	2-8

*-Denotes Southern Conference Game

1975

2-18, 1-13 SoCon

Home: 1-9 Away: 1-9 Neutral: 0-0

Coach: Jerry Roane

M25	Oneonta State	L	1-10
M26	Washington & Lee	W	6-4
M27	at Virginia Tech	L	5-10
M29	*at East Carolina	L	0-3
M29	*at East Carolina	L	3-13
M31	*Appalachian State	L	1-4
A3	*at Richmond	L	2-5
A6	Virginia Tech	L	2-12
A7	at Virginia	L	1-11
A9	*at Furman	L	2-9
A9	*at Furman	L	7-10
A14	*at Appalachian State	L	4-7
A16	*at William & Mary	W	5-4
A16	*at William & Mary	L	2-8
A21	*The Citadel	L	1-5
A21	*The Citadel	L	5-6
A24	*Richmond	L	2-7
A26	*Davidson	L	4-5
A26	*Davidson	L	0-7
A30	James Madison	L	1-4

*-Denotes Southern Conference Game

1976

6-23, 2-12 SoCon

Coach: Jerry Roane

M13	Connecticut	L	0-2
M13	Connecticut	L	1-6
M21	Massachusetts-Dartmouth	L	2-8
M21	Massachusetts-Dartmouth	L	2-7
M21	Massachusetts-Dartmouth	W	3-2
M24	Oneonta State	W	3-2
M25	Washington & Lee	W	11-0
M27	*Davidson	W	5-3
M27	*Davidson	L	4-5
M29	*William & Mary	L	3-4
A1	James Madison	W	9-7
A1	James Madison	L	0-15
A3	Virginia Tech	L	12-19
A5	*Furman	L	0-4
A5	*Furman	L	3-4
A7	*Richmond	L	4-17
A8	Virginia	L	6-8
A10	*The Citadel	W	6-3
A10	*The Citadel	L	4-9
A14	*at Appalachian State	L	1-13
A17	Old Dominion	L	2-4
A19	*Appalachian State	L	2-9
A20	Washington & Lee	L	7-12
A21	*at Richmond	L	3-9
A24	*East Carolina	L	1-11
A24	*East Carolina	L	0-11
A25	Virginia Tech	L	4-17
A27	*William & Mary	L	2-11
A30	Liberty	L	6-15

*-Denotes Southern Conference Game

1977

5-19, 2-12 SoCon

Home: 4-7 Away: 1-12 Neutral: 0-0

Coach: Vern Beitzel

M24	at Virginia Tech	L	7-12
M26	*at East Carolina	L	0-8
M26	*at East Carolina	L	0-3
M27	*at William & Mary	L	0-3
M27	*at William & Mary	L	2-14
M31	at Virginia	L	1-16
A2	*Appalachian State	L	3-11
A2	*Appalachian State	W	12-10
A9	Liberty	W	8-7
A9	Liberty	W	12-1
A12	Virginia Tech	L	4-8
A15	at Richmond	L	5-6

A15	at Richmond	L	1-2
A16	*Davidson	L	1-12
A16	*Davidson	L	10-11 (13)
A18	Old Dominion	W	7-6
A21	James Madison	L	3-22
A23	*at Furman	L	1-9
A23	*at Furman	W	4-2
A25	*Western Carolina	L	12-20
A25	*Western Carolina	L	9-18
A28	at Lynchburg	L	3-5
A30	*at Marshall	L	1-2
A30	*at Marshall	L	7-8 (9)

!-Game Played at Covington, Va.

*-Denotes Southern Conference Game

1978

2-27, 0-14 SoCon

Home: 1-11 Away: 1-16 Neutral: 0-0

Coach: Vern Beitzel

M18	*at Davidson	L	3-6
M18	*at Davidson	L	4-12
M20	*at The Citadel	L	0-1
M20	*at The Citadel	L	1-12
M22	at North Carolina Wesleyan	W	17-13
M24	at Old Dominion	L	0-7
M24	at Old Dominion	L	2-10
M31	Virginia	L	1-6
A1	*Furman	L	3-13
A1	*Furman	L	0-6
A4	James Madison	L	0-23
A8	*at Appalachian State	L	5-9
A8	*at Appalachian State	L	0-16
A10	*at Western Carolina	L	0-9
A10	*at Western Carolina	L	4-13
A12	Richmond	L	0-8
A14	Old Dominion	L	9-13
A15	*Tennessee-Chattanooga	L	6-7
A15	*Tennessee-Chattanooga	L	2-4
A18	at Richmond	L	5-13
A22	*Marshall	L	2-17
A22	*Marshall	L	5-9
	at James Madison	L	0-23
A30	Washington & Lee	L	2-3
A30	Washington & Lee	W	3-2
M1	at Liberty	L	1-5
M1	at Liberty	L	5-10
M5	at Virginia Tech	L	0-4
M5	at Virginia Tech	L	1-12

*-Denotes Southern Conference Game

1979

6-25, 0-15 SoCon

Home: 5-12 Away: 1-13 Neutral: 0-0

Coach: Vern Beitzel

M17	*at Tennessee-Chattanooga	L	0-4
M17	*at Tennessee-Chattanooga	L	5-9
M19	*at Furman	L	0-18
M19	*at Furman	L	3-9
M21	William & Mary	W	6-4
M24	*Appalachian State	L	1-7
M24	*Appalachian State	L	1-5
M29	*The Citadel	L	0-10
M29	*The Citadel	L	2-3
A2	James Madison	L	3-11
A6	at Richmond	L	3-5
A6	at Richmond	L	1-2
A7	Virginia Tech	L	0-9
A10	Old Dominion	W	5-4
A10	Old Dominion	L	1-10
A13	*at East Tenn. State	L	1-11
A13	*at East Tenn. State	L	2-9
A15	*at Marshall	L	5-6
A15	*at Marshall	L	1-8
A18	at Virginia Commonwealth	L	2-5
A18	at Virginia Commonwealth	L	3-4
A22	Longwood	W	6-1
A22	Longwood	L	4-7
A23	*Western Carolina	L	3-7
A25	at James Madison	L	3-14
A28	*Davidson	L	2-3
A28	*Davidson	L	1-2
	at Virginia	W	2-1 (10)
M1	Liberty	L	0-9
M2	Washington & Lee	W	3-2

All-Time Results

M2 Washington & Lee W 6-3
 *-Denotes Southern Conference Game

1980

4-22, 0-12 SoCon

Home: 0-10 Away: 4-12 Neutral: 0-0

Coach: Vern Beitzel

M16	Richmond	L	10-13
M17	Massachusetts	L	1-15
M19	at James Madison	L	0-6
M20	Davis & Elkins	L	0-17
M31	*at Davidson	L	3-6
M31	*at Davidson	L	1-6
A2	*at The Citadel	L	0-11
A2	*at The Citadel	L	1-3
A10	Virginia	L	0-7
A10	Virginia	L	2-5
A12	*East Tenn. State	L	4-10
A12	*East Tenn. State	L	0-4
A16	at Old Dominion	L	3-15
A17	at William & Mary	W	7-5
A21	*at Appalachian State	L	5-12
A21	*at Appalachian State	L	3-6
A23	*at Western Carolina	L	3-4
A23	*at Western Carolina	L	7-13
A25	James Madison	L	4-21
A26	at Virginia Tech	L	2-8
A28	*Marshall	L	0-9
A28	*Marshall	L	1-7
A30	at Longwood	W	9-7
A30	at Longwood	L	4-10
M3	at Washington & Lee	W	12-5
M3	at Washington & Lee	W	2-0

*-Denotes Southern Conference Game

1981

3-37, 0-16 SoCon

Home: 3-22 Away: 0-15 Neutral: 0-0

Coach: Jim Rowsey

M16	Davis & Elkins	L	1-21
M16	Davis & Elkins	L	2-8
M17	at James Madison	L	2-30
M20	California (Pa.)	W	12-7
M21	*Davidson	L	2-11
M21	*Davidson	L	2-13
M25	Richmond	L	4-7
M25	Richmond	L	0-14
M26	Lock Haven	L	6-20
M28	*at Tennessee-Chattanooga	L	1-12
M28	*at Tennessee-Chattanooga	L	1-22
M31	*at Furman	L	1-4
M31	*at Furman	L	2-5
A4	*The Citadel	L	1-7
A4	*The Citadel	L	3-17
A6	*Appalachian State	L	0-20
A6	*Appalachian State	L	3-10
A8	Virginia Tech	L	0-14
A9	Longwood	L	4-15
A13	*Western Carolina	L	3-6
A13	*Western Carolina	L	3-15
A15	at North Carolina Wesleyan	L	1-16
A16	at East Carolina	L	3-14
A16	at East Carolina	L	3-6
A21	*at East Tenn. State	L	1-12
A21	*at East Tenn. State	L	5-14
A22	at Virginia Tech	L	1-13
A24	James Madison	L	2-10
A25	William & Mary	L	4-5
A25	William & Mary	L	1-6
A28	Virginia Commonwealth	L	3-17
A28	Virginia Commonwealth	L	10-14
A29	*at Marshall	L	2-17
A29	*at Marshall	L	2-17
M1	Old Dominion	L	4-27
M1	Old Dominion	L	0-18
M2	Washington & Lee	W	8-7 (9)
M2	Washington & Lee	W	11-10
M4	at Virginia	L	3-13
M4	at Virginia	L	2-8

*-Denotes Southern Conference Game

1982

11-29, 6-10 SoCon

Home: 7-14 Away: 4-15 Neutral: 0-0

Coach: Donny White

M9	*at Davidson	W	7-6
M9	*at Davidson	L	5-7
M10	at Jacksonville	L	9-2
M11	at Rollins	L	0-8
M11	at Rollins	L	6-9
M13	at Flagler	L	3-6
M13	at Flagler	L	1-2
M18	at Washington & Lee	L	5-7
M19	at James Madison	L	1-7
M23	*Marshall	L	1-5
M23	*Marshall	W	14-3
M25	Lock Haven	W	12-8
M26	Duke	L	0-10
M29	*at The Citadel	L	2-11
M29	*at The Citadel	L	0-8
M31	at Virginia Commonwealth	L	8-9 (8)
M31	at Virginia Commonwealth	L	3-9
A4	*Tennessee-Chattanooga	L	2-4 (10)
A4	*Tennessee-Chattanooga	L	4-5
A5	James Madison	L	7-12
A7	Virginia Tech	L	6-11
A7	Virginia Tech	L	4-12
A10	Old Dominion	L	5-6
A10	Old Dominion	L	5-13
A12	*East Tenn. State	L	2-12
A12	*East Tenn. State	L	4-7
A14	Lynchburg	W	7-6
A18	*at Western Carolina	L	4-18
A18	*at Western Carolina	L	2-7
A19	*at Appalachian State	W	5-0
A19	*at Appalachian State	W	3-1
A21	at Lynchburg	L	4-5 (12)
A24	*Furman	W	15-10
A24	*Furman	W	10-5
A28	at Bridgewater	W	12-7
A29	Virginia	W	8-1
A29	Virginia	L	1-4
M1	George Mason	L	6-14
M1	George Mason	L	11-14 (10)
M3	Washington & Lee	W	10-6

!-Game Played at Parker Field, Richmond, Va.

*-Denotes Southern Conference Game

1983

11-25, 5-9 SoCon

Home: 6-10 Away: 5-12 Neutral: 0-3

Coach: Donny White

M8	\$at Rollins	L	4-6
M9	\$at Rollins	L	2-7
M10	\$vs. Vanderbilt	L	4-6
M11	\$at Rollins	L	1-7
M12	!vs. Yale	L	5-8
M12	!vs. Yale	L	9-10
M17	Washington & Lee	W	16-0
M23	Virginia Commonwealth	L	3-7
M24	at Virginia	L	3-11
M28	*at Furman	W	13-8
M28	*at Furman	L	0-3
M29	Lock Haven	W	4-3
M30	Mercyhurst	W	11-5
A3	*at East Tenn. State	L	2-17
A3	*at East Tenn. State	L	4-11
A4	*at Marshall	W	1-0
A4	*at Marshall	W	6-3
A6	James Madison	L	4-6
A12	William & Mary	W	10-3
A12	William & Mary	L	4-8
A17	*Davidson	L	4-7
A17	*Davidson	W	4-0
A18	*Western Carolina	L	1-4
A18	*Western Carolina	W	4-3 (8)
A20	Lynchburg	L	10-13 (10)
A21	at James Madison	L	2-12
A25	*The Citadel	L	0-5
A25	*The Citadel	L	4-6
A26	*Appalachian State	L	2-3
A26	*Appalachian State	L	2-6
A27	at Lynchburg	L	11-18
A30	at George Mason	W	5-4
A30	at George Mason	L	5-8
M2	at Virginia Tech	L	9-10
M2	at Virginia Tech	L	4-5
M3	at Washington & Lee	W	7-4

\$-Game Played at Winter Park, Fla.-Rollins College

Tournament

!-Game Played at Ormond Beach, Fla.

*-Denotes Southern Conference Game

1984

16-18, 6-7 SoCon

Home: 8-6 Away: 8-9 Neutral: 0-3

Coach: Donny White

M8	at Washington & Lee	W	8-4 (6)
M10	California (Pa.)	W	8-0
M12	at Georgia Southern	W	7-6
M14	at Armstrong Atlantic	W	2-0
M14	at Armstrong Atlantic	L	11-3
M15	!vs. Lehigh	L	5-13
M17	*at East Tenn. State	L	1-3
M17	*at East Tenn. State	W	6-4
M23	at James Madison	L	2-12
M24	*Marshall	L	2-3
M24	*Marshall	L	6-12
M27	Bluefield	W	6-3
M27	Bluefield	W	14-0
M31	*at Marshall	W	3-2
M31	*at Marshall	W	12-6
A1	*at Marshall	L	3-14
A3	Virginia	L	4-11
A6	James Madison	W	4-1
A7	*East Tenn. State	W	5-2
A9	*East Tenn. State	W	9-4
A10	*East Tenn. State	W	7-6
A12	at Richmond	W	8-1
A14	at Lynchburg	W	11-3
A16	*Appalachian State	L	1-10
A18	at Old Dominion	L	2-13
A19	at William & Mary	L	3-7
A19	at William & Mary	L	1-2
A21	*at Appalachian State	L	1-11
A21	*at Appalachian State	L	7-15
A25	Lynchburg	W	9-1
A28	%vs. Western Carolina	L	5-10
A28	%vs. The Citadel	L	7-12
M1	Virginia Tech	L	4-6
M1	Virginia Tech	L	4-13

!-Game Played at Statesboro, Ga.

*-Denotes Southern Conference Game

%-Denotes Southern Conference Tournament

Game-Cullowhee, N.C.

1985

16-24, 8-10 SoCon

Home: 10-10 Away: 5-9 Neutral: 1-5

Coach: Donny White

M1	*at East Tenn. State	W	12-5
M2	*at East Tenn. State	L	2-3
M2	*at East Tenn. State	W	8-2
M6	Virginia	L	1-5
M11	\$vs. Tulane	L	6-7
M12	\$vs. Central Michigan	L	3-6
M13	\$vs. Rollins	W	8-7
M14	\$vs. Tulane	L	3-9
M15	\$vs. Central Michigan	L	10-15
M16	\$vs. Rollins	L	7-15
M20	at James Madison	L	4-9
M23	*at Marshall	L	5-10
M23	*at Marshall	W	9-4
M24	*at Marshall	W	5-4
M26	Virginia Commonwealth	W	6-4
M28	at Washington & Lee	W	10-1
M30	*Marshall	L	1-4
M30	*Marshall	W	10-7
M31	*Marshall	L	5-12
A3	James Madison	L	5-6
A4	Shenandoah	W	21-9
A5	*East Tenn. State	L	10-14
A5	*East Tenn. State	W	9-1
A6	*East Tenn. State	W	12-5
A9	William & Mary	W	15-6
A9	William & Mary	L	5-8 (10)
A10	Lynchburg	W	10-4
A13	*at Appalachian State	L	6-8
A13	*at Appalachian State	L	3-13
A14	*at Appalachian State	L	3-26
A17	at Virginia Tech	L	3-13
A19	*Appalachian State	L	5-18
A20	*Appalachian State	W	8-3

A20	*Appalachian State	L	6-18
A24	at Lynchburg	L	2-5
A30	at Virginia	L	5-8
M3	Virginia Tech	L	3-16
M5	Richmond	L	3-11
M5	Richmond	W	7-0
M6	Washington & Lee	W	10-9

!-Game Played at Winter Park, Fla.-Rollins College

Tournament

***-Denotes Southern Conference Game**

1986

15-25, 7-11 SoCon

Home: 10-7 Away: 4-17 Neutral: 1-1

Coach: Donny White

M3	at Richmond	L	0-3
M4	at Virginia Commonwealth	L	6-7
M7	*East Tenn. State	W	8-5
M7	*East Tenn. State	L	2-5
M8	*East Tenn. State	L	7-10
M9	at Florida Tech	L	1-11
M10	at Florida Tech	L	0-6
M11	at Florida Tech	L	4-5 (10)
M12	!vs. Sacred Heart	W	9-2
M18	Ferrum	W	8-5
M19	James Madison	L	6-13
M22	*Marshall	W	9-3
M22	*Marshall	W	5-1
M23	*Marshall	W	18-15
M25	Lock Haven	W	10-4
M25	Lock Haven	W	6-4
M26	at James Madison	L	6-7
M28	*at Marshall	W	6-3
M28	*at Marshall	L	12-13
M29	*at Marshall	L	8-9
M31	Washington & Lee	W	10-9
A3	Oneonta State	W	13-3
A5	*at East Tenn. State	W	8-7
A5	*at East Tenn. State	L	3-5
A6	*at East Tenn. State	L	10-11 (10)
A9	Virginia	L	9-12
A10	at Lynchburg	L	1-4
A11	*Appalachian State	L	2-14
A11	*Appalachian State	L	4-12
A12	*Appalachian State	W	8-1
A15	William & Mary	W	2-1 (10)
A15	William & Mary	L	10-13
A19	*at Appalachian State	L	3-12
A19	*at Appalachian State	L	7-8
A20	*at Appalachian State	L	5-6 (11)
A22	\$vs. Virginia	L	0-17
A29	at Washington & Lee	W	28-17
A30	at Virginia Tech	L	4-27
M2	at Old Dominion	L	7-15
M4	Virginia Tech	L	6-9

!-Game Played at Melbourne, Fla.

!-Game Played at Madison, Va.

***-Denotes Southern Conference Game**

1987

16-16-1, 8-4 SoCon-SoCon Tournament Finalists

Home: 5-4 Away: 9-10-1 Neutral: 2-2

Coach: Donny White

M5	at Duke	L	2-8
M6	*at East Tenn. State	W	12-8
M6	*at East Tenn. State	W	21-4
M7	*at East Tenn. State	W	15-5
M10	at Florida Tech	T	10-10
M11	at Florida Tech	L	1-7
M12	at Florida Tech	L	1-14
M13	at Florida Tech	L	6-7
M18	at James Madison	L	2-5
M21	*at Marshall	W	6-5
M21	*at Marshall	W	7-6
M22	*at Marshall	W	17-9
M24	at Virginia	L	0-8
M28	*at Appalachian State	L	1-6
M28	*at Appalachian State	W	6-1
M29	*at Appalachian State	L	4-6
A2	!Radford	W	8-1
A2	!Radford	W	10-3
A7	at William & Mary	L	2-3
A7	at William & Mary	W	6-4
A8	!Longwood	L	7-8

A11	*\$Marshall	W	4-3
A11	*\$Marshall	L	2-5
A12	*\$Marshall	L	4-8
A14	at Ferrum	L	3-5
A20	\$Lynchburg	W	25-9
A22	&James Madison	L	4-11
A24	%vs. Western Carolina	L	4-16
A25	%vs. Davidson	W	15-7
A25	%vs. Appalachian State	W	10-9
A26	%vs. Western Carolina	L	4-9
A30	at Virginia Tech	W	13-12
M1	!Washington & Lee	W	12-4

!-Game Played at Washington & Lee

!-Game Played in Salem, Va.

&-Game Played at James Madison University

***-Denotes Southern Conference Game**

%-Denotes Southern Conference Tournament Game-Asheville, N.C.

1988

20-20, 11-7 SoCon-North Division Champions

Home: 10-5 Away: 7-8 Neutral: 3-7

Coach: Paul Maini

F28	!Mary Washington	W	9-2
M3	at Duke	L	5-7
M7	\$vs. Maine	L	9-11 (10)
M8	\$vs. Wake Forest	L	0-10
M9	\$vs. Rollins	W	5-4
M10	\$vs. Maine	L	1-6
M10	\$vs. Villanova	W	16-4
M11	\$vs. Wake Forest	L	5-6 (10)
M12	\$vs. Rollins	W	5-1
M16	at James Madison	L	3-23
M19	*Marshall	W	25-6
M19	*Marshall	L	7-15
M20	*Marshall	L	7-21
M22	at James Madison	L	0-18
M23	at Radford	W	11-4
M26	*Appalachian State	L	1-7 (5)
M27	*Appalachian State	W	8-4
M28	!*Appalachian State	W	6-4
M29	West Chester	L	3-4
M30	Bucknell	W	6-4
A2	*at East Tenn. State	L	3-7
A2	*at East Tenn. State	W	1-0
A3	*at East Tenn. State	W	5-3
A5	Virginia	L	5-11
A6	Richmond	W	7-6
A9	*at Marshall	L	8-9 (10)
A10	*at Marshall	W	8-2
A10	*at Marshall	W	9-7
A14	Longwood	W	11-8
A16	*at Appalachian State	W	12-5
A16	*at Appalachian State	L	8-9
A17	*at Appalachian State	L	7-8
A20	at Lynchburg	L	3-11
A21	at Richmond	L	3-8
A23	*East Tenn. State	W	7-2

A23	*East Tenn. State	W	7-1
A24	*East Tenn. State	W	20-3
A26	at Virginia	W	5-3
A29	%vs. The Citadel	L	8-9
A30	%vs. Appalachian State	L	4-11

!-Game Played at Washington & Lee

!-Game Played at Winter Park, Fla.-Rollins College

Tournament

***-Denotes Southern Conference Game**

%-Denotes Southern Conference Tournament Game-Asheville, N.C.

1989

16-23, 8-7 SoCon

Home: 10-6 Away: 6-15 Neutral: 0-2

Coach: Paul Maini

M2	at Duke	L	4-5
M4	at Virginia Commonwealth	L	3-4 (10)
M9	at Bridgewater	L	6-7
M10	at Liberty	W	5-3
M11	*at East Tenn. State	W	10-3
M11	*at East Tenn. State	W	13-1
M12	*at East Tenn. State	L	1-5
M14	at Old Dominion	L	4-9
M16	at Richmond	W	5-3
M19	Utica	W	7-6
M22	Oneonta State	W	8-6
M22	Richmond	L	6-10
M25	*Marshall	L	5-11
M25	*Marshall	W	8-3
M27	Bucknell	W	3-2
M28	at Virginia	L	13-14 (10)
M29	Clarkson	W	9-3
M30	at James Madison	L	6-10
A1	*at Western Carolina	W	10-3
A1	*at Western Carolina	L	4-7
A2	*at Western Carolina	L	2-3
A3	at Radford	L	4-26
A6	James Madison	W	8-7
A9	*Appalachian State	L	3-8
A9	*Appalachian State	L	7-10
A10	at Liberty	L	5-6
A11	at Virginia Tech	L	8-20
A12	Radford	L	7-14
A14	at Wake Forest	L	5-6
A16	*at Furman	W	8-5
A16	*at Furman	L	6-7
A17	Virginia	L	8-14
A19	Shenandoah	W	9-4
A20	at Ferrum	L	0-9(Forf.)
A22	*The Citadel	W	13-2
A22	*The Citadel	W	6-4
A23	*The Citadel	W	5-4
A27	%The Citadel	L	11-17
A28	%Furman	L	5-7

***-Denotes Southern Conference Game**

%-Denotes Southern Conference Tournament Game-Asheville, N.C.



The 1988 Keydet club finished with a 20-20 record, including an 11-7 mark in the Southern Conference on their way to the North Division title. Here they are posed with Hall of Famer Joe Dimaggio.

All-Time Results

1990

12-26, 6-8 SoCon

Home: 7-8 Away: 5-16 Neutral: 0-2

Coach: Paul Maini

F17	at Mary Washington	W	3-1
F23	at Florida State	L	1-17
F24	at Florida State	L	2-3
F25	at Florida State	L	0-8
M3	George Mason	W	9-3
M3	George Mason	W	10-2
M6	at Virginia	W	5-4
M7	at Virginia Tech	L	2-9
M9	Holy Cross	L	11-25 (8)
M11	at Columbus State	L	4-6
M12	at Columbus State	L	2-10
M13	at Columbus State	L	4-9
M14	at West Georgia	L	2-13
M15	at Auburn	L	1-11
M17	*at Marshall	L	10-16
M18	*at Marshall	W	7-0
M18	*at Marshall	L	5-6
M21	at James Madison	L	1-10
M22	Bridgewater	L	8-9
M25	*Western Carolina	L	5-8
M25	*Western Carolina	L	0-4
M26	Bucknell	W	8-7
M31	*at Appalachian State	L	9-14
A1	*at Appalachian State	W	6-2
A1	*at Appalachian State	W	8-2
A4	at Richmond	L	2-5
A5	Oneonta State	W	7-5
A8	*Furman	W	4-3
A8	*Furman	L	3-13 (8)
A11	James Madison	L	1-10
A13	*at The Citadel	L	3-8
A17	at Liberty	L	8-12
A19	Richmond	L	0-5
A21	*East Tenn. State	W	9-2
A21	*East Tenn. State	L	1-10
A22	*East Tenn. State	W	6-5
A26	%Appalachian State	L	2-9
A27	%Furman	L	9-10 (10)

*-Denotes Southern Conference Game

%-Denotes Southern Conference Tournament Game-Charleston, S.C.

1991

2-35-1, 1-15 SoCon

Home: 1-14-1 Away: 1-19 Neutral: 0-2

Coach: Paul Maini

F27	at William & Mary	L	0-4
M1	Bucknell	L	8-12 (8)
M2	Virginia Commonwealth	L	3-11
M6	Radford	T	11-11 (8)
M7	at Virginia	L	5-16
M9	*Marshall	L	1-11
M9	*Marshall	L	2-10
M10	*Marshall	L	0-16
M16	*at Western Carolina	L	2-14
M16	*at Western Carolina	L	1-20
M17	*at Western Carolina	L	2-21
M19	at James Madison	L	0-22
M20	at Richmond	L	8-17
M21	at Bridgewater	L	3-11
M24	*Appalachian State	L	2-17
M24	*Appalachian State	L	6-7
M25	West Chester	W	12-4
M27	at George Mason	L	4-9
M30	*at Furman	L	3-5
M30	*at Furman	L	6-8
A4	at Liberty	L	2-8
A6	*The Citadel	L	1-5
A6	*The Citadel	L	0-9
A7	*The Citadel	L	3-8
A9	James Madison	L	2-19
A10	at Radford	L	8-9
A11	Liberty	L	4-14
A13	*at East Tenn. State	L	3-4
A13	*at East Tenn. State	L	4-10
A14	*at East Tenn. State	W	4-3
A16	Virginia Tech	L	3-12
A17	Richmond	L	4-8
A20	at Wake Forest	L	3-10
A20	at Wake Forest	L	4-8

A21	at Wake Forest	L	2-12
A23	at Virginia Tech	L	1-16
A25	%vs. Western Carolina	L	2-18
A26	%vs. Furman	L	3-8

*-Denotes Southern Conference Game

%-Denotes Southern Conference Tournament Game-Charleston, S.C.

1992

11-39, 4-15 SoCon

Home: 6-15 Away: 4-22 Neutral: 1-2

Coach: Chris Finwood

F14	at Florida State	L	4-10
F15	at Florida State	L	0-20
F16	at Florida State	L	4-5 (10)
F21	Shenandoah	W	7-2
F22	Virginia	L	5-14
F28	Bucknell	L	4-15
F29	at Mary Washington	W	11-6
M1	at George Mason	L	3-6
M2	at Virginia Tech	L	5-16
M5	Holy Cross	W	21-0
M7	*Western Carolina	L	4-7 (7)
M8	*Western Carolina	L	3-8
M8	*Western Carolina	W	6-5
M10	at Old Dominion	L	3-12 (9)
M10	at Old Dominion	L	0-15
M11	at Virginia Wesleyan	W	13-4 (8)
M12	C.V. Post	L	4-12
M14	*at Appalachian State	L	0-2
M14	*at Appalachian State	L	5-6
M15	*at Appalachian State	W	12-8
M17	James Madison	L	5-8
M19	Bridgewater	L	1-10
M21	*Furman	L	3-17
M21	*Furman	L	3-11
M22	*Furman	L	4-7
M24	at Liberty	L	11-12 (10)
M25	Richmond	L	2-16
M26	at Radford	L	2-5
M28	*at The Citadel	L	1-4
M28	*at The Citadel	L	3-5
M29	*at The Citadel	L	0-9
M31	Liberty	W	7-6 (10)
A1	Radford	W	7-6
A2	Virginia Commonwealth	L	2-9
A5	*at East Tenn. State	W	10-8
A5	*at East Tenn. State	L	2-5
A7	at Virginia Commonwealth	L	2-9
A9	at James Madison	L	6-10
A11	*Georgia Southern	W	5-3
A11	*Georgia Southern	L	3-4
A12	*Georgia Southern	L	2-11
A13	at Virginia	L	1-12
A15	at Richmond	L	1-14
A18	*at Marshall	L	1-5
A18	*at Marshall	L	4-6
A23	%vs. Western Carolina	L	2-3
A24	%vs. Furman	W	5-3
A25	%vs. East Tenn. State	L	3-20
A29	George Mason	L	1-8
M2	at UNC Greensboro	L	5-6

!-Game Played in Lenoir, N.C.

*-Denotes Southern Conference Game

%-Denotes Southern Conference Tournament Game-Charleston, S.C.

1993

20-29, 5-15 SoCon

Home: 15-13 Away: 2-13 Neutral: 3-3

Coach: Chris Finwood

F14	at North Carolina A&T	W	8-4
F20	at Duke	W	8-3
F23	at Virginia	L	3-6
F24	Shenandoah	W	11-1
F28	*at Davidson	L	3-8
F28	*at Davidson	L	0-4
M2	at Washington & Lee	W	4-2
M5	Bucknell	W	5-4
M6	*East Tenn. State	L	5-6 (9)
M6	*East Tenn. State	L	2-6
M7	*East Tenn. State	W	6-4
M9	Juniata	W	9-1
M11	at Bridgewater	L	3-5

M15	at N.C. State	L	1-11
M16	&vs. UNC Greensboro	L	4-6
M21	*Georgia Southern	L	6-8
M21	*Georgia Southern	W	8-6
M22	*Georgia Southern	L	6-10
M24	at Richmond	L	2-8
M25	Howard	W	11-2
M27	*!at Marshall	L	0-7
M28	*!at Marshall	L	2-3
M28	*!at Marshall	L	5-12
M31	Mary Washington	L	1-5 (7)
A1	at James Madison	L	2-4 (7)
A3	UNC Greensboro	W	12-5
A4	UNC Greensboro	W	4-3
A4	UNC Greensboro	W	6-3
A7	Old Dominion	L	3-6
A10	*Western Carolina	W	4-3
A10	*Western Carolina	W	7-1
A11	*Western Carolina	L	1-13
A13	William & Mary	W	5-1
A13	William & Mary	L	5-6 (11)
A14	Richmond	L	2-5
A17	*Appalachian State	W	5-1
A17	*Appalachian State	L	1-2
A18	*Appalachian State	L	3-10
A19	Radford	W	8-4
A20	Virginia Commonwealth	L	11-14
A22	Virginia Tech	L	0-6
A24	*at The Citadel	L	2-3
A24	*at The Citadel	L	0-2
A25	*at The Citadel	L	2-3
A29	%vs. Georgia Southern	W	8-0
A30	%vs. Davidson	W	15-5
M1	%vs. Western Carolina	W	8-4
M2	%vs. Western Carolina	L	5-12
M2	%vs. Western Carolina	L	1-5

&-Game Played in Raleigh, N.C.

!-Game Played in Boyd Co., Ky.

*-Denotes Southern Conference Game

%-Denotes Southern Conference Tournament Game-Charleston, S.C.

\$-Denotes Southern Conference Tournament Championship Series

1994

21-29, 10-13 SoCon

Home: 15-6 Away: 4-20 Neutral: 2-3

Coach: Chris Finwood

F14	at Duke	W	2-1
F17	at UNC Greensboro	L	1-9
F20	Georgetown	W	10-9
F25	Virginia Commonwealth	L	7-9
F26	*Davidson	W	4-0
F26	*Davidson	L	6-9
F27	*Davidson	W	7-6
M5	*at East Tenn. State	W	8-1
M5	*at East Tenn. State	L	2-11
M6	*at East Tenn. State	L	5-14
M11	Davis & Elkins	W	4-0
M12	*Furman	W	8-5
M12	*Furman	W	6-2
M13	*Furman	W	6-4 (10)
M14	at Virginia Wesleyan	L	4-14
M15	at Old Dominion	L	5-17
M16	at William & Mary	L	3-4 (10)
M17	at Wake Forest	L	8-9
M19	*at Georgia Southern	L	0-4
M19	*at Georgia Southern	L	1-10
M20	*at Georgia Southern	L	0-4
M22	Radford	W	10-1
M23	at James Madison	L	2-17
M25	North Carolina A&T	W	14-4
M26	*Marshall	L	1-8
M26	*Marshall	W	7-1
M30	at Richmond	L	2-6
A4	Liberty	L	7-13
A7	at George Mason	L	4-6
A9	*at Western Carolina	L	3-9
A9	*at Western Carolina	L	1-5
A10	*at Western Carolina	W	3-1
A12	!vs. James Madison	L	7-13
A14	Virginia	W	12-3
A16	*at Appalachian State	L	2-13
A16	*at Appalachian State	L	1-8
A17	*at Appalachian State	W	11-6

A20	at Virginia Commonwealth	L	1-6
A21	at Liberty	L	2-9
A22	Howard	W	11-1
A22	Howard	W	16-4
A23	*The Citadel	L	7-8
A23	*The Citadel	W	8-6
A24	*The Citadel	L	2-6
A25	at Radford	L	4-12
A26	Washington & Lee	W	9-4
A28	%vs. Georgia Southern	W	6-4
A29	%vs. Marshall	W	6-4
A30	%vs. The Citadel	L	3-4
M1	%vs. Western Carolina	L	1-7

I-Game Played in Staunton, Va.

*-Denotes Southern Conference Game

%-Denotes Southern Conference Tournament Game-Charleston, S.C.

1995

19-28, 10-14 SoCon

Home: 10-12 Away: 8-10 Neutral: 1-5

Coach: Scott Gines

F10	#vs. South Carolina	L	2-6
F12	#vs. Tennessee	L	4-11
F21	at Virginia Commonwealth	L	6-7 (11)
F24	Bucknell	W	8-7
F25	*East Tenn. State	L	3-5 (15)
F26	*East Tenn. State	W	9-8
F26	*East Tenn. State	W	16-6
F28	at Virginia	L	1-5
M4	*at Furman	L	7-10 (11)
M5	*at Furman	L	6-7
M5	*at Furman	W	7-3
M7	William & Mary	L	2-4
M10	Juniata	W	15-1
M11	*Georgia Southern	L	6-8
M11	*Georgia Southern	L	4-6
M12	*Georgia Southern	L	3-11
M14	at Campbell	L	3-6
M16	at William & Mary	W	8-7
M18	*at Marshall	L	3-7
M18	*at Marshall	W	7-6
M19	*at Marshall	W	6-4
M21	James Madison	L	5-7
M24	West Chester	W	13-5
M25	West Chester	L	2-6
M25	West Chester	W	9-3
M28	at Liberty	W	8-6

A1	*Western Carolina	L	0-1
A1	*Western Carolina	W	2-1
A2	*Western Carolina	L	2-7
A4	Virginia Commonwealth	L	11-13
A5	at Richmond	L	4-7
A6	at James Madison	L	2-9
A8	*Appalachian State	W	12-7
A8	*Appalachian State	W	9-6
A9	*Appalachian State	L	9-11
A13	Virginia	W	6-4
A15	*at The Citadel	L	2-3
A15	*at The Citadel	L	4-7
A16	*at The Citadel	L	1-3
A18	Virginia Tech	L	1-5
A22	*at Davidson	L	10-12
A22	*at Davidson	W	4-1
A23	*at Davidson	W	2-1
A25	Washington & Lee	W	6-1
A27	%vs. Georgia Southern	L	3-4
A28	%vs. Appalachian State	W	13-4
A29	%vs. East Tenn. State	L	4-8

#-Denotes Game Played at Southern Challenge-Charleston, S.C.

*-Denotes Southern Conference Game

%-Denotes Southern Conference Tournament Game-Charleston, S.C.

1996

17-29, 7-16 SoCon

Home: 11-6 Away: 3-16 Neutral: 3-7

Coach: Scott Gines

F9	!vs. Old Dominion	L	7-13
F10	!vs. N.C. State	L	3-11
F11	!vs. UNC Greensboro	L	5-6
F17	at Auburn	L	0-14
F17	at Auburn	L	0-6

F18	at Auburn	L	3-14
F25	*Furman	L	3-6
F25	*Furman	L	1-7
F26	*Furman	L	0-2 (5)
M2	*at Georgia Southern	L	6-14
M2	*at Georgia Southern	L	6-16
M3	*at Georgia Southern	L	5-14
M7	Saint Rose	W	12-4
M9	at Elizabethtown	L	0-1
M13	*Marshall	W	5-3
M13	*Marshall	W	6-4
M14	*Marshall	W	9-8
M16	Youngstown State	L	3-10
M18	Youngstown State	L	7-12
M18	Youngstown State	W	7-6
M20	Hartford	W	6-2
M20	Hartford	W	3-2
M23	*at Western Carolina	L	6-8
M23	*at Western Carolina	L	1-3
M24	*at Western Carolina	L	5-13
M27	at William & Mary	L	9-10
M27	at William & Mary	W	2-1
M30	*at Appalachian State	L	11-12 (10)
M30	*at Appalachian State	L	4-6
M31	*at Appalachian State	L	1-7
A3	William & Mary	W	8-4
A3	William & Mary	W	8-3
A6	*The Citadel	L	4-14
A6	*The Citadel	L	1-5
A7	*The Citadel	W	13-5
A13	*Davidson	L	3-11
A14	*Davidson	W	8-4
A14	*Davidson	L	3-9
A17	Bluefield	W	6-5
A21	*at East Tenn. State	W	3-2
A21	*at East Tenn. State	W	5-1
A22	at Virginia	L	4-9
A25	%vs. Western Carolina	W	7-3
A27	%vs. East Tenn. State	W	4-2
A27	%vs. Georgia Southern	L	2-11
A28	%vs. The Citadel	L	5-8

!-Southern Challenge, Charleston, S.C.

*-Denotes Southern Conference Game

%-Denotes Southern Conference Tournament Game-Charleston, S.C.

1997

13-35, 6-13 SoCon

Home: 8-17 Away: 3-14 Neutral: 2-4

Coach: Scott Gines

F6	at Troy	W	3-2
F7	#vs. Air Force	L	2-3
F8	^vs. Troy	W	4-3
F9	^vs. Air Force	W	6-3
F9	^vs. Troy	L	3-9
F14	at Alabama-Birmingham	L	5-18
F15	at Samford	L	5-17
F16	at Alabama-Birmingham	L	3-16
F22	*Georgia Southern	L	6-21
F22	*Georgia Southern	L	1-5
F23	*Georgia Southern	L	11-15
F27	Liberty	W	9-4
M4	at South Carolina	L	6-16
M5	at South Carolina	L	4-18
M7	Akron	L	3-22
M9	Akron	L	5-8
M9	Akron	L	3-12
M11	Old Dominion	L	5-13
M12	Old Dominion	L	7-19
M15	*Western Carolina	W	17-9
M15	*Western Carolina	W	6-5
M16	*Western Carolina	L	6-13
M20	Hartford	L	9-16 (7)
M22	*Appalachian State	L	10-14
M22	*Appalachian State	W	3-1
M23	*Appalachian State	W	15-11
M25	Virginia	L	3-13
M27	LeMoyn	W	16-10
M29	*at The Citadel	W	11-10 (11)
M29	*at The Citadel	L	3-12
M30	*at The Citadel	L	10-19
A1	Wofford	L	5-6
A2	Wofford	W	9-7
A3	William & Mary	L	5-17
A5	*at Davidson	L	4-5

A5	*at Davidson	W	8-4
A8	at Auburn	L	2-14
A9	at Auburn	L	3-17
A13	*East Tenn. State	L	14-20
A13	*East Tenn. State	L	5-13
A15	at William & Mary	L	5-6
A16	Howard	W	15-5
A16	Howard	L	6-7
A19	*at Furman	L	4-6
A19	*at Furman	L	6-7
A20	*at Furman	L	5-9
A24	&vs. Western Carolina	L	3-4
A25	&vs. East Tennessee State	L	3-7

#-Game Played in Troy, Ala.

^-Game Played in Montgomery, Ala.

*-Denotes Southern Conference Game

&-Denotes Southern Conference Tournament Game-Charleston, S.C.

1998

14-35, 7-17 SoCon

Home: 9-15 Away: 5-20 Neutral: 0-0

Coach: Scott Gines

F14	at Troy	L	8-13
F14	at Troy	L	3-20
F15	at Troy	L	6-18
F21	Bucknell	L	4-15
F21	Bucknell	W	9-8
F22	Bucknell	L	2-3
F24	at Liberty	L	14-15
F25	at Virginia	L	7-13 (8)
F28	Mount St. Mary's	W	11-1 (6)
M1	at Duke	L	4-8
M1	at Duke	L	2-14 (5)
M3	at South Carolina	L	11-14
M4	at South Carolina	L	5-8
M7	Brown	W	10-5
M7	Brown	W	2-0
M7	Brown	L	2-3 (5)
M10	Marshall	W	17-10
M11	Marshall	L	4-6
M12	Marshall	L	2-7
M14	*at Wofford	L	2-16
M14	*at Wofford	W	10-4
M15	*at Wofford	L	4-5
M17	George Washington	W	9-3
M18	George Washington	L	4-8
M21	*at Georgia Southern	W	7-4
M21	*at Georgia Southern	L	6-7
M22	*at Georgia Southern	L	2-8
M24	Ohio	L	1-5
M25	William & Mary	L	6-14
M26	Maryland-Baltimore County	W	15-5
M28	*at Western Carolina	L	1-25
M28	*at Western Carolina	L	7-8
M29	*at Western Carolina	L	4-11
A1	*UNC Greensboro	L	9-15
A1	*UNC Greensboro	L	2-9
A2	*UNC Greensboro	L	6-20
A4	*at East Tenn. State	L	3-7
A5	*at East Tenn. State	L	3-12
A5	*at East Tenn. State	W	10-2
A7	at Auburn	L	7-19
A11	*Appalachian State	W	12-11 (10)
A11	*Appalachian State	W	4-3 (9)
A12	*Appalachian State	L	5-8
A15	*at Davidson	W	11-0
A15	*at Davidson	L	7-9
A16	*at Davidson	W	10-4
A25	*The Citadel	L	4-8
A25	*The Citadel	L	4-7
A25	*The Citadel	L	6-10

*- Denotes Southern Conference Game

1999

22-27, 13-16 SoCon

Home: 14-10 Away: 8-15 Neutral: 0-2

Coach: Scott Gines

F13	*at College of Charleston	L	2-15
F13	*at College of Charleston	L	4-11
F14	*at College of Charleston	W	9-8
F20	*at Davidson	W	11-5
F21	*at Davidson	W	5-2
F21	*at Davidson	W	10-5

All-Time Results

F27	*at Furman	L	2-14
F27	*at Furman	L	2-5
F28	*at Furman	W	7-6
M3	at Richmond	L	7-14 (6)
M5	Mount St. Mary's	W	24-9 (8)
M6	Mount St. Mary's	W	21-5
M7	Mount St. Mary's	W	13-5
M7	Mount St. Mary's	W	6-3
M13	*at The Citadel	L	2-16
M13	*at The Citadel	L	4-17
M14	*at The Citadel	L	4-8
M19	IUPUI	L	4-6
M20	East Tenn. State	W	7-6
M20	IUPUI	W	14-3
M27	*at Appalachian State	L	7-13
M27	*at Appalachian State	W	6-4
M28	*at Appalachian State	L	16-19
M30	Brown	W	12-11
M30	Brown	L	7-11
M31	Brown	L	8-9
A3	*Wofford	W	12-10
A3	*Wofford	W	5-4
A4	*Wofford	W	9-5
A7	Marshall	W	12-10
A7	Marshall	L	4-5
A10	*Georgia Southern	L	3-11
A10	*Georgia Southern	W	13-10
A13	at William & Mary	L	3-9
A17	*East Tenn. State	L	9-16
A17	*East Tenn. State	W	2-1
A17	*East Tenn. State	W	14-7
A20	William & Mary	L	5-12
A24	*Western Carolina	L	5-18
A24	*Western Carolina	L	4-10
A25	*Western Carolina	L	4-7
A30	*at UNC Greensboro	L	1-3
M1	*at UNC Greensboro	W	2-1
M1	*at UNC Greensboro	L	0-7
M11	at Bucknell	L	3-4
M12	at Bucknell	L	3-5
M12	at Bucknell	W	6-1
M19	%College of Charleston	L	4-15
M20	%Western Carolina	L	4-8

%-Denotes Southern Conference Tournament

Game-Charleston, S.C.

*- Denotes Southern Conference Game

2000

19-30, 11-19 SoCon

Home: 8-15 Away: 8-14 Neutral: 3-1

Coach: Scott Gines

F11	%Air Force	W	14-7
F12	%Air Force	L	2-7
F12	%Air Force	W	19-8
F13	%Air Force	W	10-9
F19	*at Davidson	L	6-7
F20	*at Davidson	L	5-6
F20	*at Davidson	L	3-11
F26	*at Western Carolina	W	8-3
F26	*at Western Carolina	L	7-11
F27	*at Western Carolina	W	7-6
M3	*at Georgia Southern	L	4-17
M4	*at Georgia Southern	L	7-8
M5	*at Georgia Southern	W	7-5
M6	at Liberty	L	2-9
M11	*at Wofford	L	3-9
M12	*at Wofford	L	13-16
M12	*at Wofford	W	6-5
M18	*Furman	L	18-25
M19	*Furman	W	10-7
M19	*Furman	L	7-8
M22	Howard	W	6-5
M22	Howard	W	9-8
M24	*UNC Greensboro	L	3-16
M25	*UNC Greensboro	L	10-21
M26	*UNC Greensboro	W	10-9
M28	Brown	L	7-16
M28	Brown	W	10-7
M29	Brown	L	6-8
M31	*The Citadel	L	5-13
A1	*The Citadel	W	14-12
A2	*The Citadel	L	1-18 (5)
A4	at Bucknell	L	3-11
A5	at Bucknell	W	8-4
A8	*at East Tenn. State	L	2-5

A9	*at East Tenn. State	W	5-4
A9	*at East Tenn. State	W	9-4
A11	William & Mary	L	12-14
A15	*Appalachian State	L	7-14
A15	*Appalachian State	L	3-8
A16	*Appalachian State	W	7-14
A22	*College of Charleston	L	3-13
A22	*College of Charleston	W	13-8
A23	*College of Charleston	L	5-7
A26	at Marshall	W	4-3
A26	at Marshall	L	12-13
A28	at William & Mary	L	3-5
A28	at William & Mary	L	2-9
A30	Richmond	L	7-17
M2	Liberty	L	7-15

%- Played in Tampa, Fla.

*-Denotes Southern Conference Game

2001

15-32, 8-19 SoCon

Home: 8-15 Away: 6-14 Neutral: 1-3

Coach: Tom Slater

F9	%Air Force	L	3-4
F10	%Air Force	L	7-15
F10	%Air Force	W	7-2
F11	%Air Force	L	1-6
F17	Bucknell	L	10-13
F	Bucknell	L	6-9
F18	Bucknell	W	10-9
F20	at Richmond	L	6-12
F27	Radford	L	3-12
M2	*at The Citadel	L	0-8
M3	*at The Citadel	L	1-8
M4	*at The Citadel	L	2-7
M9	*at UNC Greensboro	L	6-10
M10	*at UNC Greensboro	L	4-13
M11	*at UNC Greensboro	L	9-14
M13	at Virginia Commonwealth	L	0-7
M14	at Norfolk State	W	11-2
M17	Lafayette	W	7-3
M17	Lafayette	W	3-2
M18	Lafayette	W	11-5 (7)
M24	*at Furman	W	5-2
M24	*at Furman	L	4-7
M25	*at Furman	W	6-4
M27	Brown	L	5-10
M28	Brown	W	7-3
A4	at Virginia Tech	L	3-7
A7	*Georgia Southern	L	4-18
A7	*Georgia Southern	L	4-9
A8	*Georgia Southern	L	14-21
A14	*at Appalachian State	L	6-9
A14	*at Appalachian State	W	10-9
A15	*at Appalachian State	L	5-17
A18	at William & Mary	L	1-12 (7)
A21	*Davidson	L	7-8
A22	*Davidson	L	4-17
A22	*Davidson	W	8-2
A24	Richmond	L	4-17
A27	*at College of Charleston	W	6-2
A28	*at College of Charleston	L	1-8
A29	*at College of Charleston	W	7-4
M2	Virginia Commonwealth	L	5-13
M5	*East Tenn. State	L	2-9
M5	*East Tenn. State	L	12-17
M6	*East Tenn. State	W	11-5
M12	*Western Carolina	L	3-5
M12	*Western Carolina	W	15-8
M13	*Western Carolina	L	3-6

%- Played in Tampa, Fla.

*- Denotes Southern Conference Game

2002

10-41, 1-27 SoCon

Home: 8-17; Away: 2-24

Coach Tom Slater

F8	at Samford	L	1-11
F9	at Samford	L	0-2
F9	at Samford	L	7-11
F15	Coppin State	W	10-0
F16	Coppin State	W	6-2
F19	at Richmond	L	1-9
F23	Howard	W	13-0
F23	Howard	W	11-5

F24	Howard	W	17-0
F26	George Mason	L	4-10
M3	Army	W	5-2
M3	Army	W	4-2
M5	Richmond	L	2-10
M8	*at Georgia Southern	L	0-8
M9	*at Georgia Southern	L	1-13
M10	*at Georgia Southern	L	0-9
M13	at Old Dominion	L	7-8
M16	Lafayette	L	2-3
M16	Lafayette	L	2-9
M23	*at Wofford	L	4-5
M24	*at Wofford	L	3-9
M24	*at Wofford	L	6-7
M29	*UNC Greensboro	L	1-5
M30	*UNC Greensboro	L	1-6
A2	at Coppin State	W	28-0
A3	at Radford	L	1-2
A6	*Furman	L	0-12
A6	*Furman	L	6-9
A7	*Furman	L	5-15
A12	*at East Tenn. State	L	3-8
A13	*at East Tenn. State	L	1-17
A14	*at East Tenn. State	L	3-8
A17	at William & Mary	L	1-9
A20	*Appalachian State	L	6-16
A20	*Appalachian State	L	3-4
A24	at Virginia Commonwealth	L	0-5
A25	Norfolk State	W	7-5
A27	*at Davidson	L	2-12
A27	*at Davidson	L	1-10
A28	*at Davidson	L	6-7
M1	at Virginia Tech	L	5-7
M4	*at Western Carolina	L	0-10
M5	*at Western Carolina	L	2-6
M5	*at Western Carolina	W	7-4
M11	*College of Charleston	L	0-11
M11	*College of Charleston	L	7-9
M12	*College of Charleston	L	5-15
M15	at George Mason	L	5-15
M17	*The Citadel	L	2-12
M17	*The Citadel	L	4-12
M18	*The Citadel	L	5-11

*-Denotes Southern Conference Game

2003

25-27, 16-14 SoCon

Home: 15-5 Away: 8-20 Neutral: 2-2

Coach: Tom Slater

J31	%at Florida State	L	4-12
F1	%at Florida State	L	1-5
F2	at Florida State	L	3-10
F8	at Samford	L	1-2
F8	at Samford	L	1-3
F9	at Samford	W	4-3
F21	at Norfolk State	W	5-0
M4	Radford	L###	1-2
M5	at Richmond	L	8-9
M7	*Davidson	W	6-1
M8	*Davidson	W	7-2
M9	*Davidson	W	9-7
M11	at Elon	L	4-5
M12	at N.C. State	L	4-9
M14	*at East Tenn. State	L	1-2
M15	*at East Tenn. State	W	3-1
M16	*at East Tenn. State	L	0-7
M18	Marist	W	8-4
M22	*Furman	L	1-7
M22	*Furman	W	8-5
M23	*Furman	W	4-3
M26	William & Mary	L	2-13
M28	*at Georgia Southern	L	0-2
M29	*at Georgia Southern	L	6-13
M30	*at Georgia Southern	L	2-3
A2	at Radford	W	11-6
A4	*UNC Greensboro	W	11-4
A5	*UNC Greensboro	L	3-8
A6	*UNC Greensboro	W	7-5
A12	Coppin State	W	16-6
A12	Coppin State	W	15-8
A15	at Virginia Tech	L	4-6
A18	*at Western Carolina	L	3-16
A19	*at Western Carolina	L	7-11
A20	*at Western Carolina	L	9-14
A22	at Virginia Commonwealth	L	0-1

A26	*Wofford	W	5-3
A26	*Wofford	L	5-11
A27	*Wofford	W	10-0
M3	*at Appalachian State	W	6-4
M3	*at Appalachian State	W	10-8
M4	*at Appalachian State	W	11-1
M10	*College of Charleston	L	6-18
M11	*College of Charleston	W	6-5
M12	*College of Charleston	W	5-3
M17	*at The Citadel	L	0-10
M17	*at The Citadel	W	7-6
M18	*at The Citadel	L	1-5
M21	^vs. Georgia Southern	L	4-6
M22	^vs. The Citadel	W	2-1
M23	^vs. Furman	W	2-1
M24	^vs. UNC Greensboro	L	1-10

###-Game Later Forfeited

%-Played in Tampa, Fla.

*-Denotes Southern Conference Game

^-Denotes Southern Conference Tournament

Game-Charleston, S.C.

2004

23-32, 4-20 Big South

Home: 18-12 Away: 5-20

Coach: Marlin Ikenberry

J31	at Florida State	L	7-8
F2	at Florida State	L	1-8
F7	at Mercer	L	0-4
F7	at Mercer	W	12-4
F8	at Mercer	W	6-0
F13	at Stetson	L	1-4
F15	at Stetson	W	19-13
F15	at Stetson	L	7-8
F20	Coppin State	W	17-2
F21	Coppin State	W	15-5
F22	Coppin State	W	16-3
F28	Lafayette	W	4-3
F28	Lafayette	W	7-6
F29	Lafayette	W	9-5
M3	at Richmond	L	3-6
M5	Norfolk State	W	9-4
M6	Norfolk State	W	7-6
M7	Norfolk State	W	9-8
M12	Binghamton	L	2-11
M13	Binghamton	W	6-2
M14	Binghamton	W	6-2
M17	Richmond	W	3-1
M19	*at Birmingham-Southern	L	4-6
M20	*at Birmingham-Southern	L	2-6
M21	*at Birmingham-Southern	L	3-6
M23	at Old Dominion	L	2-4
M27	Brown	W	12-7
M28	Brown	W	10-9
M28	Brown	L	3-7
M29	Brown	W	10-5
A2	*Radford	L	4-15
A3	*Radford	L	9-13
A4	*Radford	L	4-9
A9	*Coastal Carolina	L	5-8
A10	*Coastal Carolina	L	7-9
A10	*Coastal Carolina	W	4-3
A16	*at UNC Asheville	L	3-11
A17	*at UNC Asheville	L	5-6
A18	*at UNC Asheville	W	7-6
A20	at Virginia Commonwealth	L	4-5
A21	William & Mary	W	6-5
A23	*Winthrop	L	3-14
A24	*Winthrop	W	5-1
A25	*Winthrop	L	1-2
A28	at Virginia Tech	L	0-8
A30	*Charleston Southern	L	1-4
M1	*Charleston Southern	L	6-7
M2	*Charleston Southern	L	6-7
M8	*at High Point	L	4-14
M9	*at High Point	L	2-11
M10	*at High Point	W	10-2
M19	at William & Mary	L	8-13
M22	*at Liberty	L	4-8
M22	*at Liberty	L	4-10
M23	*at Liberty	L	6-7

*-Denotes Big South Conference Game

2005

27-28, 11-13 Big South

Home: 19-8 Away: 8-18 Neutral: 0-2

Coach: Marlin Ikenberry

F4	at Florida State	L	2-8
F5	at Florida State	L	5-6
F6	at Florida State	L	0-15
F12	Hofstra	W	9-8
F12	Hofstra	L	4-5
F13	Hofstra	L	4-21
F18	at Vanderbilt	L	3-4
F19	at Vanderbilt	L	2-5
F23	at Richmond	W	17-7
F26	Coppin State	W	7-6
F26	Coppin State	W	5-4
F27	Coppin State	W	16-6
M6	Navy	W	4-0
M6	Navy	W	18-5
M7	Fairfield	W	20-2
M11	at Auburn	L	4-5
M12	at Auburn	L	0-12
M13	at Auburn	L	3-4
M16	Norfolk State	W	8-3
M18	*UNC Asheville	W	23-0
M19	*UNC Asheville	W	8-7
M20	*UNC Asheville	L	9-13
M22	at Norfolk State	W	7-4
M25	*at #21 Coastal Carolina	L	3-4
M26	*at #21 Coastal Carolina	W	3-2
M26	*at #21 Coastal Carolina	L	1-3
M30	at Virginia	L	1-2
A1	*Birmingham-Southern	L	1-4
A2	*Birmingham-Southern	L	5-6
A3	*Birmingham-Southern	L	3-15
A5	William & Mary	W	8-6
A8	Longwood	W	11-4
A9	Longwood	W	9-1
A10	Longwood	W	9-8
A15	*at Charleston Southern	W	4-1
A16	*at Charleston Southern	W	7-2
A16	*at Charleston Southern	L	0-2
A20	at William & Mary	L	6-12
A23	*at Winthrop	L	0-3
A23	*at Winthrop	L	1-6
A24	*at Winthrop	L	2-5
A27	at Virginia Tech	W	6-2
A30	*Liberty	L	5-9
M1	*Liberty	L	3-12
M1	*Liberty	W	11-9
M11	at Old Dominion	L	2-9
M13	*High Point	W	10-7
M14	*High Point	W	9-2
M15	*High Point	W	5-4
M17	Georgetown	W	16-7
M20	*at Radford	W	6-0
M21	*at Radford	W	5-4
M22	*at Radford	L	5-6
M25	%vs. Winthrop	L	1-11
M26	%vs. Radford	L	7-8

*-Denotes Big South Conference Game

%-Denotes Big South Tournament Game- Conway, S.C.

2006

30-25, 9-15 Big South

Home: 24-8 Away: 6-17

Coach: Marlin Ikenberry

F3	at Auburn	L	0-7
F4	at Auburn	W	8-5
F5	at Auburn	W	10-8
F10	at Mercer	L	5-11
F11	at Mercer	L	4-9
F12	at Mercer	W	5-4
F17	Coppin State	W	21-4
F19	Coppin State	W	10-8
F25	Lafayette	W	7-6
F25	Lafayette	W	5-4
F26	Lafayette	W	8-7
F28	at Richmond	W	6-0
M3	Albany	W	14-2
M4	Albany	W	8-3
M5	Albany	L	13-14
M8	Longwood	W	10-3
M11	Hartford	W	6-5
M11	Hartford	L	6-7
M12	Hartford	W	7-4
M15	Niagara	W	7-3
M17	*Charleston Southern	W	16-1
M18	*Charleston Southern	L	2-3 (10)
M19	*Charleston Southern	W	10-7
M22	Norfolk State	W	3-2 (10)
M26	Brown	W	7-6
M27	Brown	W	7-6
M31	*at Liberty	L	5-8
A1	*at Liberty	L	8-16
A2	*at Liberty	L	7-9
A5	at Virginia Tech	L	8-9
A7	*at High Point	L	1-5
A8	*at High Point	L	5-6
A9	*at High Point	W	9-2
A12	Richmond	W	15-9
A14	*Radford	W	14-6
A15	*Radford	W	11-4
A15	*Radford	L	7-12
A18	at Virginia	L	0-5
A22	*at Birmingham-Southern	W	13-1
A23	*at Birmingham-Southern	L	2-5
A24	*at Birmingham-Southern	L	3-7
A28	*at UNC Asheville	L	0-9
A29	*at UNC Asheville	L	4-10
A30	*at UNC Asheville	L	5-6
M6	*Coastal Carolina	W	8-2
M8	*Coastal Carolina	L	4-6 (10)
M8	*Coastal Carolina	L	0-2
M10	at Virginia Commonwealth	L	6-8
M12	North Carolina A&T	L	3-6
M13	North Carolina A&T	W	5-4
M13	North Carolina A&T	W	5-0
M17	at James Madison	L	1-2
M19	*#16 Winthrop	L	5-10
M20	*#16 Winthrop	W	10-4
M21	*#16 Winthrop	W	7-3

*-Denotes Big South Conference Game



The 2005 squad broke the school record for wins with 27 and earned a berth into the Big South Conference Championship, the program's first since joining the League.